

Ilex hainanensis Merr targets ITGAV to suppress the proliferation and metastasis of osteosarcoma cells

This article was published in the following Dove Press journal:
OncoTargets and Therapy

Yi Pei¹
YueYan Zhang²
Ke Zheng¹
GuanNing Shang¹
YuMing Wang¹
Wei Wang¹
EnDuo Qiu¹
ShengLong Li¹
Fei Liu¹
XiaoJing Zhang¹

¹Department of Bone and Soft Tissue Surgery, Cancer Hospital of China Medical University, Liaoning Cancer Hospital & Institute, Shenyang, 110042, People's Republic of China; ²Clinical Pathology, Cancer Hospital of China Medical University, Liaoning Cancer Hospital & Institute, Shenyang, 110042, People's Republic of China

Correspondence: XiaoJing Zhang
Department of Bone and Soft Tissue Surgery, Cancer Hospital of China Medical University, Liaoning Cancer Hospital & Institute, Shenyang 110042, People's Republic of China
Tel +86 24 3191 6813
Email cmu_inzl_zhangxj@126.com

Background: Osteosarcoma (OS) is the most common primary malignant bone tumor. Hence, there is an urgent need to identify effective and safe therapeutic agents against OS. It has been reported that *Ilex hainanensis* Merr (IME) possesses antitumor properties. Integrin subunit alpha V (ITGAV) is important for the diagnosis, treatment, and prognosis of tumors.

Purpose: The objective of this study was to whether IME can play a role in the treatment of osteosarcoma by regulating ITGAV.

Methods: Western blot and real-time PCR were used to detect the expression of ITGAV in non-tumorous tissues, osteosarcoma tissues, and metastatic tumors. The expression of ITGAV in MG63, U2OS, and hFOB1. A total of 19 cells was determined through Western blotting and real-time PCR. The expression of ITGAV in OS cells treated with different concentrations of DDP was determined through Western blotting. After transfecting with control or si-ITGAV, and subsequently treated with control or 5 µmol/L DDP, MTT assay and transwell assay were used to detect the proliferation and migration of cells. Western blot was used to detect the expression of ITGAV in cells treated with different concentrations of IME and MTT assay and transwell assay were used to detect the proliferation and migration of cells. MG63 and U2OS cells were treated with control, 5 µmol/L DDP, 25 µmol/L IME, or 5 µmol/L DDP combined with 25 µmol/L IME, the expression of ITGAV was determined through Western blotting and real-time PCR. MTT assay and transwell assay were used to detect the proliferation and migration of cells. Inhibitory effect of IME on lung metastasis of osteosarcoma in vivo.

Results: ITGAV was highly expressed in tumors, with the highest expression found in metastatic tumors and higher in OS cells. A low concentration of DDP (5 µmol/L) inhibited the expression of ITGAV. However, ITGAV may be related to the development of resistance to DDP. Silencing of ITGAV downregulates the proliferation and migration of OS cells as the effect of low-concentration DDP (5 µmol/L). IME inhibited the proliferation and migration of MG63 and U2OS cells in a concentration-dependent manner and decreased the expression of ITGAV. MTT and Transwell assays showed that 25 µmol/L IME and 5 µmol/L DDP exhibited similar inhibitory effects on the proliferation and migration of OS cells. The combination of IME with DDP resulted in the amplification of these inhibitory effects. Both DDP and IME downregulated the expression of ITGAV, and the inhibition of ITGAV was amplified by the combination of IME with DDP. In-vivo studies have shown that IME and DDP, independently or in combination, may significantly inhibit the metastasis of OS to the lungs.

Conclusion: IME may reduce the resistance of OS cells to DDP to some extent.

Keywords: *Ilex hainanensis* Merr, osteosarcoma, integrin subunit alpha V, cisplatin

Introduction

Osteosarcoma (OS) is the most common primary malignant bone tumor, mainly occurring in children and adolescents. The combination of surgical resection with intensive chemotherapy has improved the 5-year overall survival rate. However, due to its low efficacy, chemotherapy is associated with the development of adverse effects and multidrug resistance.^{1,2} Therefore, there is an urgent need to identify new effective and safe therapeutic agents against OS.³

The ethanol extract of *Ilex hainanensis* Merr (IME) is obtained from the leaves of IME, which belongs to the family *Aquifoliaceae*. Recently, studies demonstrated that IME possesses excellent lipid modification and anti-inflammatory properties.⁴ It has also been reported that IME can inhibit the occurrence and development of melanoma.⁵

Integrin subunit alpha V (ITGAV) belongs to the integrin subunit alpha family. Studies showed that ITGAV plays an important role in angiogenesis and metastasis of tumors.⁶ It binds to extracellular ligands, promoting the secretion and activation of matrix metalloproteinases. This results in the activation and migration of vascular endothelial cells through a series of cascade reactions. ITGAV inhibits the apoptosis of endothelial cells and induces angiogenesis by synergistically interacting with the basic fibroblast growth factor and vascular endothelial growth factor. A study has implied that the level of ITGAV expression is important for the diagnosis, treatment, and prognosis of tumors.⁷ The expression of ITGAV is closely related to the progression of colon cancer and the degree of malignancy of glioma. In addition, it is associated with the differentiation of squamous cell carcinomas of the larynx and hypopharynx and their metastases to the lymph nodes.⁸ Overexpression of ITGAV in patients with cancer often indicates poor prognosis. Researchers showed that the expression of ITGAV is closely associated with the degree of malignancy and clinical stage of OS.⁹

This study analyzed the effect of ITGAV on DDP-resistant osteosarcoma cells, hoping to find a better treatment for osteosarcoma.

Materials and methods

Materials

IME (Figure 1A), DDP, MTT, and Trypan Blue were purchased from Bioss Biotechnology (Beijing, China). FBS and RPMI-1640 medium were obtained from Gibco (Thermo Fisher Scientific Inc., Waltham, MA, USA). Lipofectamine 2000 and TRIzol were obtained from Invitrogen (Invitrogen,

Carlsbad, CA, USA). The RT reaction kit and SYBR Premix Ex Taq were obtained from TaKaRa (Kusatsu, Japan). The anti-ITGAV and anti-glyceraldehyde-3-phosphate dehydrogenase (anti-GAPDH) antibodies were purchased from Santa Cruz (Santa Cruz, CA, USA). The horseradish peroxidase-conjugated secondary antibody, bicinchoninic acid protein assay kit, and enhanced chemiluminescence solution were purchased from Beyotime Biotechnology (Shanghai, China).

Samples

Tissue samples were obtained from patients undergoing surgery at Liaoning Cancer Hospital and Institute (Shenyang, China). The original histopathologic reports were obtained for all patients, and the diagnosis of OS was confirmed. Part of the excised tissue was embedded in paraffin, while the remaining sample was snap-frozen at -80°C . All patients provided written informed consent, and the study was approved by the Ethics Committee of the Academic Medical Center (Shenyang, China).

Cell culture

MG63, U2OS, and hFOB1.19 cells were obtained from the Cell Bank of Chinese Academy of Sciences (Beijing, China) and cultured in RPMI-1640 medium with 10% FBS in a humidified atmosphere at 37°C under an atmosphere of 5% CO_2 .

Cell viability assay

Cells (1×10^4 /well) were plated in 96-well plates; 12 hrs later, the medium was removed and the cells were treated with IME for 12, 24, 36, and 48 hrs. At the end of the treatment, the capability of cellular proliferation was measured using the MTT assay. For this purpose, 0.01 mL of MTT solution (5 mg/mL in PBS) was added to each well. After 4 hrs of incubation at 37°C , the medium was replaced by 0.15 mL dimethyl sulfoxide. After 15 mins of incubation at 37°C , the optical density was measured at 490 nm using a Microplate Reader (BIO-RAD, Beijing, China).

Transwell assay

Transwell assays were performed using modified Boyden chambers with polycarbonate nucleopore membranes. Following treatment with IME for 24 hrs, 1×10^5 cells in 100 μL FBS-free DMEM were placed in the upper part of each chamber, whereas the lower compartment was filled

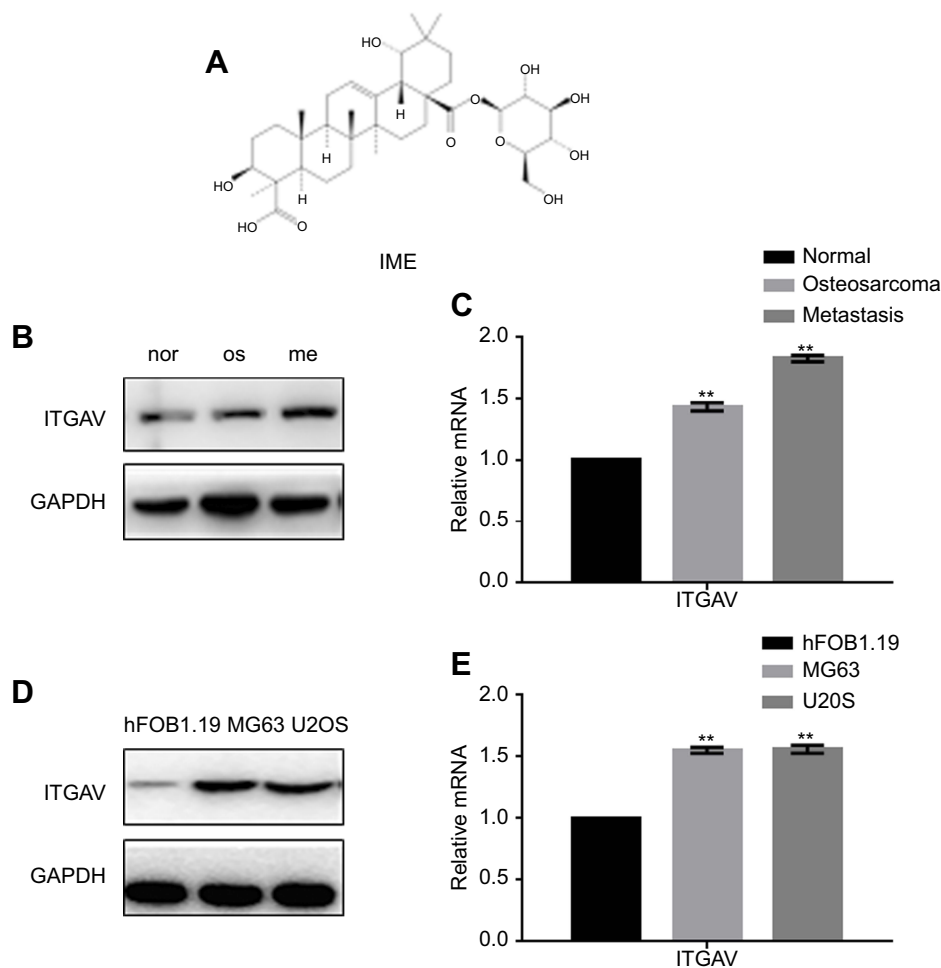


Figure 1 The expression of ITGAV in osteosarcoma. **(A)** The structure of IME. **(B, C)** The expression of ITGAV in nontumorous tissues, osteosarcoma tissues, and metastatic tumors obtained from patients with osteosarcoma was determined through Western blotting and real-time PCR. $**P < 0.05$, vs adjacent normal tissues. **(D, E)** The expression of ITGAV in MG63, U2OS, and hFOB1.19 cells was determined through Western blotting and real-time PCR. $**P < 0.05$, vs hFOB1.19 cells.

Abbreviations: IME, *Ilex hainanensis* Merr; ITGAV, integrin subunit alpha V; nor, non-tumorous tissues; os, osteosarcoma tissues; me, metastatic tumors.

with 600 μ L of RPMI-1640 containing 10% FBS. After incubation for 8 hrs at 37°C, the invading cells on the lower surface of the filter were fixed, stained using Trypan Blue, and counted under high-power magnification.

Transfection

Cells were transfected with vector/ITGAV or pRS-si-NC (negative control)/pRS-siITGAV (Shanghai GeneChem Company, Shanghai, China) to stably overexpress or silence ITGAV and were subsequently selected using puromycin (1.5 μ g/mL). Lipofectamine 2000 was used for cell transfection according to the protocol provided by the manufacturer.

Real-time polymerase chain reaction (PCR)

Following treatment for 24 hrs, total RNA was extracted using TRIzol according to the protocol provided by the

manufacturer. Total RNA (1 μ g) was reverse transcribed to cDNA in a total volume of 20 μ L using an RT reaction kit. Real-time PCR was performed using an Mx 3000P real-time PCR system (Applied Biosystems, Foster City, CA, USA) and SYBR Premix Ex Taq. PCR was carried out for 40 cycles at 95°C for 10 s and 60°C for 30 s. The primer sequences used for the detection of mRNA expression are shown in Table 1. All reactions were performed at least in triplicate. The levels of gene expression, relative to GAPDH, were calculated using the Stratagene Mx 3000P software.

Western blotting analysis

Following treatment, cells and tissues were lysed using lysis solution at 4°C for 30 mins. An equal amount of supernatant obtained from each sample was resolved in 10% SDS-PAGE, and the proteins were transferred onto

Table 1 The primers used for the detection of mRNA expression

Name	Forward primer(5'→3')	Reverse primer(5'→3')
ITGAV	GTTTCAGTGTGCACCAGCAG	AAGGCCACTGAAGATGGAGC
GAPDH	GAAGGCTGGGGCTCATTTG	AGGGGCCATCCACAGTCTTC

Abbreviation: ITGAV, integrin subunit alpha V.

polyvinylidene difluoride membranes. The membrane (Amersham) was blocked with 5% non-fat dry milk in Tris-buffered saline and Tween 20 for 1 hr at room temperature, and the proteins were probed with specific antibodies against ITGAV and GAPDH. The gels were stripped and reprobed with antibodies against GAPDH to ensure equal loading. The proteins on polyvinylidene difluoride membranes were detected through enhanced chemiluminescence.

Effect of IME in vivo

Tumors were established via intravenous injection of MG63 cells (1×10^5 cells/animal) into the tail of 3- to 4-week-old female BALB/c (nu/nu) mice (Beijing, China). The mice were housed under standard conditions with a 12-hr light/dark cycle and had ad libitum access to water and food. Each mouse in the IME and DDP groups received 100 μ L of IME (5 mg/kg, diluted with PBS) or DDP (8 mg/kg, diluted with PBS), respectively, every 2 days through tail vein injection. Each mouse in the IME+DDP group received 100 μ L of IME+DDP (5 mg/kg IME+8 mg/kg DDP, diluted with PBS) in the same manner. Finally, the control mice were injected with 100 μ L of PBS. After 21 days, the mice were sacrificed, and all lungs were dissected and fixed in formalin. The investigation conformed to the Guide for the Care and Use of Laboratory Animals established by the US National Institutes of Health (NIH Publication No. 85–23, revised 1996). The Animal Research Committee at Liaoning Cancer Hospital approved all animal studies, and animal care was provided in accordance with institutional guidelines.

H&E stain

Tissues were blocked in 10% formalin and embedded in paraffin. The paraffin-embedded tissues were cut into sections (thickness: 3 μ m), and these sections were de-waxed in xylene and rehydrated using a graded alcohol series. Finally, the sections were counterstained with H&E.

Statistical analysis

All data are presented as the mean \pm SE of the mean. Statistical significance between the two groups was

evaluated via the Student's *t*-test (two-tailed) using the GraphPad Prism (GraphPad, Inc., La Jolla, CA, USA) software. A *P*<0.05 denoted statistical significance.

Results

Expression of ITGAV in OS

We examined the expression of ITGAV in nontumorous tissues, OS tissues, and metastatic tumors obtained from patients with OS. Western blotting and real-time PCR analyses showed that ITGAV was highly expressed in tumors, with the highest expression found in metastatic tumors (Figure 1B, C). The results showed that the expression of ITGAV was markedly higher in MG63 and U2OS cells versus hFOB1.19 cells (Figure 1D, E).

ITGAV is involved in the development of resistance to DDP

We used different concentrations of DDP to treat MG63 and U2OS cells. The results of the Western blotting and real-time PCR analyses showed that a low concentration of DDP (5 μ mol/L) inhibited the expression of ITGAV. However, an increase in the concentration of DDP (ie, 10 μ mol/L and 15 μ mol/L) was associated with an increase in the level of ITGAV. This finding indicates that ITGAV may be related to the development of resistance to DDP (Figure 2A, B). In addition, we found that silencing of ITGAV downregulates the proliferation of OS cells. Notably, low-concentration DDP (5 μ mol/L) inhibits the proliferation of OS cells. Following the silencing of ITGAV, the inhibitory effect of DDP on the proliferation of OS cells was amplified (Figure 2C). The Transwell experiment demonstrated that low-concentration DDP (5 μ mol/L) amplifies the decrease in cell migration induced by silencing of ITGAV (Figure 2D, E).

IME inhibits the proliferation and migration of OS cells

The results of the MTT assay showed that IME inhibited the proliferation of MG63 and U2OS cells in a concentration-dependent manner. However, the

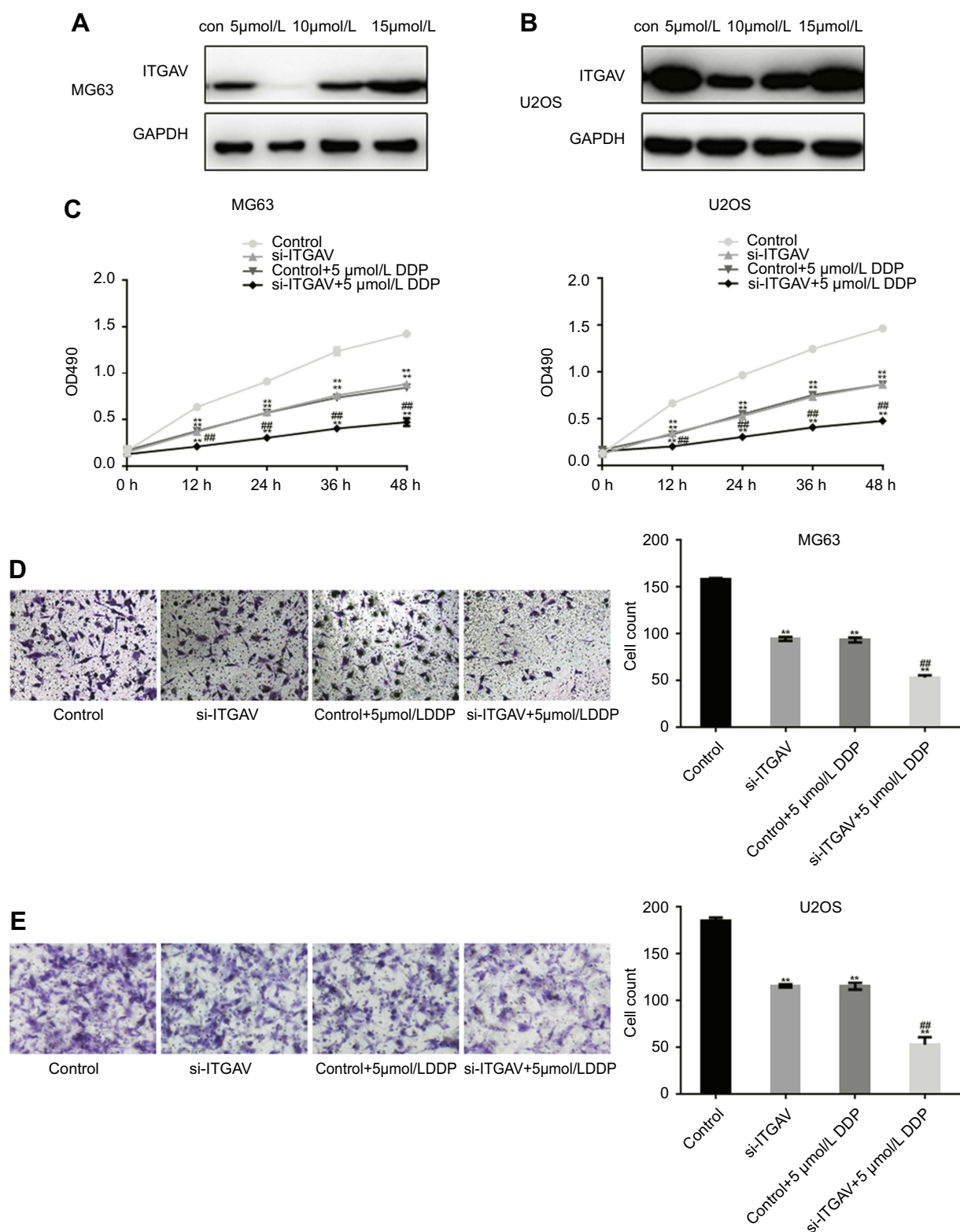


Figure 2 ITGAV is involved in the development of resistance to DDP in osteosarcoma. **(A, B)** The expression of ITGAV in MG63 and U2OS cells treated with different concentrations of DDP was determined through Western blotting. **(C)** MG63 and U2OS cells were transfected with control or si-ITGAV and subsequently treated with control or 5 μmol/L DDP. MTT assay was performed, and the results represent the mean ± SD of three independent experiments. ** $P < 0.05$, vs control. ## $P < 0.05$, vs si-ITGAV. **(D, E)** MG63 and U2OS cells were transfected with control or si-ITGAV, and subsequently treated with control or 5 μmol/L DDP. The migration of MG63 and U2OS cells was determined using the Transwell assay. The cells were counted, and the results represent the mean ± SD of three independent experiments. ** $P < 0.05$, vs control. ## $P < 0.05$, vs si-ITGAV.

Abbreviations: DDP, cisplatin; ITGAV, integrin subunit alpha V.

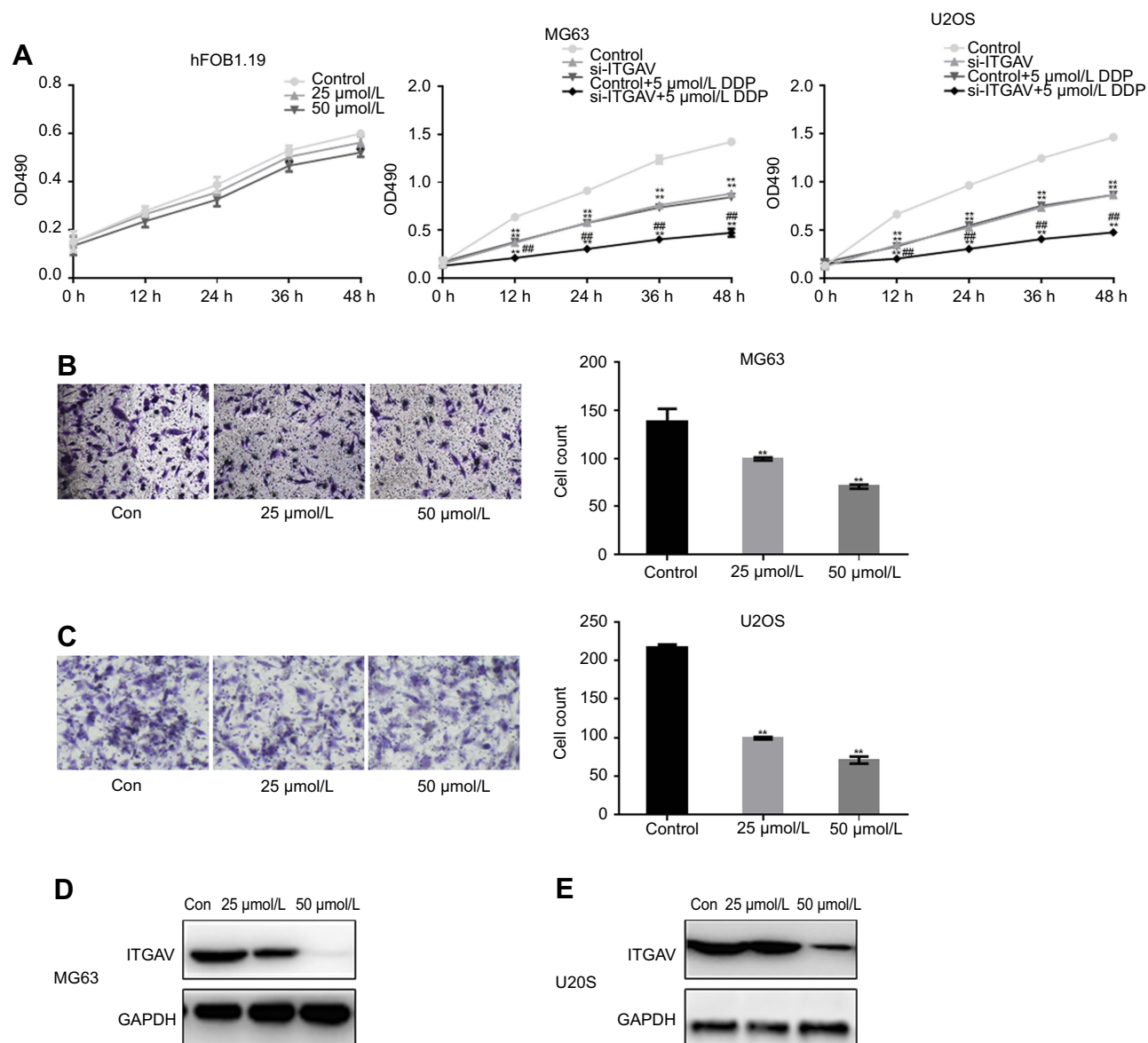


Figure 3 IME inhibits the proliferation and migration of osteosarcoma cells. **(A)** hFOB1.19, MG63, and U2OS cells were treated with different concentrations of IME. MTT assay was performed, and the results represent the mean \pm SD of three independent experiments. $^{**}P < 0.05$, vs control. $^{***}P < 0.05$, vs 5 $\mu\text{mol/L}$ DDP. **(B, C)** MG63 and U2OS cells were treated with different concentrations of IME. The migration of MG63 and U2OS cells was detected using the Transwell assay. The cells were counted, and the results represent the mean \pm SD of three independent experiments. $^{**}P < 0.05$, vs control. **(D, E)** The expression of ITGAV in MG63 and U2OS cells treated with different concentrations of IME was determined through Western blotting.

Abbreviations: IME, *Ilex hainanensis* Merr; ITGAV, integrin subunit alpha V.

inhibitory effect on the proliferation of hFOB1.19 cells was limited (Figure 3A). The IC_{50} of IME in MG63 and U2OS cells after 24 hrs was approximately 48.96 $\mu\text{mol/L}$ and 53.69 $\mu\text{mol/L}$, respectively (Table 2).

The Transwell assay showed that IME significantly decreased the migration of MG63 and U2OS cells in a dose-dependent manner (Figure 3B, C). Western blotting

Table 2 The IC_{50} of IME in MG63 and U2OS cells

Group	IME ($\mu\text{mol/L}$)		DDP ($\mu\text{mol/L}$)	
	24 hrs	48 hrs	24 hrs	48 hrs
MG63	48.96	23.37	13.76	5.97
U2OS	53.69	28.99	15.92	6.48

Abbreviations: IME, *Ilex hainanensis* Merr; DDP, cisplatin.

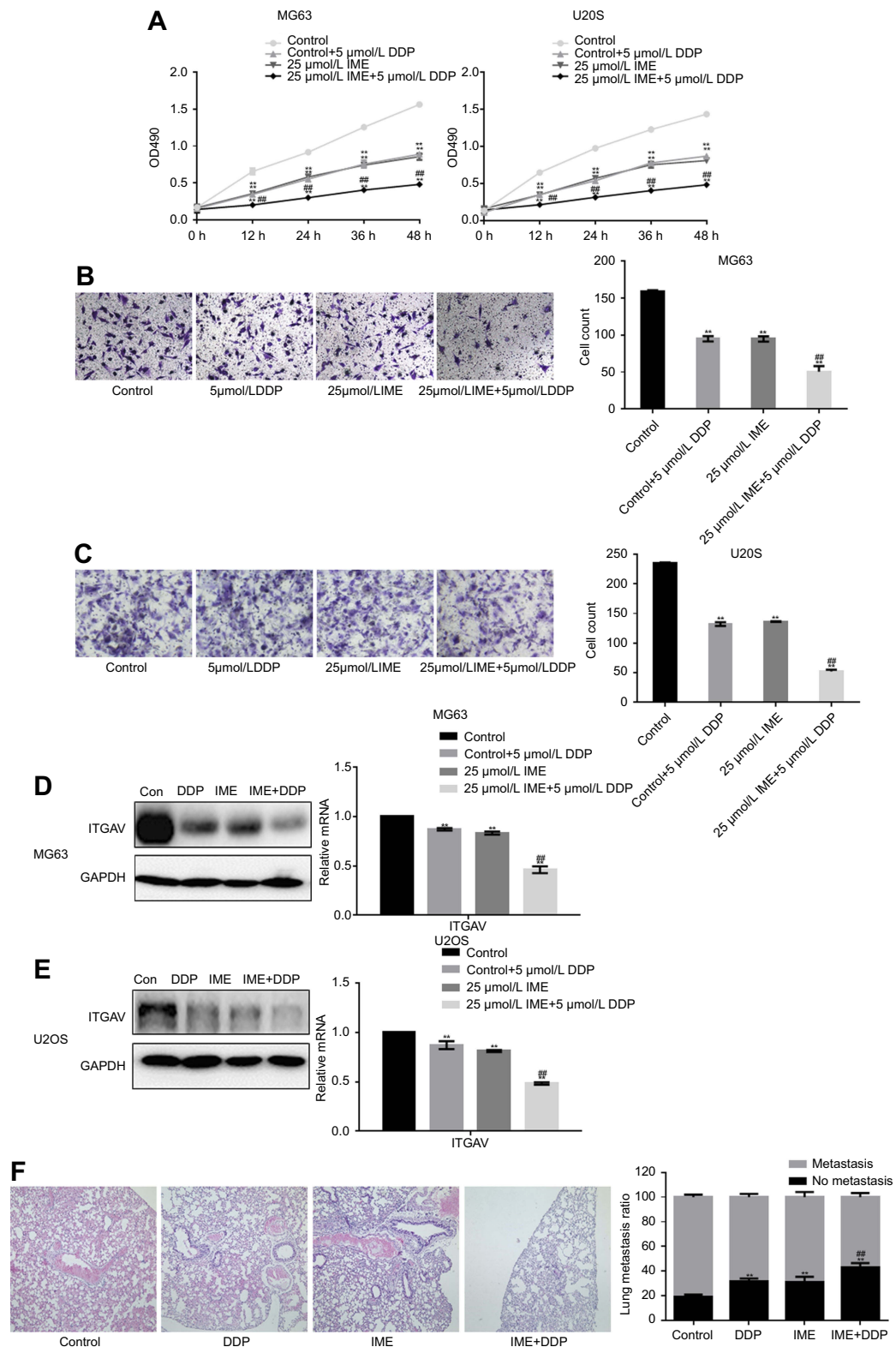


Figure 4 IME enhances the inhibitory effect of DDP on osteosarcoma cells. **(A)** MG63 and U2OS cells were treated with control, 5 $\mu\text{mol/L}$ DDP, 25 $\mu\text{mol/L}$ IME, or 5 $\mu\text{mol/L}$ DDP combined with 25 $\mu\text{mol/L}$ IME. MTT assay was performed, and the results represent the mean \pm SD of three independent experiments. $**P < 0.05$, vs control. $###P < 0.05$, vs 5 $\mu\text{mol/L}$ DDP. **(B, C)** MG63 and U2OS cells were treated with control, 5 $\mu\text{mol/L}$ DDP, 25 $\mu\text{mol/L}$ IME, or 5 $\mu\text{mol/L}$ DDP combined with 25 $\mu\text{mol/L}$ IME. The migration of MG63 and U2OS cells was detected using the Transwell assay. The cells were counted, and the results represent the mean \pm SD of three independent experiments. $**P < 0.05$, vs control. $###P < 0.05$, vs 5 $\mu\text{mol/L}$ DDP. **(D, E)** MG63 and U2OS cells were treated with control, 5 $\mu\text{mol/L}$ DDP, 25 $\mu\text{mol/L}$ IME, or 5 $\mu\text{mol/L}$ DDP combined with 25 $\mu\text{mol/L}$ IME. The expression of ITGA V in MG63 and U2OS cells was determined through Western blotting and real-time PCR. $**P < 0.05$, vs control. $###P < 0.05$, vs 5 $\mu\text{mol/L}$ DDP. **(F)** The metastasis of osteosarcoma after treatment with control, DDP, IME, or DDP combined with IME. $**P < 0.05$, vs control. $###P < 0.05$, vs DDP.

Abbreviations: IME, *Ilex hainanensis* Merr; DDP, cisplatin; ITGA V, integrin subunit alpha V.

and real-time PCR showed that, after exposure to IME for 24 hrs, the expression of ITGAV was drastically decreased (Figure 3D, E).

IME enhances the inhibitory effect of DDP on OS cells

The results of the MTT and Transwell assays showed that 25 $\mu\text{mol/L}$ IME and 5 $\mu\text{mol/L}$ DDP exhibited similar inhibitory effects on the proliferation and migration of OS cells. Moreover, the combination of IME with DDP resulted in the amplification of these inhibitory effects (Figure 4A–C). Western blotting and real-time PCR showed that both DDP and IME downregulated the expression of ITGAV, and the inhibition of ITGAV was amplified by the combination of IME with DDP (Figure 4D, E). In vivo studies have shown that IME and DDP, independently or in combination, may significantly inhibit the metastasis of OS to the lungs (Figure 4F).

Discussion

The overall treatment effects and long-term disease-free survival rate in patients with OS remain unsatisfactory. Therefore, further study of the genes involved in the development of OS is warranted to determine the occurrence, evolution, prognosis, and appropriate treatment of this disease.^{10,11} Active ingredients extracted from natural plants and Chinese medicines have attracted considerable attention as potential anticancer agents, owing to the following advantages: multicomponent, multiboot effect, high biological activity, favorable safety profile, and less drug resistance.¹² Paclitaxel, camptothecin, vincristine, and their derivatives from plants have been widely used in clinical practice as first-line antineoplastic drugs.¹³ In addition, curcumin, bark hormone, oridonin, matrine, and oleanolic acid have shown strong antitumor activity in preclinical studies.¹⁴ Moreover, studies have demonstrated that IME exhibited significant antimelanoma activity in vitro and in vivo.¹⁵

The expression of ITGAV decreased in OS tissues sensitive to chemotherapy. Conversely, the expression of ITGAV did not decrease in tissues which were not sensitive to chemotherapy.¹⁶ These data indicate that the expression of ITGAV may serve as a predictor of the degree of malignancy and an indicator of the effect of chemotherapy in OS.¹⁶ This study indicates that ITGAV is highly expressed in OS and metastatic OS tissues. The expression of ITGAV in metastatic OS tissues was higher than that reported in primary OS tissues. The results showed that the expression of ITGAV

was correlated with the occurrence and development of OS. Researchers found that the expression of ITGAV in OS cells was upregulated after treatment with a high concentration of DDP, suggesting the involvement of ITGAV in the development of resistance to DDP. Subsequent data indicated that the inhibition of OS cell proliferation and migration by DDP was significantly enhanced after silencing ITGAV.

Following the treatment of OS cells with different concentrations of IME, we found that IME inhibited the proliferation and migration of OS cells in a dose-dependent manner. In addition, IME downregulated the expression of ITGAV in OS cells. Subsequently, we combined IME and DDP to examine the effect on the proliferation and migration of OS cells. The results showed that the combination of IME with DDP significantly inhibited the proliferation and migration of OS cells. This finding indicates that IME may promote the therapeutic effect of DDP on OS and treat DDP-resistant OS to a certain extent.

In summary, our data showed that ITGAV may be involved in the development of resistance to DDP in OS. IME can significantly inhibit the proliferation and migration of OS cells by blocking the expression of ITGAV. The combination of IME with DDP can reduce – to a certain extent – the resistance of OS to DDP, and this effect may be achieved through the inhibition of ITGAV expression.

Ethical approval and informed consent

All patients provided written consent and approval for the use of clinical materials for research purposes, according to the institutional regulations, at the Department of Bone and Soft Tissue Surgery of Liaoning Cancer Hospital.

Consent for publication

We have obtained consent from the patients for the publication of individual patient data.

Disclosure

The authors report no conflicts of interest in this work.

References

1. Wang N, Meng X, Liu Y, Chen Y, Liang Q. LPS promote osteosarcoma invasion and migration through TLR4/HOTAIR. *Gene*. 2019;680:1–8. doi:10.1016/j.gene.2018.09.031
2. Shao YW, Wood GA, Lu J, et al. Cross-species genomics identifies DLG2 as a tumor suppressor in osteosarcoma. *Oncogene*. 2019;38(2):291–298.

3. Fu Y, Zhang L, Hong Z, et al. Methanolic extract of *Pien tze huang* induces apoptosis signaling in human osteosarcoma MG63 cells via multiple pathways. *Molecules*. 2016;21(3):283. doi:10.3390/molecules21030283
4. Yang X, Yang G, Li W, Zhang Y, Wang J. Therapeutic effect of *Ilex hainanensis* Merr. Extract on essential hypertension: a systematic review and meta-analysis of randomized controlled trials. *Front Pharmacol*. 2018;9:424. doi:10.3389/fphar.2018.00424
5. Zhao WW, Zan K, Wu JY, et al. Antibacterial triterpenoids from the leaves of *Ilex hainanensis* Merr. *Nat Prod Res*. 2018;19:1–5.
6. Flum M, Kleemann M, Schneider H, et al. miR-217-5p induces apoptosis by directly targeting PRKCI, BAG3, ITGAV and MAPK1 in colorectal cancer cells. *J Cell Commun Signal*. 2018;12(2):451–466. doi:10.1007/s12079-017-0410-x
7. Linhares MM, Affonso RJ Jr., Viana Lde S, et al. Genetic and immunohistochemical expression of integrins ITGAV, ITGA6, and ITGA3 as prognostic factor for colorectal cancer: models for global and disease-free survival. *PLoS One*. 2015;10(12):e0144333. doi:10.1371/journal.pone.0144333
8. Viana Lde S, Affonso RJ Jr., Silva SR, et al. Relationship between the expression of the extracellular matrix genes SPARC, SPP1, FN1, ITGA5 and ITGAV and clinicopathological parameters of tumor progression and colorectal cancer dissemination. *Oncology*. 2013;84(2):81–91. doi:10.1159/000343436
9. Waisberg J, De Souza Viana L, Affonso Junior RJ, et al. Overexpression of the ITGAV gene is associated with progression and spread of colorectal cancer. *Anticancer Res*. 2014;34(10):5599–5607.
10. Kun-Peng Z, Chun-Lin Z, Xiao-Long M, Lei Z. Fibronectin-1 modulated by the long noncoding RNA OIP5-AS1/miR-200b-3p axis contributes to doxorubicin resistance of osteosarcoma cells. *J Cell Physiol*. 2019;234(5):6927–6939. doi:10.1002/jcp.27435
11. Jie Z, Xie Z, Zhao X, et al. Glabridin inhibits osteosarcoma migration and invasion via blocking the p38- and JNK-mediated CREB-API complexes formation. *J Cell Physiol*. 2019;234(4):4167–4178. doi:10.1002/jcp.27171
12. Wang H, Zhou JW, Fu DH, Zhou Y, Cheng WZ, Liu Z-L. *Gynura procumbens* ethanolic extract suppresses osteosarcoma cell proliferation and metastasis in vitro. *Oncol Lett*. 2013;6(1):113–117. doi:10.3892/ol.2013.1315
13. Yang H, Liu C, Zhang YQ, et al. Ilexgenin A induces B16-F10 melanoma cell G1/S arrest in vitro and reduces tumor growth in vivo. *Int Immunopharmacol*. 2015;24(2):423–431. doi:10.1016/j.intimp.2014.12.040
14. Chang JL, Wang WY, Li YM, et al. Chinese herbal medicine for osteosarcoma in the mouse: a systematic review and meta-analysis. *Chin J Integr Med*. 2018. doi:10.1007/s11655-018-2565-6
15. Zhang YQ, Yang H, Sun WD, et al. Ethanol extract of *Ilex hainanensis* Merr. Exhibits anti-melanoma activity by induction of G1/S cell-cycle arrest and apoptosis. *Chin J Integr Med*. 2018;24(1):47–55. doi:10.1007/s11655-017-2544-8
16. Luo Z, Li D, Luo X, et al. Decreased expression of miR-548c-3p in osteosarcoma contributes to cell proliferation via targeting ITGAV. *Cancer Biother Radiopharm*. 2016;31(5):153–158. doi:10.1089/cbr.2016.1995

OncoTargets and Therapy

Publish your work in this journal

OncoTargets and Therapy is an international, peer-reviewed, open access journal focusing on the pathological basis of all cancers, potential targets for therapy and treatment protocols employed to improve the management of cancer patients. The journal also focuses on the impact of management programs and new therapeutic

agents and protocols on patient perspectives such as quality of life, adherence and satisfaction. The manuscript management system is completely online and includes a very quick and fair peer-review system, which is all easy to use. Visit <http://www.dovepress.com/testimonials.php> to read real quotes from published authors.

Submit your manuscript here: <https://www.dovepress.com/oncotargets-and-therapy-journal>

Dovepress