

TRIM11 promotes proliferation and glycolysis of breast cancer cells via targeting AKT/GLUT1 pathway

This article was published in the following Dove Press journal:
OncoTargets and Therapy

WenBo Song^{1,2}

Zheng Wang³

Xiang Gu²

ALi Wang²

XiaoJun Chen²

Hui Miao⁴

JunFeng Chu²

Ye Tian⁵

¹Department of Radiotherapy and Oncology, The Second Affiliated Hospital of Soochow University, Suzhou 215004, People's Republic of China; ²Department of Radiotherapy, Jiangdu People's Hospital of Yangzhou, Yangzhou 225200, People's Republic of China; ³Clinical Medical College, Yangzhou University, Yangzhou 225200, People's Republic of China; ⁴Department of Radiotherapy, Xuzhou Cancer Hospital, Xuzhou, Jiangsu 221000, People's Republic of China; ⁵Department of Radiotherapy and Oncology, The Second Affiliated Hospital of Soochow University, Suzhou, Jiangsu 215004, People's Republic of China

Background: Tripartite motif-containing protein 11 (TRIM11) is one of the E3 ubiquitin ligases, which is upregulated in several human tumors. Meanwhile, the detailed function of TRIM11 remains unclear in breast cancer cells.

Purpose: The purpose of the present study is to analyze the biological function of TRIM11 and identify its potential signaling pathway in breast cancer cells.

Patients and methods: Thirty five pairs of breast cancer specimens and adjacent-matched noncancerous samples were used to analyse the expression profile of TRIM11. RNA interference was utilized to silence TRIM11 in three breast cancer cell lines (T47D, ZR7530, and BT474) respectively. Meanwhile, overexpression of TRIM11 was induced in one breast cancer cells (MDA-MB-231) by using Lentiviral vector. Moreover, the AKT inhibitor (MK-2206) was used to determine the correlation between TRIM11 and AKT in breast cancer cells.

Results: Our results indicated that TRIM11 was increased in breast cancer tissues. Moreover, TRIM11 was a pro-proliferation regulator in breast cancer cells and participated in the metabolism of glycolysis. Importantly, our results demonstrated that TRIM11 was involved in the AKT/GLUT1 signaling pathway in breast cancer cells.

Conclusion: Present research not only gained a deep understanding of the biological function of TRIM11 but also provided evidences to indicate its possible signaling pathway in breast cancer cells.

Keywords: breast cancer, TRIM11, AKT, GLUT1, HKII

Introduction

Breast cancer is one of the most common malignancies in female all over the world, which is a highly heterogeneous disease.¹ Although early detection and treatment benefit to prognosis, the mortality of breast cancer is still very high.² Currently, the surgical is the major option in the treatment for breast cancer. This treatment not only has negative physical and emotional effects on sufferers but also influences their social activity.³ Hence, enhancing the understanding of the molecule mechanism of breast cancer was urgently needed.

Tripartite motif-containing protein 11 (TRIM11) belongs to the E3 ubiquitin ligase family, which is identified as an oncogene in certain cancers. Previous reports have indicated that TRIM11 promotes the proliferation and invasion of hepatocellular carcinoma cells.^{4,5} Moreover, TRIM11 has accelerated the progression of colon cancer though increasing the proliferation and suppressing the apoptosis.⁶ In addition, TRIM11 has also

Correspondence: JunFeng Chu
Department Radiotherapy, Jiangdu
People's Hospital of Yangzhou,
Dongfanghong Road NO. 9, Yangzhou
225200, People's Republic of China
Email drchujunfeng@126.com

Ye Tian
Department of Radiotherapy and
Oncology, The Second Affiliated Hospital
of Soochow University, San Xiang Road
No. 1055, Suzhou, Jiangsu 215004,
People's Republic of China
Email dryetian@126.com

improved the development and metastasis of lung cancer cells.⁷ However, the precise biological function of TRIM11 remains unclear in breast cancer cells.

It has been confirmed that cancer cells need extra energy to meet the rapid proliferation.⁸ Therefore, the activity of aerobic glycolysis is often elevated in cancer cells.⁹ Glucose transporter 1 (GLUT1) has regulated the metabolism of aerobic glycolysis and is upregulated in cancers. Previous reports have demonstrated that GLUT1 promotes the development and metastasis of breast cancer cells.^{10,11} Therefore, it is vital and valuable to further investigate the molecule network of GLUT1 in breast cancer cells.

The phosphatidylinositol 3-kinase/AKT (PI3K/AKT) signaling pathway plays an important role in the regulation of cell survival and proliferation and closely links to tumorigenesis. Previous reports have demonstrated that the activation of PI3K/AKT signaling pathway promotes the growth and progression of breast cancer.^{12,13} Moreover, the AKT/GLUT1 signaling pathway plays an essential role in the regulation of proliferation and glycolysis in lung cancer cells.¹⁴ However, the biological function of AKT/GLUT1 signaling pathway in breast cancer cells still needed to be further explored.

In this study, we analyzed the function of TRIM11 and identified its potential molecule network in breast cancer cells. TRIM11 was induced silencing and overexpression in breast cancer cells through RNA interference and lentiviral vector, respectively. Our analysis not only gained a deep insight into TRIM11 but also provided evidences in terms to develop a novel approach for the treatment of breast cancer.

Materials and methods

Tissue samples of breast cancer

The number of Thirty five pairs of breast cancer specimens and adjacent-matched noncancerous samples were collected from the Second Affiliated Hospital of Soochow University. Tissues were stored at -80°C after being snap-frozen in liquid nitrogen and used for the following analysis. Our research was approved by the independent ethics committee of the Second Affiliated Hospital of Soochow University and was conducted in accordance with the Declaration of Helsinki. All patients provided written informed consent.

Cell culture

All breast cancer cell lines MDA-MB-231 (ER $-$; PR $-$; Her2 $-$), MCF7 (ER $+$; PR $+$; Her2 $-$), T47D (ER $+$; PR $+$;

Her2 $-$), BT474 (ER $+$; PR $+$; Her2 $+$) and ZR7530 (ER $+$; PR $-$; Her2 $+$) were purchased from cell bank of Shanghai biology institute (Shanghai, China). Cells were planted in DMEM Medium (Trueline, USA) and were cultured in the incubator with the condition of 5% CO₂, at 37°C.

RNA extraction and qRT-PCR

TRIzol Reagent kit (Invitrogen, USA) was used to isolate total RNA from all samples. Then, the complementary DNA (cDNA) was synthesized by the cDNA synthesis kit (Fermentas, Canada) following the manufacturer's introduction. The program of qRT-PCR was set as follows: 95°C for 10 mins followed by 40 cycles of 95°C for 15 s, 60°C for 45 s and normalized to GAPDH. $2^{-\Delta\Delta\text{Ct}}$ method was used to calculate the gene relative expression. Three replicates were needed for every data. Primer sequences were presented in the Supplementary material.

Silencing and overexpression of TRIM11

Lentiviral plasmids (pLKO.1) containing three short interfering RNAs (siRNA) targeted to various regions of human TRIM11 (NM_145214.2) and a non-specific siRNA (siNC) were synthesized (Major, Shanghai, China). Meanwhile, pLVX-puro vector contained the full length of human TRIM11 cDNA sequence and the mock plasmid (oeNC) were transiently transfected in breast cancer cells respectively by Lipofectamine 2000 (Invitrogen, USA). Analyses were established at 48 hrs after being transfected. The sequences information of siTRIM11s was listed in Table S1.

Western blot

Total protein lysates were isolated from indicated samples by using RIPA lysis buffer (JRDUN, Shanghai, China). BCA protein assay kit (Thermo Fisher, USA) was used to quantify the protein concentration. The protein was fractionated on 10% SDS-PAGE, after that, transferred the gel to a nitrocellulose membrane (Millipore, USA) for 12 hrs. Then, the membrane was blocked with nonfat dry milk (5%) at room temperature for 60 mins. Next, the membranes were probed with the primary antibodies at 4°C overnight. Then, the membranes were probed with the secondary antibody anti-mouse IgG (Beyotime, China) at 37°C for 60 mins. The protein expression value was detected by an enhanced chemiluminescence system (Tanon, China). The detail information of primary antibodies was listed in Table S2.

Cell proliferation

The cell proliferation rate was examined by the cell counting kit-8 (CCK-8) assay kits (SAB, USA). In brief, cells were cultured for 0, 24, 48, and 72 hrs and mixed with the CCK-8 solution (1:10) for each well. Then, cells were incubated for 1 hr. The OD450 nanometer was measured by a Microplate reader (Pulangxin, China). Triplicates independently assays were needed for each time point.

Glucose transport and lactate production assay

Briefly, the glucose analog 2-NBDG (Molecular Probes, OR) was used as a fluorescent probe for determining the activity of Glucose transport. In order to examine the uptake of 2-NBDG, a total of 5×10^5 cells were seeded in six-well plates. Then, all the cells were pre-incubated in Krebs-Ringer bicarbonate (KRB) buffer (glucose free) for 15 mins after maintaining in a 5% CO₂ atmosphere at 37°C for 24 hrs. After that, cells incubated in fresh KRB buffer supplemented with 2-NBDG for 45 mins at 37°C, 5% CO₂. Microplate reader (Pulangxin, China) was utilized to examine the OD values at wavelength 485 nm. Moreover, Lactate Assay Kit (njcbio, China) was utilized to examine the production of lactate in different cells according to the protocol of the manufacturer.

Xenograft model

Experiment was performed in agreement with the independent ethics committee of the Second Affiliated Hospital of Soochow University and was guided by the Institute's guidelines for animal experiments. Moreover, this research was confirmed by the Institutional Animal Care and Use Committee (IACUC). ZR7530 cells that transfected with siNC or siTRIM11 ($n=5 \times 10^6$) were subcutaneously injected into the right flank of 4–6 week old nude mice ($n=6$ for each group; Shanghai Laboratory Animal Company, China). Tumor length and width were determined every third day for a total of 33 days after injection. Tumor volume was calculated as $\text{length} \times (\text{width}^2/2)$.

Statistical analysis

Statistical analyses were performed by using GraphPad Prism software Version 7.0 (CA, USA). All data represented as means \pm SEM from three independent experiments. Statistical significance was assessed by the analysis of variance. Statistically significant was accepted as the P -value < 0.05 .

Results

TRIM11, GLUT1, and HKII were upregulated in breast cancer samples

Quantitative real-time PCR (qRT-PCR) was performed to quantify the mRNA expression content of TRIM11, GLUT1, and HKII in 35 pairs of breast cancer tissues and matched para-cancerous samples. As shown in Figure 1, it was clear to identify that the mRNA expression level of TRIM11 was obviously increased in breast cancer tissues compared with that of normal samples. Moreover, both the GLUT1 and HKII were also significantly upregulated in breast cancer tissues.

Silencing and overexpression of TRIM11 in breast cancer cells

In order to further investigate the function of TRIM11 in breast cancer cells, qRT-PCR, and Western blot were established to quantify the mRNA and protein content of TRIM11 in five breast cancer cell lines, including MDA-MB-231, MCF7, T47D, and ZR7530 and BT474. Clearly, both the relative mRNA and protein content of TRIM11 were remarkably promoted in T47D, ZR7530 and BT474 cells. Meanwhile, the level of TRIM11 was lowest in MDA-MB-231 cells among all cell lines as indicated (Figure 2A and B). Therefore, T47D, ZR7530 and BT474 cells lines were chosen for silencing the expression of TRIM11. Overexpression of TRIM11 was induced in MDA-MB-231 cells.

To silence the expression of TRIM11 in breast cancer cells, T47D, ZR7530, and BT474 cells were transfected with three siRNAs aiming at human TRIM11 (siTRIM11-1, siTRIM11-2, siTRIM11-3) and a non-specific siRNA (siNC) respectively. The untreated cells were served as the blank control (BLANK). All of the TRIM11 siRNAs were well functioned and deeply inhibited the levels of endogenous TRIM11

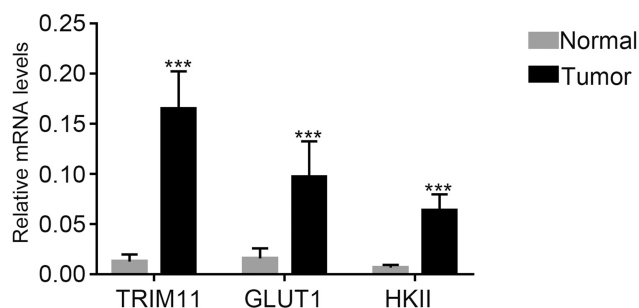


Figure 1 TRIM11, GLUT1, and HKII were upregulated in breast cancer tissues.
Note: *** $P < 0.001$ vs normal.

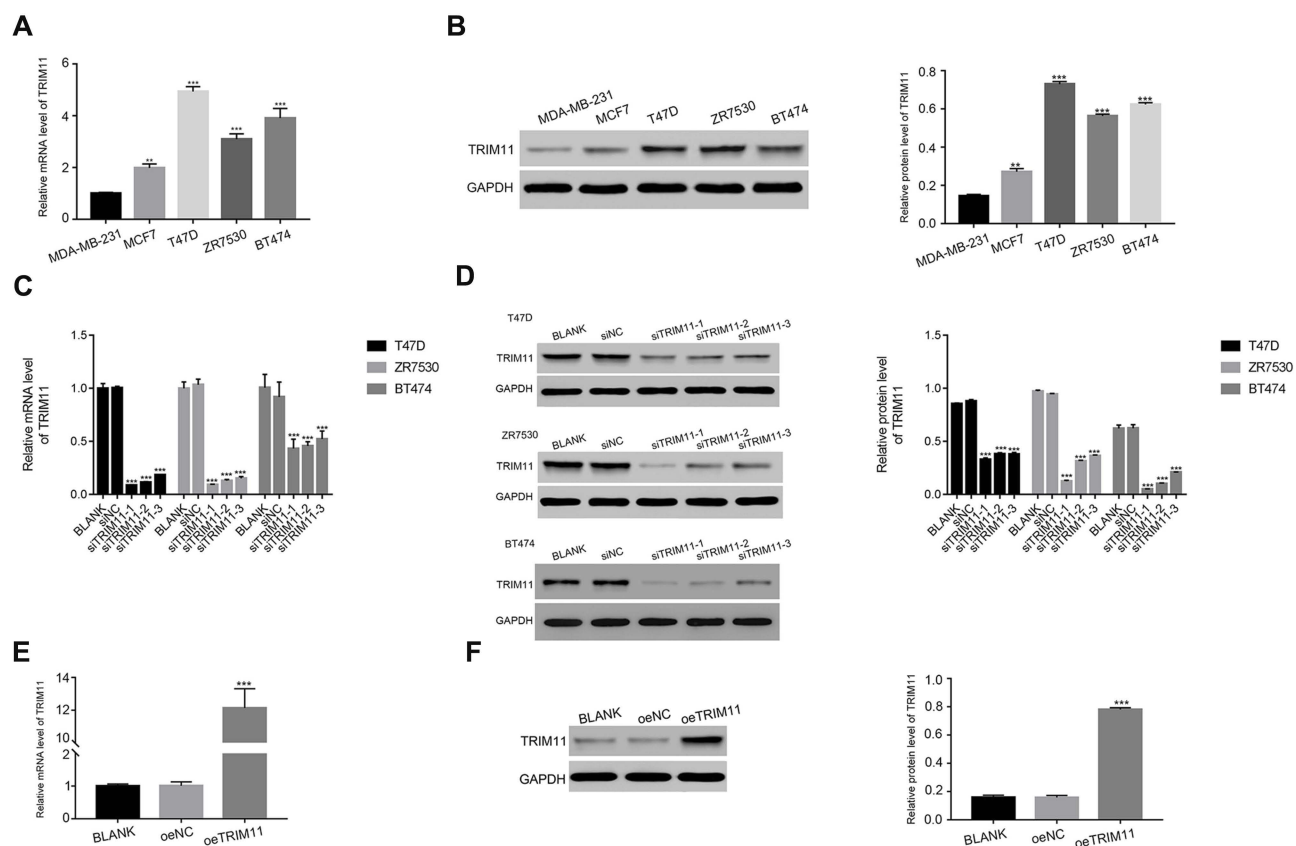


Figure 2 Knockdown and overexpression of TRIM11 in breast cancer cells.

Notes: (A) and (B) stand for the mRNA and protein level of TRIM11 in five breast cancer cell lines as indicated. $***P < 0.001$ vs MDA-MB-231. (C) and (D) stand for the mRNA and protein level of TRIM11 examined in T47D, ZR7530 and BT474 cells that transfected with siNC, siTRIM11-1, siTRIM11-2 or siTRIM11-3, respectively. $***P < 0.001$ vs siNC. (E) and (F) stand for the mRNA and protein level of TRIM11 examined in MDA-MB-231 that transfected with a mock plasmid (oeNC) and a plasmid overexpressing TRIM11 (oeTRIM11). $***P < 0.001$ vs oeNC.

(Figure 2C and D). Therefore, we chose siTRIM11-1 and siTRIM11-2 transfected cells in the following analysis.

As for overexpression of TRIM11, a plasmid containing the full length of TRIM11 cDNA (oeTRIM11) was transfected to MDA-MB-231 cells. A mock plasmid (oeNC) was transfected as a negative control. It was easily identified that the content of TRIM11 was significantly upregulated by oeTRIM11 in MDA-MB-231 cells (Figure 2E and F). Therefore, oeTRIM11 transfected cells were used for further analyses.

Silencing of TRIM11 suppressed the proliferation rate of breast cancer cells

The cell proliferation rate was measured by CCK-8 assay. The proliferation rate of BLANK and siNC transfected cells showed no significant difference in all time point in different cell lines. However, the proliferation rates of T47D, ZR7530, and BT474 cells were suppressed by siTRIM11-1 or siTRIM11-2 at 24 hrs after transfection.

Moverover, siTRIM11-1 or siTRIM11-2 showed a stronger effect in inhibiting the proliferation of different cells as indicated at 48 and 72 hrs after transfection. (Figure 3A–C). Therefore, TRIM11 was a pro-proliferation regulator in breast cancer cells.

Glucose transport activity and lactate production were inhibited in siTRIM11-transfected cells

Next, we determined the glucose transport activity and lactate production in TRIM11 siRNAs-transfected cells. Interestingly, the uptake of the glucose analog 2-NBDG was significantly downregulated in siTRIM11-1 or siTRIM11-2 transfected cells (Figure 3D). Meanwhile, the lactate production was also remarkably decreased in siTRIM11-1 or siTRIM11-2 transfected cells (Figure 3E). Therefore, knockdown of TRIM11 deeply suppressed the activity of glycolysis in T47D, ZR7530, and BT474 cells.

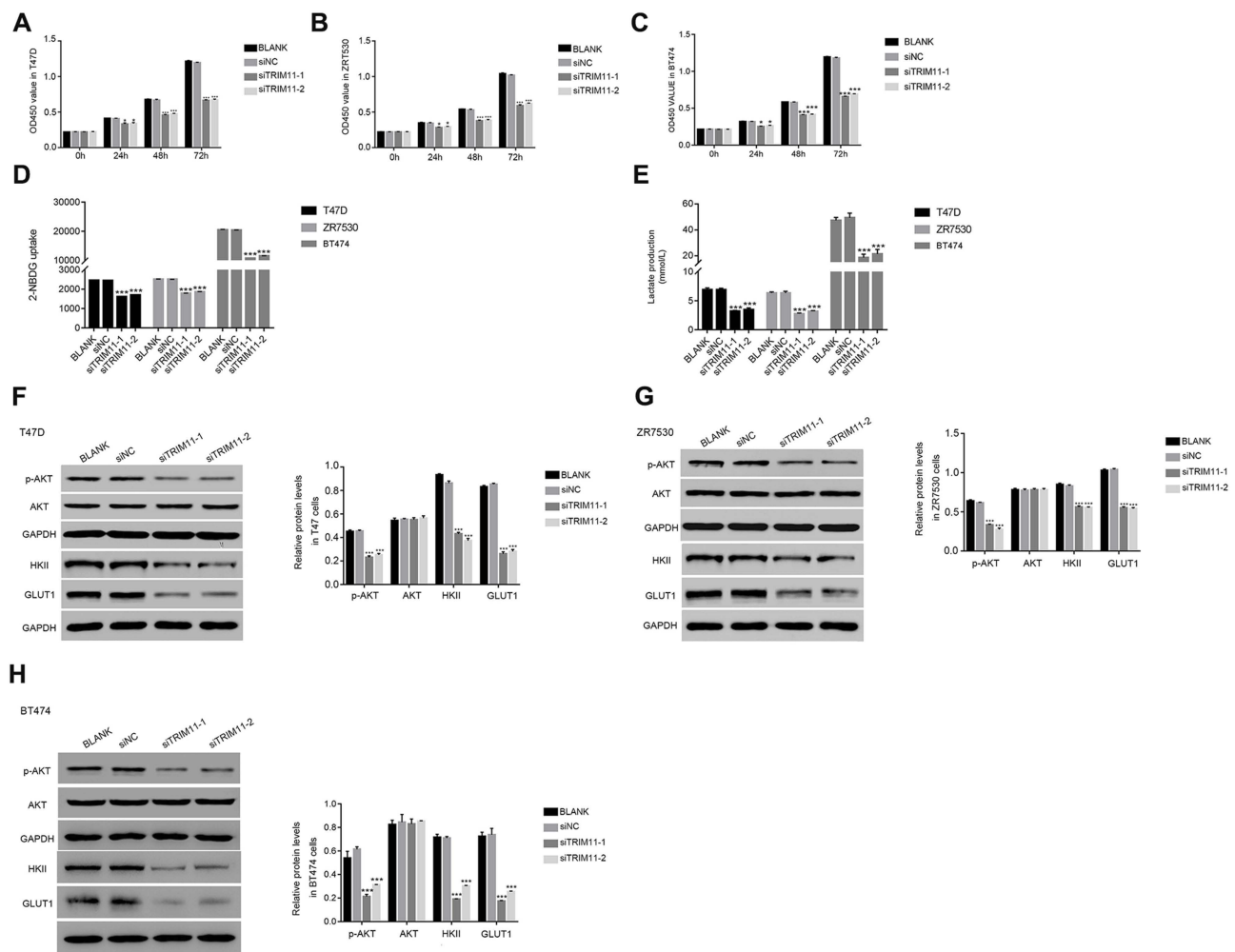


Figure 3 Knockdown of TRIM11 suppressed the proliferation and inhibited the glucose transport activity and lactate production in breast cancer cells.

Notes: (A–C) stand for the cell proliferation was detected 0, 24, 48, and 72 hrs after transfection with siNC, siTRIM11-1, and siTRIM11-2 in T47D, ZR7530 and BT474 cells. * $P < 0.05$ vs siNC, *** $P < 0.001$ vs siNC. (D) Glucose transport activity measured using the fluorescent glucose analog 2-NBDG in T47D, ZR7530 and BT474 cells transfected with siNC, siTRIM11-1, and siTRIM11-2, respectively. *** $P < 0.001$ vs siNC. (E) The production of Lactate in T47D, ZR7530 and BT474 cells transfected with siNC, siTRIM11-1, and siTRIM11-2, respectively. *** $P < 0.001$ vs siNC. (F–H) stand for the protein level of p-AKT, AKT, HKII, and GLUT1 in T47D, ZR7530 and BT474 cells transfected with siNC, siTRIM11-1 and siTRIM11-2, respectively. *** $P < 0.001$ vs siNC.

Then, the protein content of AKT, p-AKT, GLUT1, and HKII was quantified by Western blot in T47D cells transfected with siTRIM11-1 or siTRIM11-2. The content of p-AKT was significantly reduced in siTRIM11-transfected cell. Therefore, knockdown of TRIM11 significantly inhibited the phosphorylation of AKT in T47D cells. Meanwhile, the level of HKII and GLUT1 was also downregulated in siTRIM11-1 or siTRIM11-2 transfected cells (Figure 3F). These results demonstrated that TRIM11 was positively correlated with HKII and GLUT1 and further indicated that TRIM11 involved in the metabolism of glycolysis in breast cancer cells. Interestingly, the similar results were also obtained in ZR7530 or BT474 cells transfected with siTRIM11-1 or siTRIM11-2 (Figure 3G and H).

The function of TRIM11 was suppressed by the AKT inhibitor

In order to further examine the correlation between TRIM11 and AKT, the oeNC or oeTRIM11 transfected cells were cultured with the AKT inhibitor MK-2206, respectively. At 24 hrs after transfection, the proliferation of oeTRIM11 transfected cells was higher than that of oeNC transfected cells. Moreover, overexpression of TRIM11 remarkably upregulated the proliferation rate of breast cancer cells at 48 and 72 hrs after transfection (Figure 4A). These results demonstrated that overexpression of TRIM11 promoted the proliferation of breast cancer cells. However, this effect was deeply suppressed by the AKT inhibitor MK-2206 in all time points after transfection.

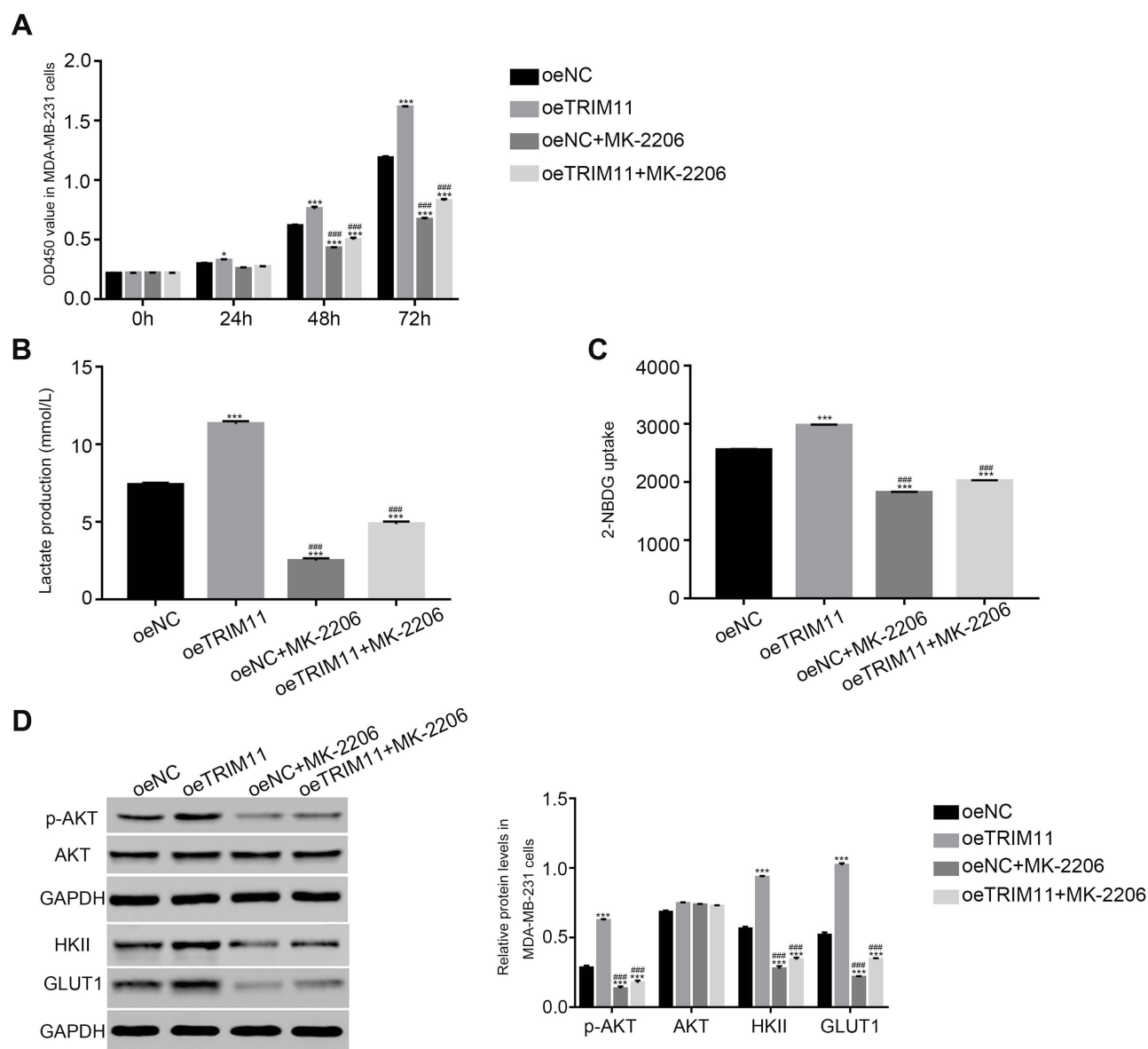


Figure 4 The function of TRIM11 was suppressed by a specific AKT inhibitor MK-2206.

Notes: (A) Cell proliferation was detected 0, 24, 48, and 72 hrs after transfection with oeNC, oeTRIM11 in MDA-MB-231 cells. * $P < 0.05$ vs oeNC, *** $P < 0.001$ vs oeNC; $P < 0.001$ vs oeTRIM11. (B) Glucose transport activity measured using the fluorescent glucose analog 2-NBDG in MDA-MB-231 cells that transfected with oeNC or oeTRIM11, respectively. *** $P < 0.001$ vs oeNC; $P < 0.001$ vs oeTRIM11. (C) The production of Lactate in MDA-MB-231 cells that transfected with oeNC or oeTRIM11, respectively. *** $P < 0.001$ vs oeNC; $P < 0.001$ vs oeTRIM11. (D) The protein level of p-AKT, AKT, HKII, and GLUT1 in MDA-MB-231 cells that transfected with oeNC or oeTRIM11, respectively. *** $P < 0.001$ vs oeNC; $P < 0.001$ vs oeTRIM11.

In addition, we also investigated the glucose transport activity and lactate production in different cells. Obviously, the glucose transport activity and lactate production were significantly upregulated in oeTRIM11 transfected cells. Interestingly, both of them were remarkably downregulated by the AKT inhibitor MK2206 in oeTRIM11 cultured cells (Figure 4B and C). Meanwhile, we also examined the protein content of p-AKT, AKT, HKII, and GLUT1 in the cells as indicated. As shown in Figure 4D, the phosphorylation of AKT was significantly upregulated in oeTRIM11 transfected cells. Moreover, overexpression of TRIM11 promotes the

expression of HKII and GLUT1. Interestingly, the AKT inhibitor deeply suppressed the expression of p-AKT, HKII, and GLUT1 in oeTRIM11 transfected cells. Therefore, TRIM11 might involve in the same pathway with AKT in breast cancer cells.

siTRIM11 suppressed the tumorigenicity of breast cancer cells in nude mice

Next, we analyzed the effect of TRIM11 siRNA on tumorigenicity in vivo. The nude mice were hypodermically injected

with ZR7530 cells that transfected with siNC or siTRIM11, respectively (n=6 for each group). The formation of tumor was examined every third day for a total of 33 days (beginning at day 12). Both of the injected cells were able to develop tumors. However, the TRIM11 siRNA injected cells deeply suppressed the growth rate of tumor in vivo. The weight and volume of siTRIM11 tumors were significantly downregulated compared with that of siNC tumors (Figure 5A and B). Moreover, the apoptosis ratio of siTRIM11 tumor was much higher than that in siNC tumor (Figure 5C). Further, the protein level of TRIM11 was also deeply decreased in siTRIM11 tumors. Meanwhile, the similar results were also detected in the examination for HKII, GLUT1, and p-AKT (Figure 5C and D). Taken together, all these results indicated that knock-down of TRIM11 inhibited the growth of tumor though regulating the glycolysis metabolism.

Discussion

Breast cancer belongs to the most feared tumors in female all over the world, which displays a high degree of heterogeneity.¹⁵ For this reason, the outcomes of traditional therapy (surgery and chemotherapy) methods are not effective enough for breast cancer sufferers. Therefore, deepened the understanding into the molecule network of breast cancer contributes to develop a novel approach for its treatment.

At present research, we systemically analyzed the effect of TRIM11 on breast cancer cells. We induced silencing and overexpression of TRIM11 in breast cancer cells. Results that obtained from these two experimental sections were in agreement. Therefore, our conclusion was more credible.

TRIM11 has been reported as an oncogene in some certain cancers. Previous report has demonstrated that overexpression of TRIM11 induces proliferation and metastasis of lung cancer and gliomas cells.^{4,7,16} Moreover, silencing of TRIM11 deeply reduced the proliferation and invasion of ovarian cancer cells.¹⁷ It has been well elucidated that T47D, ZR7530, and BT474 cells are different types of breast cancer cells.¹⁸ In this study, our findings indicated that TRIM11 was a pro-proliferation factor and presented a similar function in different types of breast cancer cells. Therefore, those results further demonstrated that TRIM11 was a crucial proto-oncogene in the pathogenesis of human breast cancer.

Hexokinase II (HK-II) is necessary for the first step in glycolysis process, which is localized in the cytosol and mitochondria.¹⁹ Previous report has demonstrated that HKII is overexpressed in various human cancers, which shows the potential value as a therapeutic target in the

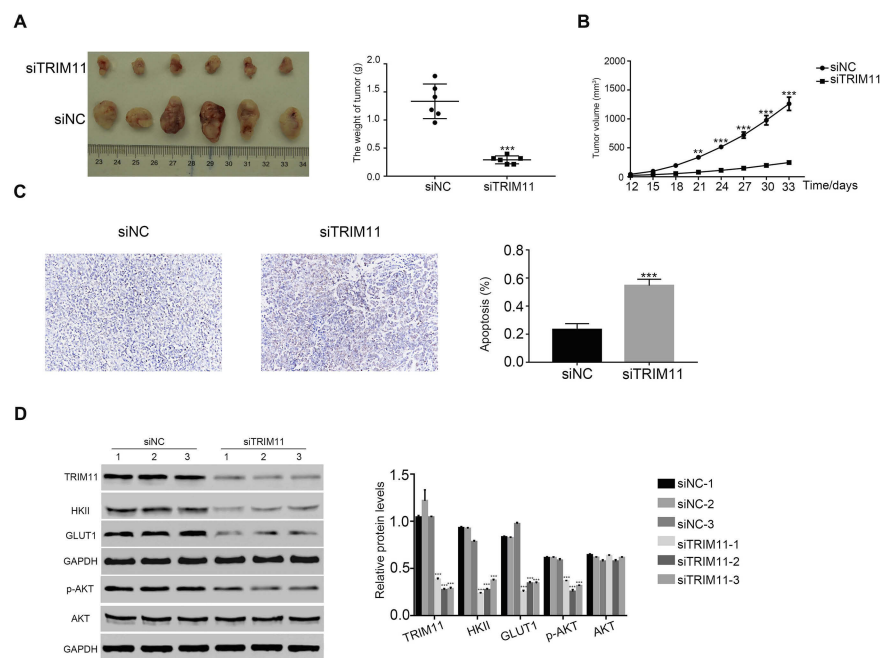


Figure 5 siTRIM11 suppressed the tumorigenicity of breast cancer cells in nude mice.

Notes: (A and B) stand for the tumor weight and volume in nude mice injected with ZR7530 cells transfected with siNC and siTRIM11. **P<0.01 vs siNC, ***P<0.001 vs siNC. (C) TdT-mediated DUTP nick end labeling (TUNEL) assay was performed to examine the apoptosis ratio in siNC or siTRIM11 tumor, ***P<0.001 vs siNC. (D) Protein level of TRIM11, HKII, GLUT1, p-AKT, and AKT was analyzed by Western blot in xenografts from different nude mice as indicated (n=3 for each group), ***P<0.001 vs siNC-1.

cancer treatment.²⁰ It has been reported that HKII promotes the activity of glycolytic to meet the energy consumption in the proliferation and progression of breast cancer cells.²¹ In the present research, the level of HKII was also upregulated in breast cancer tissue and cells. Importantly, these results indicated that HKII was positively correlated with TRIM11 in breast cancer cells. Therefore, TRIM11 might mediate the proliferation of breast cancer cells though regulating HKII.

GLUT1 has been reported as a prognostic biomarker for human breast cancer.²² Previous report has demonstrated that GLUT1 promotes the proliferation and metastasis of breast cancer cells.¹⁰ In addition, suppression of GLUT1 has re-sensitized the radio-resistant breast cancer cells to radiation.²³ In this study, our results indicated that GLUT1 was positively regulated by TRIM11 in breast cancer cells. Therefore, TRIM11 might promote the metabolism of glycolysis though regulating GLUT1 in breast cancer cells.

Much more importantly, our analysis also suggested the positive correlation between TRIM11 and p-AKT in breast cancer cells. The AKT signaling pathway plays an essential role in the progression of breast cancer cells.²⁴ Moreover, it has been demonstrated that the activity of AKT is positively correlated with the level of GLUT1 in ovarian cancer cells.²⁵ In addition, PI3K/GLUT1 signaling pathway stimulates the glucose uptake and lactate metabolic.^{26,27} AKT pathway also promotes the expression of HKII and subsequently increased glucose capture.²⁸ The AKT/GLUT1/HKII signaling pathway is reported as the potential target in the prevention of growth and glycolysis activities in lung cancer cells.¹⁴ At present research, we found GLUT1 and HKII were also upregulated in breast cancer tissues and positively correlated with TRIM11. Therefore, our results indicated that TRIM11 was the upstream component in PI3K/GLUT1/HKII signaling pathway in breast cancer cells.

Conclusion

At the present study, we systemically explored the function of TRIM11 in breast cancer cells. This research not only gained a deep understanding of the biological function of TRIM11 but also provided evidences to indicate its possible signaling pathway in breast cancer cells.

Acknowledgments

We acknowledged the support given by The Second Affiliated Hospital of Soochow University for this research.

Author contributions

All authors made substantial contributions to conception and design, acquisition of data, or analysis and interpretation of data; took part in drafting the article or revising it critically for important intellectual content; gave final approval of the version to be published; and agree to be accountable for all aspects of the work.

Disclosure

The authors report no conflicts of interest in this study.

References

1. Weigelt B, Reis-Filho JS. Histological and molecular types of breast cancer: is there a unifying taxonomy? *Nat Rev Clin Oncol*. 2009;6(12):718–730. doi:10.1038/nrclinonc.2009.166
2. Ferlay J, Soerjomataram I, Dikshit R, et al. Cancer incidence and mortality worldwide: sources, methods and major patterns in GLOBOCAN 2012. *Int J Cancer Manag*. 2015;136(5):E359–E386. doi:10.1002/ijc.29210
3. Feiten S, Dünnebacke J, Heymanns J, et al. Breast cancer morbidity. *Dtsch Arztebl Online*. 2014. doi:10.3238/arztebl.2014.0537
4. Zhang Z, Xu C, Zhang X, et al. TRIM11 upregulation contributes to proliferation, invasion, and EMT of hepatocellular carcinoma cells. *Oncol Res*. 2017;25(5):691–699. doi:10.3727/096504016X14774897404770
5. Liu J, Rao J, Lou X, Zhai J, Ni Z, Wang X. Upregulated TRIM11 exerts its oncogenic effects in hepatocellular carcinoma through inhibition of P53. *Cell Physiol Biochem*. 2017;44(1):255–266. doi:10.1159/000484678
6. Yin Y, Liu L, Zhong J, et al. TRIM11, a direct target of miR-24-3p, promotes cell proliferation and inhibits apoptosis in colon cancer. *Oncotarget*. 2016;7(52):86755–86765. doi:10.18632/oncotarget.13550
7. Wang X, Shi W, Shi H, et al. TRIM11 overexpression promotes proliferation, migration and invasion of lung cancer cells. *J Exp Clin Cancer Res*. 2016;35(1):100. doi:10.1186/s13046-016-0379-y
8. Ra C, Is H, Tw M. Regulation of cancer cell metabolism. *Nat Rev Cancer*. 2011;11:85–95. doi:10.1038/nrc2981
9. Oh S, Kim H, Nam K, Shin I. Silencing of Glut1 induces chemoresistance via modulation of Akt/GSK-3 β /beta-catenin/survivin signaling pathway in breast cancer cells. *Arch Biochem Biophys*. 2017;636:110–122. doi:10.1016/j.abb.2017.08.009
10. Oh S, Kim H, Nam K, Shin I. Glut1 promotes cell proliferation, migration and invasion by regulating epidermal growth factor receptor and integrin signaling in triple-negative breast cancer cells. *BMB Rep*. 2017;50(3):132–137.
11. Venturelli L, Nappini S, Bulfoni M, et al. Glucose is a key driver for GLUT1-mediated nanoparticles internalization in breast cancer cells. *Sci Rep*. 2016;6:21629. doi:10.1038/srep21629
12. Engelman JA. Targeting PI3K signalling in cancer: opportunities, challenges and limitations. *Nat Rev Cancer*. 2009;9(8):550–562. doi:10.1038/nrc2664
13. Saal LH, Johansson P, Holm K, et al. Poor prognosis in carcinoma is associated with a gene expression signature of aberrant PTEN tumor suppressor pathway activity. *Proc Natl Acad Sci U S A*. 2007;104(18):7564–7569. doi:10.1073/pnas.0702507104
14. Zhao X, Lu C, Chu W, et al. MicroRNA-124 suppresses proliferation and glycolysis in non-small cell lung cancer cells by targeting AKT-GLUT1/HKII. *Tumour Biol*. 2017;39(5):1010428317706215. doi:10.1177/1010428317706215
15. Curtis C, Shah SP, Chin SF, et al. The genomic and transcriptomic architecture of 2,000 breast tumours reveals novel subgroups. *Nature*. 2012;486(7403):346–352. doi:10.1038/nature10983

16. Di K, Linskey ME, Bota DA. TRIM11 is overexpressed in high-grade gliomas and promotes proliferation, invasion, migration and glial tumor growth. *Oncogene*. 2013;32(42):5038–5047. doi:10.1038/ncr.2012.531
17. Chen Y, Sun J, Ma J. Proliferation and invasion of ovarian cancer cells are suppressed by knockdown of TRIM11. *Oncol Lett*. 2017;14(2):2125–2130. doi:10.3892/ol.2017.6432
18. Dai X, Cheng H, Bai Z, Li J. Breast cancer cell line classification and its relevance with breast tumor subtyping. *J Cancer*. 2017;8(16):3131–3141. doi:10.7150/jca.18457
19. Roberts DJ, Miyamoto S. Hexokinase II integrates energy metabolism and cellular protection: acting on mitochondria and TORCing to autophagy. *Cell Death Differ*. 2015;22(2):248–257. doi:10.1038/cdd.2014.173
20. Thamrongwarangoon U, Seubwai W, Phoomak C, et al. Targeting hexokinase II as a possible therapy for cholangiocarcinoma. *Biochem Biophys Res Commun*. 2017;484(2):409–415. doi:10.1016/j.bbrc.2017.01.139
21. Sato-Tadano A, Suzuki T, Amari M, et al. Hexokinase II in breast carcinoma: a potent prognostic factor associated with hypoxia-inducible factor-1 α and Ki-67. *Cancer Sci*. 2013;104(10):1380–1388. doi:10.1111/cas.12238
22. Younes M, Brown RW, Mody DR, Fernandez L, Laucirica R. GLUT1 expression in human breast carcinoma: correlation with known prognostic markers. *Anticancer Res*. 1995;15(6B):2895–2898.
23. Zhao F, Ming J, Zhou Y, Fan L. Inhibition of Glut1 by WZB117 sensitizes radioresistant breast cancer cells to irradiation. *Cancer Chemother Pharmacol*. 2016;77(5):963–972. doi:10.1007/s00280-016-3007-9
24. Guerrero-Zotano A, Mayer IA, Arteaga CL. PI3K/AKT/mTOR: role in breast cancer progression, drug resistance, and treatment. *Cancer Metastasis Rev*. 2016;35(4):515–524. doi:10.1007/s10555-016-9637-x
25. Phadngam S, Follo C, Castiglioni A, Isidoro C. PTEN dephosphorylates AKT to prevent the expression of GLUT1 on plasmamembrane and to limit glucose consumption in cancer cells. *Oncotarget*. 2016;7(51):84999–85020. doi:10.18632/oncotarget.13113
26. Lu H, Li X, Luo Z, Liu J, Fan Z. Cetuximab reverses the Warburg effect by inhibiting HIF-1-regulated LDH-A. *Mol Cancer Ther*. 2013;12(10):2187–2199. doi:10.1158/1535-7163.MCT-12-1245
27. Wieman HL, Wofford JA, Rathmell JC. Cytokine stimulation promotes glucose uptake via phosphatidylinositol-3 kinase/Akt regulation of Glut1 activity and trafficking. *Mol Biol Cell*. 2007;18(4):1437–1446. doi:10.1091/mbc.e06-07-0593
28. Hou X, Liu Y, Liu H, et al. PERK silence inhibits glioma cell growth under low glucose stress by blockage of p-AKT and subsequent HK2's mitochondria translocation. *Sci Rep*. 2015;5:9065. doi:10.1038/srep09065

Supplementary materials

Primer sequence information

Homo sapiens tripartite motif containing 11 (TRIM11), mRNA

NM_145214.2

Primer F 5' CACCTAAGCTGCACAGTTCC 3'

Primer R 5' GGCTGCCTCCTAATTCTTCC 3'

Pos: 2008–2192

Amplified product: Size: 185 bps

Homo sapiens solute carrier family 2 member 1 (GLUT1), mRNA

NM_006516.3

Primer F 5' TGCAGGAGATGAAGGAAG 3'

Primer R 5' CAATGGTGGCATAACACAG 3'

Pos: 939–1151

Amplified product: Size: 213 bps

Homo sapiens hexokinase 2 (HK2), mRNA

NM_000189.4

Primer F 5' AGGAGGATGAAGGTAGAAATGG 3'

Primer R 5' ACTGGACAATGTGGTCAAAG 3'

Pos: 3491–3667

Amplified product: Size: 277 bps

Homo sapiens glyceraldehyde-3-phosphate dehydrogenase (GAPDH), transcript variant2, mRNA

NM_001256799.2

Primer F 5' AATCCCATCACCATCTTC 3'

Primer R 5' AGGCTGTTGTCATACTTC 3'

Pos: 436–653

Amplified product: Size: 218 bps

Table S1 Human gene TRIM11 (NM_145214.2) RNAi targeting locus information

RNAi Targeting Locus		Sequence
Name	Locus position	
siTRIM11-1	672–690	GGAGAAGTCACTGGAGCAT
siTRIM11-2	708–726	GGATGCGTTGCTGTCCAA
siTRIM11-3	746–764	GCGTCTGTGGCAGAAGAT

Table S2 The primary antibodies information

Antibody name	Catalogue	Source	Dilution factor
TRIM11	Ab111694	Abcam, UK	1:2,000
GLUT1	Ab115730	Abcam, UK	1:8,000
HKII	Ab104836	Abcam, UK	1:500
p-AKT	#9271	CST, USA	1:1,000
AKT	#9272	CST, USA	1:1,000
GAPDH	#5174	CST, USA	1:2,000

OncoTargets and Therapy

Dovepress

Publish your work in this journal

OncoTargets and Therapy is an international, peer-reviewed, open access journal focusing on the pathological basis of all cancers, potential targets for therapy and treatment protocols employed to improve the management of cancer patients. The journal also focuses on the impact of management programs and new therapeutic

agents and protocols on patient perspectives such as quality of life, adherence and satisfaction. The manuscript management system is completely online and includes a very quick and fair peer-review system, which is all easy to use. Visit <http://www.dovepress.com/testimonials.php> to read real quotes from published authors.

Submit your manuscript here: <https://www.dovepress.com/oncotargets-and-therapy-journal>