

A kinetic platform for in silico modeling of the metabolic dynamics in *Escherichia coli*

Aditya Barve¹
Anvita Gupta²
Suresh M Solapure²
Ansu Kumar¹
Vasanthi Ramachandran²
Kothandaraman Seshadri²
Shireen Vali¹
Santanu Datta²

¹Cellworks Research India Pvt. Ltd, Bangalore, India; ²AstraZeneca, Bangalore, India

Background: A prerequisite for a successful design and discovery of an antibacterial drug is the identification of essential targets as well as potent inhibitors that adversely affect the survival of bacteria. In order to understand how intracellular perturbations occur due to inhibition of essential metabolic pathways, we have built, through the use of ordinary differential equations, a mathematical model of 8 major *Escherichia coli* pathways.

Results: Individual in vitro enzyme kinetic parameters published in the literature were used to build the network of pathways in such a way that the flux distribution matched that reported from whole cells. Gene regulation at the transcription level as well as feedback regulation of enzyme activity was incorporated as reported in the literature. The unknown kinetic parameters were estimated by trial and error through simulations by observing network stability. Metabolites, whose biosynthetic pathways were not represented in this platform, were provided at a fixed concentration. Unutilized products were maintained at a fixed concentration by removing excess quantities from the platform. This approach enabled us to achieve steady state levels of all the metabolites in the cell. The output of various simulations correlated well with those previously published.

Conclusion: Such a virtual platform can be exploited for target identification through assessment of their vulnerability, desirable mode of target enzyme inhibition, and metabolite profiling to ascribe mechanism of action following a specific target inhibition. Vulnerability of targets in the biosynthetic pathway of coenzyme A was evaluated using this platform. In addition, we also report the utility of this platform in understanding the impact of a physiologically relevant carbon source, glucose versus acetate, on metabolite profiles of bacterial pathogens.

Keywords: antibacterial drug, mathematical model, kinetic platform, metabolic dynamics, *Escherichia coli*

Background

One of the main problems faced by the current paradigm of drug discovery in the therapeutic area of infection is in identification of a valid drug target, followed by an understanding of the concentration dynamics of the metabolites in response to its inhibition. A valid target at the genetic level is the one that is essential for the survival of the pathogen. At the functional level, the target protein structure and/or its biological activity is substantially different from that of the host. However, not all targets with these criteria yield inhibitors that kill the pathogen specifically through the mechanism intended. This necessitates generating a large number of targets suitable for high throughput screening (HTS).¹ A recent review of anti-infective HTS by Payne et al indicated that the success rate is abysmally low even with a large number of HTS campaigns.² Hence there is an urgent need to strategize and modify guidelines that define an ideal anti-infective drug target.

Correspondence: Suresh M Solapure
Infection Pharmacology,
AstraZeneca India Pvt. Ltd,
Bellary Road, Hebbal,
Bangalore 560024,
India
Email suresh.solapure@astrazeneca.com

Many potent inhibitors of essential enzymes have been reported to lack antibacterial activity.³ In most cases, efflux or lack of permeability across the bacterial cell wall has been suspected to be a principal factor responsible for this phenomenon. This explanation has remained mainly unsubstantiated since it is difficult to determine the exact cause. However a quantitative relationship between enzyme inhibition and its effect on the growth of the pathogen has been delineated. Eisenthal and Cornish-Bowden have postulated two basic mechanisms by which the enzyme inhibition leads to the cessation of growth of an organism: “either the flux through an essential metabolic pathway can be decreased to a point where life is no longer possible or metabolite concentration can be increased to toxic levels”.⁴ Recent evidence also indicates that independent of the target inhibited, bacterial cell death ultimately occurs through a generalized mechanism involving modulation of multiple pathways that leads to generation of free radicals.⁵ Thus there is a need to interconnect inhibition of target enzyme in vitro and inside the cell. It is well known that inhibition or over expression of an enzyme in a metabolic pathway does not guarantee either a change in flux or a concomitant increase or decrease in the metabolite concentration. The activity of any enzyme inside the cell depends on its own substrate concentration and kinetic properties (eg, K_m , V_{max}) as well as those of other enzymes in that particular pathway.

On the other hand, the degree of enzyme inhibition inside the cell is related to the mode of enzyme inhibition (MOI) as well as to the enzyme-inhibitor dissociation constant (K_i). Therefore, it is essential to consider a network of enzymes or pathways around a particular target enzyme so as to predict the effect of its inhibition on the overall cell metabolism. Since target gene knockouts mimic complete inhibition inside the cell, it may not be possible to achieve the same inhibition through compound-mediated inhibition. It is thus necessary to assess the effect of partial inhibition through regulated expression of a target gene.⁶ Since this involves extensive experimentation, a better alternative is to predict cell vulnerability in response to a specific target enzyme inhibition through in silico simulations. Vulnerability is defined as the extent of inhibition of a target required to have a negative impact on growth leading to cell death.⁷

Towards this objective, we have built an in silico dynamic network of 8 major pathways in *Escherichia coli*, including glycolysis, pentose phosphate pathway, and tricarboxylic acid (TCA) cycle along with glyoxylate shunt, fatty acid metabolism, and biosyntheses of branched chain amino acids, pantothenic acid, and coenzyme A (CoA) (Figure 1). These pathways were chosen based on their connection to central carbon metabolism and their potential for possessing drug targets, for example, isocitrate lyase or pantothenate kinase, in drug

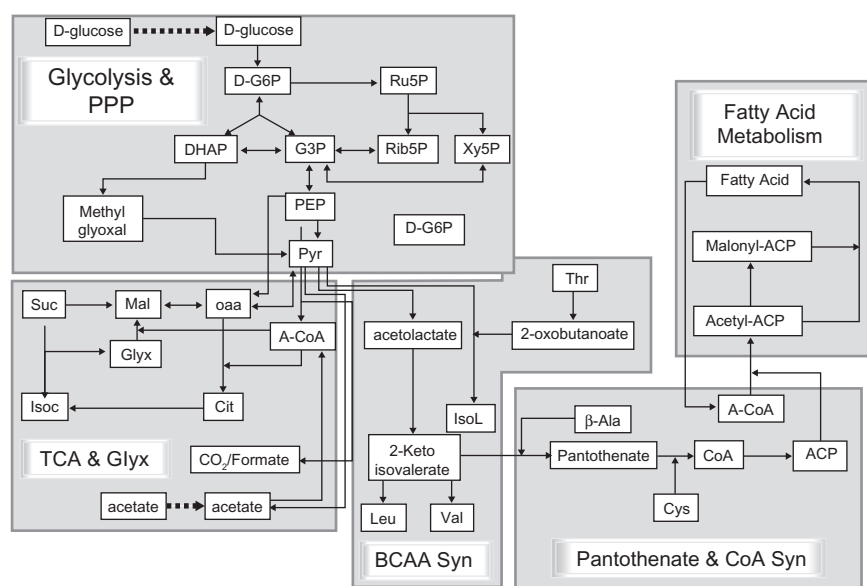


Figure 1 Schematic representation of pathways modeled on this platform. Each pathway is represented by central reactions or metabolites, truncated such for simplistic representation.

Pathway abbreviations: PPP, pentose phosphate pathway; Fatty Acid Metabolism, pathway of synthesis and breakdown of fatty acids; Pantothenate and CoA Syn, pathway of pantothenate and coenzyme A synthesis; BCAA synthesis, branched chain amino acid synthesis pathway; TCA and Glyx, pathways of tricarboxylic acid cycle and glyoxylate shunt; Methylglyoxal, methylglyoxal pathway.

Metabolite abbreviations: D-G6P, D-glucose-6-phosphate; Ru5P, ribulose-5-phosphate; Rib5P, ribose-5-phosphate; Xy5P, xylose-5-phosphate; G3P, glyceraldehyde-3-phosphate; DHAP, dihydroxyacetone phosphate; PEP, phosphoenolpyruvate; Pyr, pyruvate; A-CoA, acetyl-CoA; OAA, oxaloacetate; Mal, malate; Suc, succinate; Isoc, isocitrate; Glyx, glyoxylate; Cit, citrate; Thr, Threonine; IsoL, isoleucine; Leu, leucine; Val, valine; ACP, acyl carrier protein; CoA, coenzyme A; Cys, cysteine; β -Ala, beta-alanine.

discovery against pathogens like *Mycobacterium tuberculosis*. Published data on enzyme kinetics, pathway flux distribution, operon structure, and gene regulation were used to build this platform. The pathway dynamics were simulated by inter-connecting ordinary differential equations describing kinetic behavior of each enzyme in the pathway. Such a kinetic model is thus a computational and mathematical framework, built by using intracellular enzyme as well as metabolite concentration and other kinetic parameters. This platform is expected to elicit responses to perturbations in a fashion similar to the way the natural system in question would. This type of modeling has been referred to as an “impossible” problem, primarily because of the dearth of parametric data required to give meaning to flux equations, and, secondly, the absence of a software that can simulate and give stable solutions to systems comprising thousands of ordinary differential equations (ODEs). The proprietary Cellworks (Cellworks Group, Inc., Saratoga, CA, USA) technology, iC-PHYS™, can be used to create and simulate such a platform. Cell growth could be simulated by providing glucose or acetate as a carbon source (C-source) along with essential metabolites (metabolites not synthesized on this platform) such as beta-alanine, threonine, and cysteine. Altogether, 189 genes and 449 biochemical reactions covering 434 metabolites were modeled on this platform. The model was aligned (see Materials and Methods – Alignment of the platform) with data reported in the literature and “frozen” so that the subsequent validation studies did not require any alteration in the model parameters or equations. Validation studies were carried out using published data for *E. coli*. Various enzymes were evaluated as potential drug targets and those that were either vulnerable or relatively immune to inhibition of a specific type were identified and some experimentally verified. Since there is a significant overlap in the metabolic pathways among various bacteria, we tested the predictive capability of the in silico platform by correlating model predictions with experiments carried out on *Mycobacterium bovis* BCG as a surrogate for *M. tuberculosis*.

Results

Glycolysis, TCA cycle, and glyoxylate shunt

From the glycolytic pathway, *tpiA* (triose phosphate isomerase) knockout was used for validation. This knockout showed normal cell growth due to activation of the methylglyoxal pathway and the flux distribution (Table 1) indicated 18-fold higher flux of dihydroxyacetone phosphate (DHAP) to methylglyoxal. This was similar to the experimental values reported earlier.⁸

Table 1 Comparison of predicted flux distribution values for *tpiA* gene knockout (KO) mutant with reported experimental values obtained using glucose as sole source of carbon

Reactions	Evolved (800 generations) experimental KO/normal (<i>tpiA</i>)	Predictive KO/normal (<i>tpiA</i>)
Glucose + phosphoenolpyruvate (PEP) → glucose-6-phosphate (G6P) + pyruvate (PYR)	0.825	0.828
G6P ↔ fructose-6-phosphate (F6P)	1.05	1.02
Glyceraldehyde-3-phosphate (G3P) → PEP	0.503	0.57
PYR → acetyl-CoA (AcCoA) + CO ₂	1.01	1.16
G6P → 6-phospho-D-gluconate (6PG)	0.875	0.97
6PG → (D-ribulose 5-phosphate) Ru5P + CO ₂	0.96	0.93
AcCoA + oxaloacetate (OAA) → citrate (CIT)	1.89	1.16
Dihydroxyacetone phosphate (DHAP) → methylglyoxylate (MGLX)	83/UD	17.65
MGLX → PYR	83/UD	17.65
PEP + CO ₂ → OAA	0.878	0.8

Abbreviation: UD, undetectable levels.

The ability of the platform to predict growth of *E. coli* on acetate as C-source was tested and the resulting flux data compared with the reported values.^{9–11} With equimolar quantities of acetate or glucose as sole source of carbon, it was found that the rate of biomass generation on acetate was 2.8-fold lower (Figure 2), comparable to the experimental value of 2.18. As a retrospective study, fluxes for various reactions in glycolytic pathway and TCA cycle including glyoxylate shunt were corroborated with the published data after appropriate normalization (Table 2). The predicted flux through the pentose phosphate pathway on acetate as C-source was higher than reported values. This discrepancy could be due to activation of trehalose biosynthesis after the osmotic imbalance experienced by *E. coli* growing on acetate as C-source, thereby accounting for the excess flux through the pentose phosphate pathway.^{12–14}

The glyoxylate shunt consists of 2 enzymes, isocitrate lyase (AceA) and malate synthase (AceB). Strains like *E. coli* MG1665 have two isozymes (AceB and GlcB for malate synthase), while *E. coli* O:157 Sakai strain has only one of these. Here, we have considered only one malate synthase isozyme, which is AceB. Reported Km values for isocitrate are

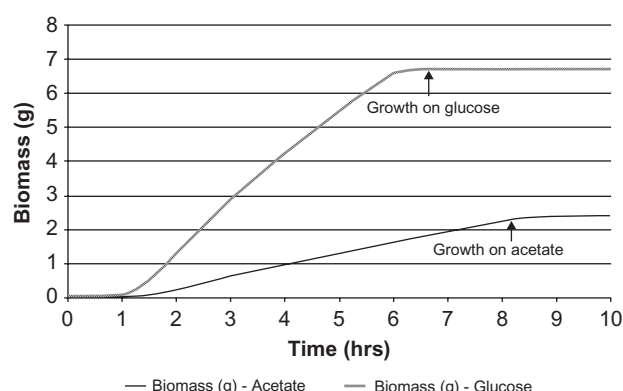


Figure 2 Growth profile of an *E. coli* cell on glucose and acetate as carbon source. *E. coli* cell growth was modeled after providing equimolar quantities of glucose or acetate as the sole source of carbon. Rate of cell growth was found to be 2.8-fold higher on glucose than on acetate.

604 and 12 μM for isocitrate lyase and isocitrate dehydrogenase (Icd), respectively. On glucose as C-source, most of the carbon flux is reported to go through Icd due to its higher affinity for isocitrate and its low intracellular concentration (30 μM). When acetate is used as C-source, *aceBAK* operon is switched on which in turn leads to inactivation of Icd by AceK through phosphorylation, resulting in an increased flux of isocitrate through glyoxylate shunt.¹¹ Therefore, virtual knockouts of *aceA* and *aceB* were tested on the platform for the effects on the flux of isocitrate through the TCA cycle and glyoxylate shunt using acetate or glucose as C-source. It was observed that the flux from isocitrate to α -ketoglutarate was 2-fold higher on glucose whereas the flux through glyoxylate shunt was 10-fold higher on acetate. The relative flux distribution on acetate versus glucose was similar to that reported in the literature (Table 3).¹⁰ As expected, the rate of biomass generation declined when the C-source was changed from

Table 2 Comparison of flux distribution values, normalized with respect to predicted uptake of acetate (16.9 $\mu\text{moles/sec}$), obtained using acetate as sole source of carbon

Reactions	Experimental relative flux (%)	Platform relative flux (%)
PEP \rightarrow G3P	12.25	10.64
G6P \rightarrow 6PG	2.18	8.64
6PG \rightarrow Ru5P + CO_2	2.18	8.64
AcCoA + OAA \rightarrow CIT	71.58	72.14
ICT \rightarrow α -keto glutarate (2-KG) + CO_2	48.81	44.92
Malate (MAL) \leftrightarrow OAA	87.15	98.11
PEP + CO_2 \leftrightarrow OAA	11.95	17.14
MAL \rightarrow PYR + CO_2	4.96	4.05
Isocitrate (ICT) \rightarrow glyoxylate + succinate (SUC)	22.77	27.22
Glyoxylate + AcCoA \rightarrow MAL	22.77	27.22

Abbreviation: See Table 1.

Table 3 Predicted changes in tricarboxylic acid (TCA) cycle and glyoxylate shunt fluxes upon change in sole source of carbon from glucose to acetate were compared with the reported values⁹

TCA and glyoxylate shunt	Experimental result	Predictive result
Reaction	Ratio	Ratio
AcCoA + OAA \rightarrow CIT	3.58	1.65
CIT \rightarrow ICT	3.58	1.81
ICT \rightarrow 2-KG + CO_2	2.58	0.514
2-KG \rightarrow SUC	3.125	0.606
SUC \leftrightarrow fumarate (FUM)	4.416	1.943
FUM \leftrightarrow MAL	4.416	1.723
MAL \leftrightarrow OAA	5.312	3.22
ICT \rightarrow glyoxylate + SUC	Many fold ^a	10.8
Glyoxylate + AcCoA \rightarrow MAL	Many fold	10.8

Notes: Table shows ratio of the flux on acetate to the flux on glucose. ^aFluxes were not detectable on glucose.

Abbreviation: See Tables 1 and 2.

glucose to acetate for wild type and complete inhibition of growth was observed in both the knockouts (Figure 3A, 3B).

Fatty acid biosynthetic pathway

In this pathway, genes *fabI*, *fabD*, *fabG*, *fabA*, *fabZ*, and *fabB* are reported to be essential for cell growth.¹⁵ The experimental knockout of *fabF* resulted in insignificant reduction

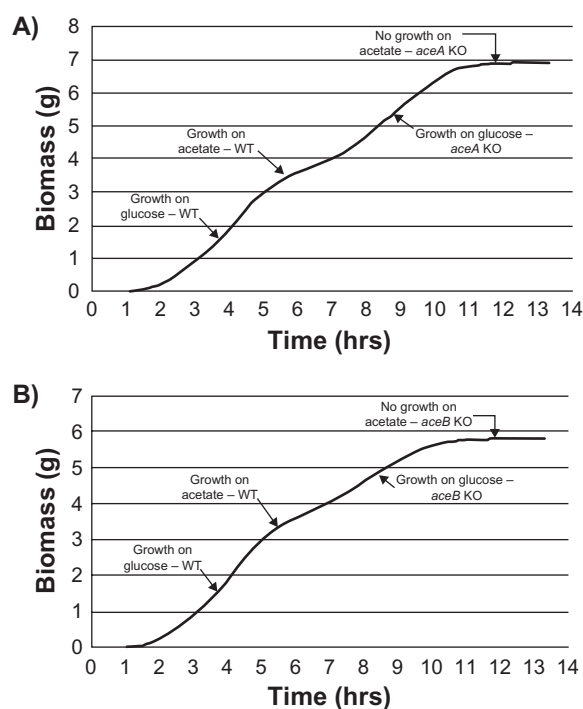


Figure 3 Essentiality of the glyoxylate shunt during growth on acetate as carbon source. Growth profile of *E. coli* after *aceA* **A**) and *aceB* **B**) gene knockout (KO): Initially, wild type (WT) *E. coli* cell growth was modeled on glucose followed by acetate. In the second phase, growth of gene knockout mutant of *E. coli* was modeled under similar conditions. Growth profile under each condition was modeled for 12,000 seconds. Although both *aceA* and *aceB* knockout mutants showed a similar growth rate on glucose as that of wild type, they did not grow on acetate.

in growth rate whereas *fabI* knockout did not grow at all. FabI is responsible for the conversion of *trans*-2-enoyl-acyl carrier protein (ACP) to a 2,3,4-saturated-ACP wherein both NADH and NADPH can be the reducing agents for the reaction. A knockout of *fabI* results in growth inhibition since no other enzyme exists to catalyze this particular reaction. The *fabF* gene is involved in the formation of the beta-ketoacyl ACP form in the initiation as well as the elongation steps in saturated fatty acid biosynthesis. The knockout of *fabF* results in the flux diversion into other reactions carried out by FabB. Flux distribution in wild type and *fabF* knockouts can be seen in Tables S4 and S5. This experimental observation could be simulated in this model using the respective virtual gene knockouts at a constant glucose source concentration of 670 μ M. Knockouts were performed after permitting initial growth. The *fabI* knockout did not show growth whereas *fabF* knockout exhibited normal growth (Figure 4) as expected.

CoA biosynthetic pathway

Steady state levels of the total CoA pool as well as CoA and acetyl CoA, using glucose and acetate as the sole C-source generated using this platform (Table S2), were in close agreement with the experimental values reported in the literature.¹⁶ Multiple scenarios such as effects of overexpression of *coaA*, reduction in levels of CoA, and effect of pantothenate analogs on cell growth were simulated in this platform. The moderate (2- to 3-fold) increase in CoA levels following overexpression of *coaA*, inhibition of cell growth observed only after 95% reduction in CoA levels, and growth inhibition exerted by N5-pantothenate analogs through depletion of normal CoA levels (data not shown) were similar to the experimental observations reported in literature.^{17,18}

The vulnerability of three major targets in this pathway, CoaA, CoaD, and CoaE, was assessed by predicting the minimum level of target enzyme inhibition required for

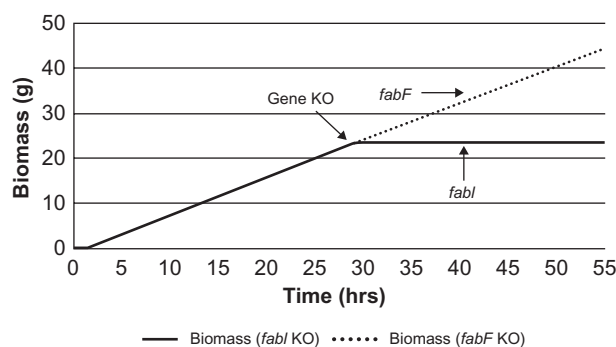


Figure 4 Essentiality of genes involved in fatty acid biosynthesis. Growth profile of *E. coli* after *fabF* and *fabI* gene knockout (KO). *E. coli* did not grow when *fabI* gene was knocked out whereas *fabF* gene knockout did not affect cell growth.

the cessation of cell growth. Activity was modulated using gene knockdown as well as through various MOI. A gradual reduction in CoA levels was observed following stepwise knockdown of *coaA* (Figure 5B). On the other hand, a steep decline was observed only after 99% of *coaE* was knocked down (Figure 6B). As a result, growth inhibition was observed only after 99% knockdown of *coaA* or *coaD* (Figures 5A and 6A). A similar growth pattern was observed for *coaE* knockdown (data not shown). A reduction in CoA levels following knockdown of CoaD/E activity could, in turn, alleviate the feedback inhibition on CoaA activity, thereby compensating for the overall flux until 99% activity of CoaD/E is affected. In addition, the flux of the CoA pathway was solely dependent on CoaA levels (data not shown). Both these observations indicated that the CoaA-catalyzed reaction was the rate-limiting step in this pathway. In spite of being described as a rate-limiting enzyme, more than 95% reduction in CoaA activity was required for growth inhibition, as the steady state levels of CoA were in large excess (20-fold) of what is critical for cell survival.

Enzyme inhibitors obtained during high throughput screening against an enzyme target could be competitive or

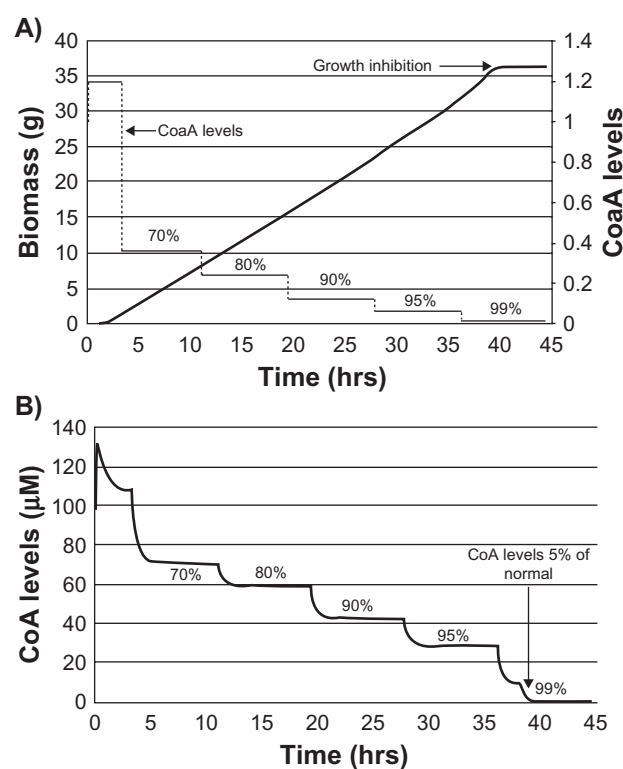


Figure 5 Reduction in coenzyme A levels (CoA) and observed growth inhibition with graded knockdown of *coaA*. Growth profile of *E. coli* after *coaA* gene knockout. Percentage values indicate percentage knockdown. Sequential knockdown of *coaA* gene product resulted in growth inhibition only after 99% knockdown of *coaA* (A). CoA levels decreased in proportion to percentage knockdown in *coaA* gene product (B). Growth inhibition was observed after CoA levels were reduced by >95%.

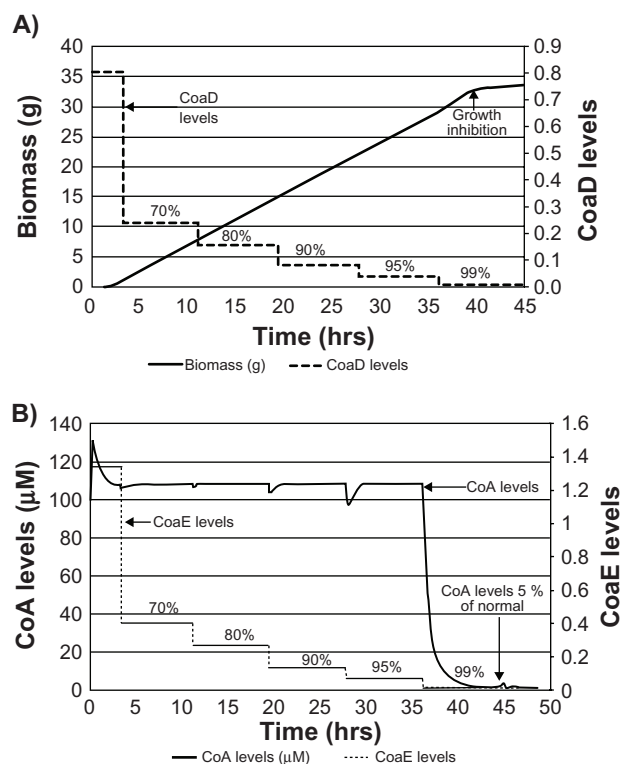


Figure 6 Reduction in CoA levels and growth inhibition with sequential knock down of *coaD* and *coaE*. Values in percentage indicate percentage knockdown. A steep reduction in CoA levels was observed only after 99% knockdown of *coaD* (A). Similarly, inhibition of growth was observed only after 99% knockdown of *coaE* gene product (B).

uncompetitive or noncompetitive with its substrate. After predicting the extent of target enzyme inhibition required for growth inhibition, various modes of CoaA inhibition were simulated with the aim of ranking them in terms of $[I]/K_i$ required for growth inhibition. The following equations were used to model an external inhibitor:

Competitive inhibition where the K_m for ATP (adenosine tri-phosphate) increases –

$$K_{m_{ATP}} = K_{ATP} * (1 + ([CoA]/K_{i_{CoA}}) + ([Acetyl-CoA]/K_{i_{ACoA}}) + (I/K_{ies}))$$

Uncompetitive inhibition where the K_m for ATP as well as the V_{max} decrease –

$$K_{m_{ATP}} = (K_{ATP} * (1 + ([CoA]/K_{i_{CoA}}) + ([Acetyl-CoA]/K_{i_{ACoA}}) + (I/K_{ies}))) / (1 + I/K_{ies}) \text{ and}$$

$$V_{f_app} = V_f / (1 + I/K_{ies})$$

Since $K_{ies} \gg K_{ies}$ in the case of uncompetitive inhibitors, I/K_{ies} in the numerator tends to zero. Therefore the net effect of I/K_{ies} is a decrease in $K_{m_{ATP}}$ in the presence of an uncompetitive inhibitor. For pure noncompetitive inhibition, the K_m for ATP remains the same while the V_{max} decreases. On the other hand, mixed noncompetitive inhibition entails an increase in the K_m for ATP and a decrease in the value for V_{max} .

The inhibitor was assumed to bind free enzyme wherein feedback inhibitors such as CoA or acetyl CoA could displace it. Predicted values of flux indicated that a mixed or pure noncompetitive inhibitor would require a 20-fold lower $[I]/K_i$ ratio than the competitive inhibitor (Figure 7). This result is in accordance with the Cheng-Prusoff relationship between enzyme IC_{50} and K_i values. Such predictions could be valuable in optimizing CoaA inhibitors to achieve potent antibacterial activity. Growth inhibition in the presence of a mixed noncompetitive inhibitor was preceded by a steady decline in CoA levels and simultaneous accumulation of pantothenate. The time delay observed for growth inhibition corresponded to the time required

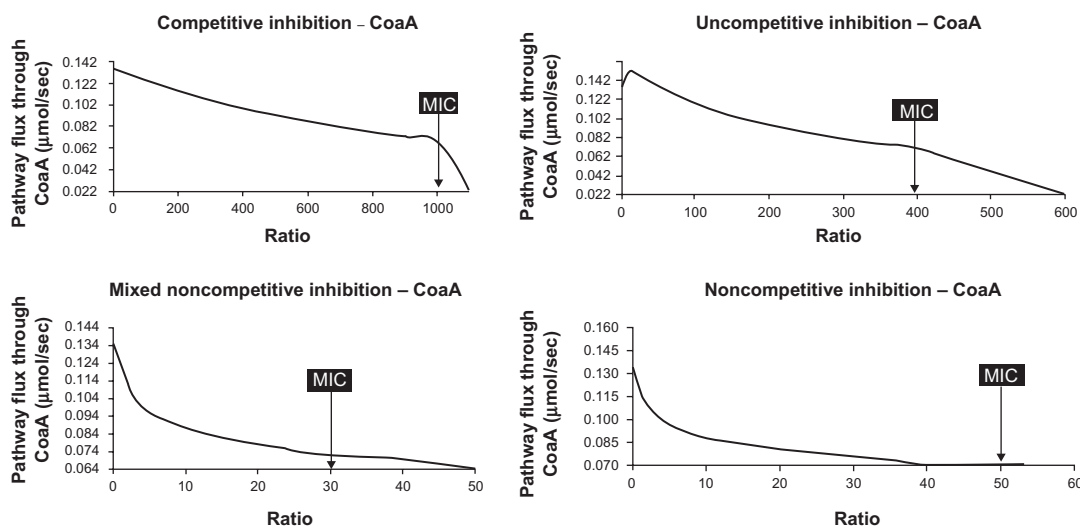


Figure 7 Various modes of inhibition of pantothenate kinase and resultant flux through the pathway. Effect of $[I]/K_i$ ratio on the flux of CoA biosynthetic pathway. Preferred mode of inhibition is the one that affects pathway flux at a lesser ratio of $[I]/K_i$. Predicted $[I]/K_i$ ratio required to reduce the CoA pathway flux below a critical value of ~ 0.07 μmol/sec indicated as Minimum Inhibitory Concentration (MIC) was 1000, 400, 30, and 50 for competitive, uncompetitive, mixed, and pure noncompetitive modes of inhibition respectively.

for CoA levels to drop below a critical level of 5%. This could in turn imply that the cells might require an exposure to CoA inhibitors for more than five generations for an effective growth inhibition.

Pantothenate biosynthetic pathway and its influence on CoA activity

Valine and L-aspartate are the precursors for pantothenate synthesis in bacteria wherein the gene product of *panC* catalyzes the conversion of beta-alanine to pantothenate. The *panCD* knockout strain of *M. bovis* BCG was reported to grow in vitro with pantothenate supplementation and its growth rate was proportional to a pantothenate concentration of up to 10 µg/mL or 42 µM.¹⁹ Similarly, a virtual phenotype for *panC* knockout mutant could be demonstrated in this model wherein both steady state CoA levels and growth rate were proportional to a pantothenate concentration of up to 1 µM (Figure 8A and B). The lower concentration of pantothenate required to sustain normal growth on this platform could be due to the fact that 1 µM is simulated under intracellular milieu whereas 42 µM is present in the experimental growth medium.

Since poor growth of *panC* knockout under suboptimal pantothenate levels (<1 µM) was due to limiting levels of CoA, we wanted to test if the cell becomes more vulnerable to CoA inhibition under this condition. As predicted, the extent of enzyme inhibition required for growth arrest declined from 99% under normal conditions for a wild type strain to 70% for *panC* knockout (Figure 8C). It can be postulated that due to increased susceptibility to CoA inhibition, the pantothenate auxotroph could be used for screening CoA enzyme inhibitors for their antibacterial activity.

Branched chain amino acid biosynthesis

The aceto-hydroxyacid synthase (AHAS) class of enzymes catalyzes the first reaction in the biosynthetic pathway of branched chain amino acids leucine, isoleucine, and valine. AHAS I and III isozymes catalyze conversion of 2 pyruvate molecules into alpha-acetolactate for valine and leucine biosynthesis and 2 alpha-ketobuturate molecules into alpha-aceto-hydroxybutyrate for isoleucine biosynthesis. Either AHAS I or AHAS III can support growth of *E. coli* in minimal media containing glucose as C-source whereas AHAS I alone has been shown to be essential when acetate is used as the sole source of carbon.²⁰ On this platform, an auxotrophic phenotype was observed for the double knockout of AHAS I and III on glucose as well as acetate as C-source, wherein supplementation of all three amino acids could relieve growth inhibition (Figure 9A). Though the levels of isoleucine and valine started

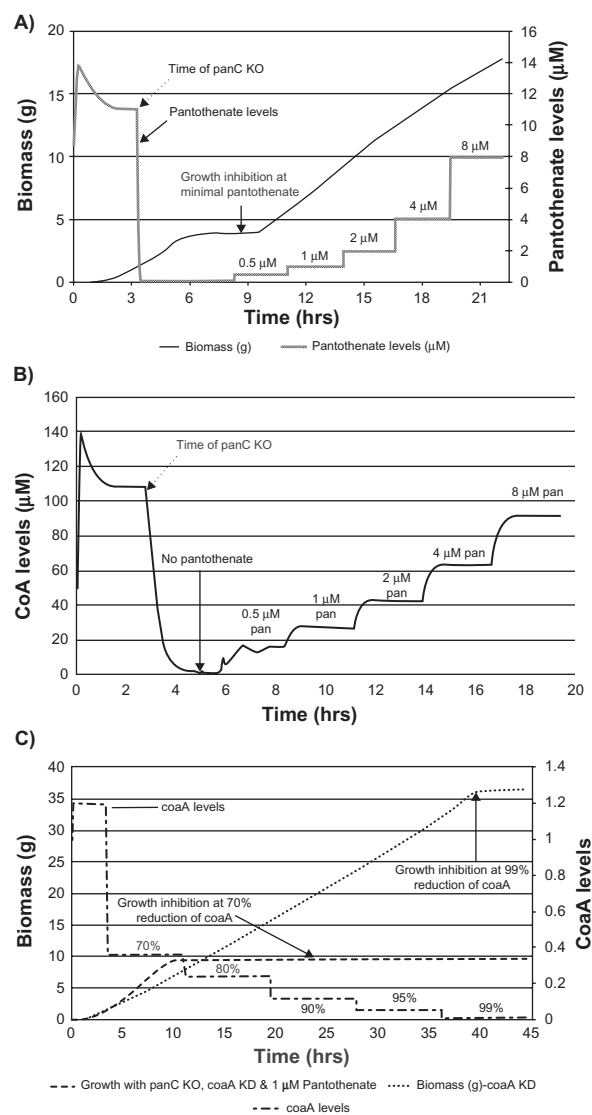


Figure 8 Growth profile and CoA levels in case of *panC* knockout (KO) with pantothenate supplementation and effect of *coaA* knockdown under these conditions. Effect of pantothenate supplementation (0.5, 1, 2, 4, 8 µM) on growth profile of *panC* knockout mutant of *E. coli* (A), CoA levels (B), and on growth profile of double mutant with *panC* knockout and *coaA* knockdown (percentage values indicate percentage knockdown.) (C). *panC* knockout results in pantothenate auxotrophy where normal growth was restored at 1 µM pantothenate (A). Steady state CoA levels in *panC* knockout mutant increased in proportion to the amount of pantothenate supplied (B). In a wild type strain, growth inhibition was observed only after 99% knockdown of *coaA* whereas in the case of *panC* knockout grown in the presence of 1 µM pantothenate, 70% knockdown of *coaA* was sufficient to cause growth inhibition (C).

declining immediately after knockout, leucine was found to accumulate for a short period of time (Figure 9B). This was due to higher flux of 2-oxoisovalerate to 2-isopropylmalate through *LeuA* at the branchpoint of pathway for valine biosynthesis. This was confirmed by simultaneous knockout of *leuA* along with AHAS I and III where leucine accumulation was not observed (Figure 9C).

To evaluate the utility of this platform in other bacterial species like mycobacteria, the effect of a known AHAS inhibitor, flazasulfuron, on intracellular levels of leucine,

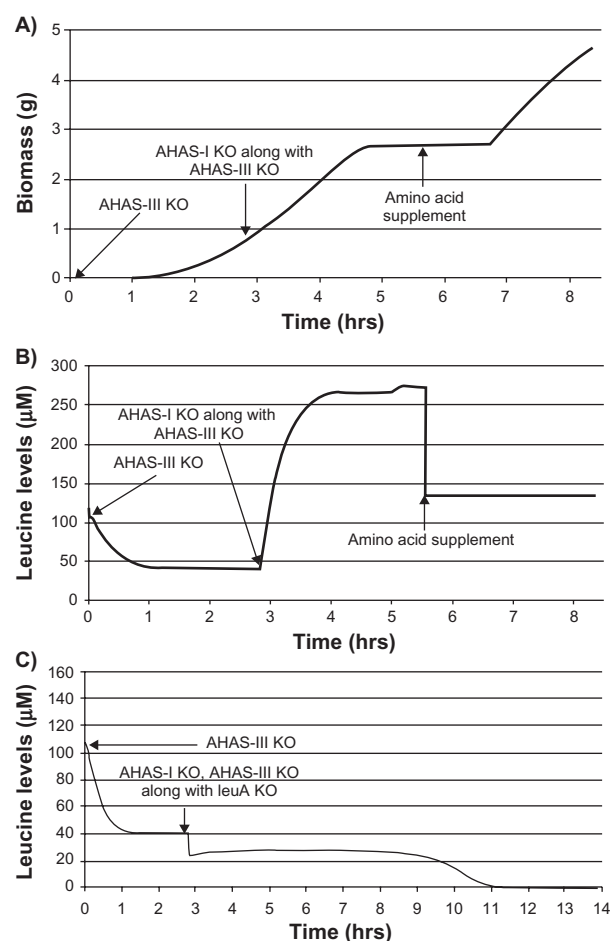


Figure 9 Effect of AHAS I, AHAS III knockout (KO) on growth and amino acid levels. Growth profile (A) of AHAS III knockout followed by AHAS I and III double knockout with and without isoleucine 30 μ M, leucine 135 μ M, and valine 200 μ M (ILV) supplementation. Auxotrophic growth inhibition observed in the case of AHAS I and III double knockout mutant could be reversed in the presence of ILV supplementation. Leucine accumulation was observed in the case of AHAS I/III double knockout (B) whereas it was absent when *leuA* was knocked out in addition to AHAS I and III (C).

isoleucine, and valine in *M. bovis* BCG, a surrogate for *M. tuberculosis*, was experimentally validated. Following exposure to flazasulfuron, there was a reduction in the levels of leucine, isoleucine, and valine compared with untreated control (Table 4). This observation thus confirmed and experimentally validated the predictions of the platform.

Discussion

Apart from the basic understanding of how the “tide and ebb” of metabolite flow is related to growth and death of bacteria, one of the major thrusts for carrying out dynamic modeling is to identify vulnerable drug targets. Though genome scale metabolic reconstruction has been attempted in silico for various organisms and more extensively so for *E. coli*,^{21,22} it is difficult to incorporate enzyme kinetic parameters into these networks as many of these values are not known and

Table 4 Experimental validation of acetolactate synthase – inhibition

Amino acid	Relative peak area – fold reduction	
	Extract (untreated)	Extract (flazasulfuron treated)
Valine	1	6.2
Isoleucine	1	2.68
Leucine	1	2.62

Notes: Levels of valine, leucine, and isoleucine following HPLC-based analysis of extracts of *M. bovis* BCG exposed to 8 μ g/mL flazasulfuron. HPLC conditions: For the chromatography a C18 column (LUNA) was used at a flow rate of 1.0 mL/minute and the gradient conditions were as follows: 10%–53% B in 24 minutes, 53%–100% B in 5 minutes, and 100%–10% B in 5 minutes. The amino acids were monitored at 254 nm. The composition of the 2 buffers was as follows: buffer A – 140 mM sodium acetate containing 0.5 mL/L triethylamine, pH adjusted to 6.35 with acetic acid; buffer B – 60% acetonitrile.

the computational stability of such an operation is yet to be evaluated. On the other hand, individual pathways like the TCA cycle and the glyoxylate shunt have been simulated using in vitro kinetic parameters and used to derive valid correlation between target inhibition and intracellular metabolite concentration.²³ We have attempted simulating a network of eight major pathways including the central carbon metabolism so that the effect of C-source on target vulnerability could be assessed.

Vulnerability can vary a lot depending upon the extent of cellular damage caused by the inhibition of a particular target. For example, only partial inhibition of DNA gyrase activity by fluoroquinolones results in cell death through induction of reactive oxygen species.^{5,24} In contrast, even 97% inhibition of the essential enzyme encoded by *pyrG* does not inhibit growth in *Lactococcus lactis*.²⁵ In order to evaluate the vulnerability of a target, one would have to gradually reduce the level of target gene expression and simultaneously monitor the concomitant effect on bacterial growth. The method described here is well suited to predict and generate this critical information. Enzymes in the CoA biosynthetic pathway were evaluated for vulnerability using this platform. Predicted requirement of >95% enzyme inhibition sustained over 4 to 5 generations may pose a challenge in translating enzyme IC₅₀s against CoaA, CoaD, and CoaE enzymes into MICs, especially against slow-growing bacteria like *M. tuberculosis*.

As the extent of inhibition depends on the nature of inhibition (competitive, uncompetitive, mixed), the current technology can also be exploited to choose the most effective class of inhibitors and, to a certain extent, reduce the chances of failure in translating nanomolar enzyme potencies into MICs. It has long been understood that some competitive inhibitors fail to inhibit the target enzyme within the cellular milieu due to substrate build up – a phenomenon described as metabolic resistance.²⁶ The present technology would be

able to depict such events, a valuable addition that would aid medicinal chemists in designing good inhibitors. In this platform, preference for the mixed mode of CoA inhibition to achieve MICs at a lower inhibitor concentration was clearly predicted.

The central carbon metabolism and most of the auxiliary pathways that feed in and out of the system are generally conserved across the bacterial kingdom. However the differences that arise are in the values of kinetic parameters or in the number of orthologs coding for the same enzyme across species. Thus to migrate from one organism to another we need to do a correction of the kinetic parameters and align the system with its specific isoforms. If the major isoform is conserved across bacterial species, this *E. coli* platform could even be applied to those as distant as *M. tuberculosis*. Cross-species applicability of this *E. coli* platform was tested by comparing predictions made on pathways like branched chain amino acid/pantothenate/CoA biosynthesis with the experimental data generated using a mycobacterial species. Genes coding for 3 isoforms of AHAS (I, II and III) have been reported in *E. coli*. The *ilvB1* gene codes for the major AHAS I activity whereas *ilvG* coding for AHAS II is not expressed in *E. coli* K-12. On the other hand, the *M. tuberculosis* genome contains 4 genes (*ilvB1*, *B2*, *G* and *X*) coding for large catalytic subunit of AHAS, whereas only 1 gene (*ilvN* or *ilvH*) codes for the smaller regulatory subunit of AHAS I. Predicted depletion of leucine, isoleucine, and valine following the virtual knockout of AHAS I was experimentally proven in *M. bovis* BCG using flazasulfuron, a known inhibitor of AHAS enzyme. Similarly, simulations done with the *panC* knockout aligned well with the experimental data reported for *M. bovis* BCG. The results indicated that a hybrid platform could give a satisfactory prediction where the major kinetic parameters were retained from *E. coli* and only minor differences in isoforms were incorporated from mycobacteria.

Conclusions

A network of 8 major metabolic pathways in *E. coli* was successfully modeled and used for assessing target vulnerability, desirable biochemical mode of enzyme inhibition to get antibacterial activity, and to predict metabolite profiles upon target inhibition as a marker for studying the mode of action. Assessment of vulnerability and desirable mode of enzyme inhibition was illustrated using CoA biosynthetic pathway whereas change in branched chain amino acid levels illustrated its application in finding suitable metabolite markers following target inhibition. The emphasis behind this approach has been to address target “equity” beyond “essentiality”, a parameter long

considered critical for its inclusion as an optimal candidate for designing drugs. The added feature that makes this simulation platform unique is its flexibility to incorporate different kinetic parameters or metabolite concentrations likely to be present either due to presence of alternative isoforms in different microorganisms, varied physiological environments, or changes in the intracellular milieu following treatment with various types of inhibitors. Our current pursuit is to build a kinetic in silico platform for *M. tuberculosis* that will include pathways unique to this pathogen especially those involved in cell wall biosynthesis. In addition, simulations to identify vulnerable targets in other druggable pathways in *M. tuberculosis* including energy metabolism, replication, transcription, and translation will also be run. This will lead to the construction of an integrated network of all pathways with the annotated essential genes from mycobacteria in this platform. Another advantage offered by this hybrid platform is its utilization to predict across unrelated bacteria the consequences of inhibition by various agents, provided they share and retain closely related target enzyme isoforms. In such cases, the simulation can be directly extrapolated and this was shown, albeit qualitatively, when the predicted modulation of levels of branched chain amino acids in flazasulfuron-exposed *E. coli* could be verified experimentally and their actual levels confirmed in the *M. tuberculosis* surrogate, *M. bovis* BCG. Studies reported here have also demonstrated the feasibility of measuring the vulnerability of a few genes in *E. coli*. A follow-up re-evaluation of the same targets in mycobacteria by simulating a stepwise gradient of knockdown analysis will be an interesting study to pursue. Since mycobacterium switches its carbon utilization from C6 to C2 C-source while transiting from extracellular to intracellular mode of survival, a major highlight of this model would be its capability to simulate this biological plasticity. The creation of a kinetic model of the size and complexity described here is a new advancement in the field of systems biology. We invite questions, which can be verified by experimental observations thereby shifting this conceptually “impossible” problem into the realm of experimental possibility. In short, this will be a visualization tool that will predict target vulnerability and its impact on cellular viability, consequent on blockage of important pathways either through genetic or chemical means tested under varied conditions.

Materials and methods

Model construction

Eight pathways in *E. coli* including glycolysis, pentose phosphate shunt, TCA cycle, fatty-acid metabolism, branched-chain amino acid synthesis, and CoA synthesis were

modeled on this platform (Figure 1). These pathways were integrated with each other and the end products were assimilated into macromolecules such as DNA, RNA, proteins, and lipids, as per the known stoichiometry.²⁷ *E. coli* growth, represented as a combined mass of macromolecules mentioned above, was simulated on glucose (C6) or acetate (C2) as C-source under aerobic growth conditions. A typical simulation starts with zero biomass and an increase in the same is indicative of cell growth. Gene regulation through various metabolites and regulatory proteins as per the C-source was included but the mechanism of regulation of over expression of regulatory proteins was not considered. The static map representation for each pathway and the operon information was adopted from the published literature.²⁸ This platform was built as a dynamic model with each reaction represented by an ordinary differential equation so that it could predict the quantitative effects of perturbation in any pathway on all the reactions included on this platform. The key aspects of this model are qualitatively described in this section, with important equations and mechanisms tabulated in Table S3.

Central carbon metabolism was modeled using glycolysis coupled to TCA cycle along with the glyoxylate shunt to accommodate acetate as an alternative C-source. Important regulatory mechanisms such as regulation of enzyme activity of phosphofructokinase (*PfkA*, *PfkB*) by ATP, regulation of isocitrate lyase (*aceA*) gene expression and enzymatic activity by pyruvate, glyoxylate, and succinate were taken into account. Pentose phosphate pathway and the Entner–Duodoroff pathway were modeled for generating pentose sugars as nucleic acid precursors and glycolytic intermediates, respectively. Metabolites such as ribose 5-phosphate and pyruvate were used for the biosynthesis of nucleotides and peptidoglycan/protein respectively. Fatty acid metabolism was modeled to supply C14, C16, and C18 derivatives for the synthesis of membrane lipids. Feedback inhibition of acetyl-CoA carboxylases (*AccABCD*) and beta-ketoacyl-ACP synthase (*FabH*) through fatty-acyl-ACPs was built into the regulation of fatty acid synthesis.^{29,30} Synthesis of branched chain amino acids (BCAA) such as leucine, isoleucine, and valine was regulated by stringent feedback inhibition and using different isoforms.³¹ Out of 3 isoforms of acetohydroxybutanoate synthase (AHAS I, AHAS II, AHAS III), AHAS II flux was not considered as it was reported to be nonfunctional in *E. coli*.³² CoA biosynthesis was linked to BCAA synthesis through 2-ketoisovalerate which was used as a precursor of pantothenate. Pantothenate was converted to CoA through a series of 4 reactions catalyzed by gene products of *coaA*,

coaB/C, *coaD*, and *coaE*. CoA was utilized as a major cofactor, an acyl group donor during protein and fatty acid biosynthesis. In addition, feedback regulation of CoaA and CoaD by CoA was incorporated. Considering the limits of this platform, some of the precursors, which were not synthesized on this platform, were supplied externally at the required stoichiometry. Metabolites produced in this model as well those supplied externally were incorporated into macromolecules required for the cell growth and the excess products were removed to avoid their undesirable effects on the modeled enzyme activities.

Model assumptions

Beyer et al in their studies on yeast, reported strong correlation between mRNA and protein levels in modules such as “energy”, “metabolism”, hinting at the possibility of strongly synchronized regulation of expression within functionally homogenous modules.³³ Similarly, correlation between overall mRNA and protein abundance in *E. coli* using codon adaptation index as a measure of gene expressivity was reported earlier.³⁴ Therefore relative enzyme concentrations on this platform were normalized using mRNA profiles reported under various growth conditions of *E. coli*. The platform was built to model growth of *E. coli* using glucose or acetate as C-source. Nitrogen source, oxygen, and other nutrients such as metal ions were externally provided in abundance. In reactions where one of the substrates was not produced on the platform, for example, β -alanine in the reaction catalyzed by pantoate β -alanine ligase, it was provided externally at the concentration reported.³⁵ Generation of ATP using proton motive force was not considered but the generation of ATP through reducing equivalents was incorporated. Total concentration of ATP, ADP (adenosine diphosphate), and AMP (adenosine monophosphate) pool was kept constant by incorporating interconversion of these forms through adenylate kinase-catalyzed reaction. The stoichiometry of ATP produced during electron transport through NDH-1, NDH-2, and cytochrome ‘b_o’ was incorporated assuming a constant high energetic efficiency.³⁶ While interpreting flux distribution under various test conditions, the relative values of flux or metabolite concentration were compared with reported values. As data for in vitro enzyme assays may not always correlate with in vivo conditions, the simulation time had no relation to the actual time required for cell growth.

Model alignment and validation

The Cellworks proprietary technology, iC-PHYS™, has the ability to solve systems comprising an unlimited number

of simultaneous ODEs.³⁷ It has been tested for systems of about 4000 ODEs. The integrity of the iC-PHYS™ was corroborated by comparing its performance with analytical solutions obtained at various time points in a concentration decay experiment. Further, comparison was carried out between the performance of iC-PHYS™ and Cell Designer 4.0.1^{38,39} for time-dependent change in the concentration of 2 species within the MAPK system,⁴⁰ an oscillatory signaling cascade. The correlation observed between iC-PHYS™ and Cell Designer 4.0.1 was found to be 0.98.

The iC-PHYS™ engine represents a reaction in a given pathway as a kinetic equation capturing the mechanistic data of an enzyme. Further inputs are in the form of kinetic parameters after which concentration of modeled species and other variables are linked through appropriate ODEs. Thus, iC-PHYS™ consists of a 3-tier architecture (Figure 10), a computational back plane at the foundation level which solves these differential equations, and outputs data in the form of reports and plots whereas the middle layer comprises a static pathway map linked to in vitro enzymatic data and in vivo fluxes. With these 2 layers together forming a background platform, the user interface has a viewer layer where the growth profiles as a result of simulation can be visualized and analyzed. Change of the fluxes, and metabolite and enzyme concentration with time can also be monitored.

Creation of the platform started with the computational representation of a static map of the pathway to be modeled. In instances of inconsistent or unknown enzyme kinetic parameters, a trial and error method of optimization was followed to attain physiological enzyme behavior. The kinetic parameters (eg, rate constants [K_f or K_r], K_m, V_{max} [V_f]), concentrations of the substrates and products, reaction equation showing the stoichiometry of substrates and products participating in the specific biochemical reaction, flux equation or kinetic equation for the individual reaction, and compartment (cytosol or membrane or pseudo) where the reaction takes place are provided in the supplementary PDF document (Model equations and parameters). All the 448 reactions used in this platform are described in this document. After alignment, the kinetics of the reaction were frozen and validated against various experimental results in literature. All pathway modules were thus aligned for physiological effects and then validated against published information and/or live experimental data. A thorough qualification of standalone models with respect to biological accuracy ensured physiological behavior when

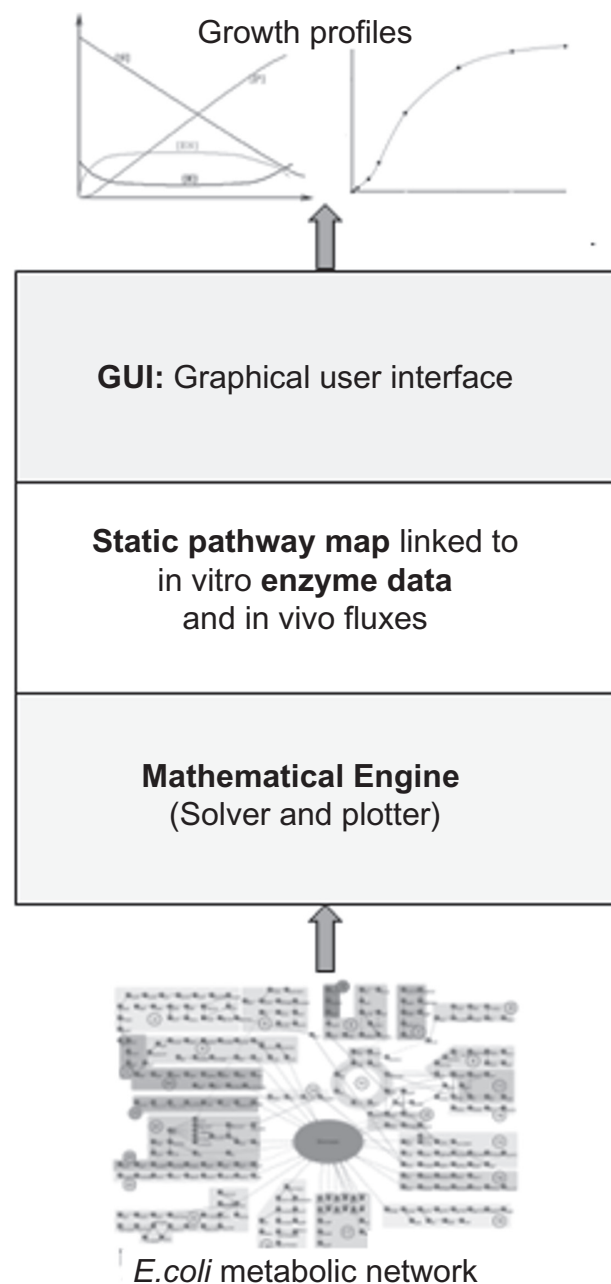


Figure 10 Schematic representation of the iC-PHYS™ engine with a 3-tier structure. The mathematical engine, comprising the solver and the plotter, forms the foundation of iC-PHYS™. The interconnected *E. coli* map with relevant kinetic parameters and equations forms the secondary layer, while the graphical user interface (GUI) forms the uppermost layer. The user manipulates and generates data by using the GUI.

assessed as closed systems. Individual pathway modules were then integrated wherein kinetic parameters were aligned wherever necessary by following the optimization method described above. Thus the complete platform was aligned with training data sets in the form of experimental results reported in the literature so as to ensure reliability in predicted values. The rate of glucose utilization and

the flux distribution on the platform were aligned to the experimentally reported values.^{34,41} The comparison of relative flux distribution in *E. coli* grown in a continuous culture mode with that simulated on the platform is given in Table S1.

The enzyme levels on the platform were aligned to the microarray profiles generated using *E. coli* MG1655 grown on a glucose-containing minimal medium.⁴² The microarray data were extracted from the NCBI GEO database and normalized against the gene *panE* that was expressed at similar levels on glucose as well as acetate as a C-source. This method was adopted to reduce the intensities to a smaller magnitude, thereby reducing the ODE solver complexities associated with numbers of large magnitude.

Generic simulation procedure

All the simulations in this *E. coli* platform were done using the iC-PHYSTM graphical user interface (GUI). The iC-PHYSTM GUI grants the user the option to set the maximum biological time of the simulation, specify the C-source, and the mode (continuous or batch supply of C-source) for a particular experiment. Different virtual experiments could be conducted on this platform. For example, *aceA* knockout was tested for its effect on fluxes in the TCA cycle and the glyoxylate shunt. The simulation was carried out for a total time of 48,000 seconds under 4 different conditions of 12,000 seconds each. The first 2 conditions were set up to simulate the growth of wild type *E. coli* using a continuous supply of glucose (670 μ M) followed by acetate (2010 μ M). The next 2 conditions were set up to simulate the growth of *aceA* knockout mutant under similar growth conditions to that of wild type. Similarly, the effect of a specific percentage knockdown or overexpression of a particular enzyme or enzymes on the growth of *E. coli* cell was simulated. For example, *coaA*, *coaD*, and *coaE* were knocked down by different percentages to assess the vulnerability of cell growth to inhibition of these targets. Concentration of a desired metabolite could be altered to study the effect of that metabolite on cell growth. For example, the auxotrophy phenotype for the AHAS I/III knockout was tested by supplementing leucine, isoleucine, and valine at fixed concentrations. In such simulations, the concentration of a metabolite generated by the platform under knockout or knockdown conditions was changed to a fixed value in the second stage of supplementation. This procedure could also be employed to check the effect of variation in enzyme kinetic parameters in the presence of external inhibitors. For example, effect of CoaA inhibitors

with different [I]/Ki ratio and various MOI was simulated to examine their effect on cell growth.

Experimental validation of predictions made using this platform

Intracellular levels of branched chain amino acids were estimated after subjecting whole cells of *M. bovis* BCG to a suitable extraction procedure⁴³ followed by detection and analysis by HPLC. Flazasulfuron, a reported AHAS inhibitor⁴⁴ with an MIC of 2 μ g/mL against *M. bovis* BCG, was tested for its effect on intracellular levels of isoleucine, leucine, and valine. *M. bovis* BCG was grown in roller bottles in Middle Brook 7H9 (0.05% Tween and ADC) at 37°C until OD₆₀₀ reached 0.5. The bacterial cells were exposed to the inhibitor and re-incubated at 37°C for 4 hours. The treated cultures were harvested and washed with phosphate buffered saline. The cell pellets were resuspended in chilled 0.6 M perchloric acid, vigorously mixed, and left on ice for 30 minutes. These acid extracts were neutralized using 0.6 M KOH, recentrifuged, and the supernatant vacuum was dried and then reconstituted in water for derivatization⁴⁵ prior to HPLC analysis. These extracts were resuspended in derivatization buffer containing 50 μ L of PITC (phenylisothiocyanate), 350 μ L ethanol, 50 μ L triethylamine, and 50 μ L water, incubated for 30 minutes at 25°C, and dried in vacuum again. All samples were resuspended in buffer A (140 mM sodium acetate containing 0.5 mL triethylamine/L, pH adjusted to 6.35 with acetic acid) containing 10% acetonitrile prior to injection into HPLC column (C18 LUNA). Gradient used was buffer A to B (60% acetonitrile): 10% to 53% B in 24 minutes, 53% to 100% B in 5 minutes, 100% to 10% B in 5 minutes, and the finally back to 10% B in 5 minutes at a flow rate of 1 mL/min. Derivatized amino acids were monitored for absorbance at 254 nm.

Authors' contribution

Aditya Barve, Ansu Kumar and Shireen Vali designed, constructed and validated the *E. coli* computational platform at the Cellworks site. Various simulations carried out by Aditya Barve and Ansu Kumar at Cellworks were reconfirmed by Anvita Gupta and Suresh Solapure at AstraZeneca India. The design and formulation for simulation were carried out by Suresh Solapure, Vasanthi Ramachandran, Kothandaraman Seshadri and Santanu Datta. The experimental validations were carried out by Suresh Solapure and Vasanthi Ramachandran. After contributions from all the contributors, the manuscript was written by Aditya Barve, Suresh Solapure, Vasanthi Ramachandran, Kothandaraman Seshadri and

Santanu Datta. All the authors read and approved the final manuscript.

Acknowledgment

We are indebted to Anand Kumar and Umender Sharma for critically reviewing the manuscript. The authors would like to thank Asha Balakrishnan for carrying out the amino acid analysis and Tanmay Banerjee for the microarray data input into the platform.

Disclosure

The authors disclose no conflicts of interest for this work.

References

- Chan PF, Holmes DJ, Payne DJ. Finding the gems using genomic discovery: antibacterial drug discovery strategies – the successes and the challenges. *Drug Discov Today Ther Strateg.* 2004;1(4):519–527.
- Payne DJ, Gwynn MN, Holmes DJ, Pompliano DL. Drugs for bad bugs: confronting the challenges of antibacterial discovery. *Nat Rev Drug Discov.* 2007;6(1):29–40.
- Black MT, Bruton G. Inhibitors of bacterial signal peptidases. *Curr Pharm Des.* 1998;4(2):133–154.
- Eisenthal R, Cornish-Bowden A. Prospects for antiparasitic drugs. The case of *Trypanosoma brucei*, the causative agent of African sleeping sickness. *J Biol Chem.* 1998;273(10):5500–5505.
- Kohanski MA, Dwyer DJ, Hayete B, Lawrence CA, Collins JJ. A common mechanism of cellular death induced by bactericidal antibiotics. *Cell.* 2007;130(5):797–810.
- Kaur P, Agarwal S, Datta S. Delineating bacteriostatic and bactericidal targets in mycobacteria using IPTG inducible antisense expression. *PLoS One.* 2009;4(6):e5923.
- Datta S. Understanding the characteristics of a good anti-infective drug target. *J Parasitic Dis.* 1999;23:139–140.
- Fong SS, Nanchen A, Palsson BO, Sauer U. Latent pathway activation and increased pathway capacity enable *Escherichia coli* adaptation to loss of key metabolic enzymes. *J Biol Chem.* 2006;281(12):8024–8033.
- Walsh K, Koshland DE Jr. Branch point control by the phosphorylation state of isocitrate dehydrogenase. A quantitative examination of fluxes during a regulatory transition. *J Biol Chem.* 1985;260(14):8430–8437.
- Walsh K, Koshland DE Jr. Determination of flux through the branch point of two metabolic cycles. The tricarboxylic acid cycle and the glyoxylate shunt. *J Biol Chem.* 1984;259(15):9646–9654.
- Holms H. Flux analysis and control of the central metabolic pathways in *Escherichia coli*. *FEMS Microbiol Rev.* 1996;19(2):85–116.
- Wendisch VF, de Graaf AA, Sahm H, Eikmanns BJ. Quantitative determination of metabolic fluxes during coutilization of two carbon sources: comparative analyses with *Corynebacterium glutamicum* during growth on acetate and/or glucose. *J Bacteriol.* 2000;182(11):3088–3096.
- Tweeddale H, Notley-McRobb L, Ferenci T. Effect of slow growth on metabolism of *Escherichia coli*, as revealed by global metabolite pool (“metabolome”) analysis. *J Bacteriol.* 1998;180(19):5109–5116.
- Purvis JE, Yomano LP, Ingram LO. Enhanced trehalose production improves growth of *Escherichia coli* under osmotic stress. *Appl Environ Microbiol.* 2005;71(7):3761–3769.
- Baba T, Ara T, Hasegawa M, et al. Construction of *Escherichia coli* K-12 in-frame, single-gene knockout mutants: the Keio collection. *Mol Syst Biol.* 2006;2:2006–2008.
- Chohnan S, Izawa H, Nishihara H, Takamura Y. Changes in size of intracellular pools of coenzyme A and its thioesters in *Escherichia coli* K-12 cells to various carbon sources and stresses. *Biosci Biotechnol Biochem.* 1998;62(6):1122–1128.
- Song WJ, Jackowski S. Cloning, sequencing, and expression of the pantothenate kinase (coaA) gene of *Escherichia coli*. *J Bacteriol.* 1992;174(20):6411–6417.
- Zhang YM, Frank MW, Virga KG, et al. Acyl carrier protein is a cellular target for the antibacterial action of the pantothenamide class of pantothenate antimetabolites. *J Biol Chem.* 2004;279(49):50969–50975.
- Tullius MV, Harth G, Maslesa-Galic S, Dillon BJ, Horwitz MA. A Replication-Limited Recombinant *Mycobacterium bovis* BCG vaccine against tuberculosis designed for human immunodeficiency virus-positive persons is safer and more efficacious than BCG. *Infect Immun.* 2008;76(11):5200–5214.
- Dailey FE, Cronan JE Jr. Acetohydroxy acid synthase I, a required enzyme for isoleucine and valine biosynthesis in *Escherichia coli* K-12 during growth on acetate as the sole carbon source. *J Bacteriol.* 1986;165(2):453–460.
- Feist AM, Henry CS, Reed JL, et al. A genome-scale metabolic reconstruction for *Escherichia coli* K-12 MG1655 that accounts for 1260 ORFs and thermodynamic information. *Mol Syst Biol.* 2007;3:121.
- Feist AM, Palsson BO. The growing scope of applications of genome-scale metabolic reconstructions using *Escherichia coli*. *Nat Biotechnol.* 2008;26(6):659–667.
- Singh VK, Ghosh I. Kinetic modeling of tricarboxylic acid cycle and glyoxylate bypass in *Mycobacterium tuberculosis*, and its application to assessment of drug targets. *Theor Biol Med Model.* 2006;3:27.
- Dwyer DJ, Kohanski MA, Hayete B, Collins JJ. Gyrase inhibitors induce an oxidative damage cellular death pathway in *Escherichia coli*. *Mol Syst Biol.* 2007;3:91.
- Jorgensen CM, Hammer K, Jensen PR, Martinussen J. Expression of the pyrG gene determines the pool sizes of CTP and dCTP in *Lactococcus lactis*. *Eur J Biochem.* 2004;271(12):2438–2445.
- Christopherson RI, Duggleby RG. Metabolic resistance: the protection of enzymes against drugs which are tight-binding inhibitors by the accumulation of substrate. *Eur J Biochem.* 1983;134(2):331–335.
- Ingraham JL NF. *Escherichia coli and Salmonella typhimurium: Cellular and Molecular Biology*. 1st edition. American Society for Microbiology Press; 1987.
- Karp PD, Keseler IM, Shearer A, et al. Multidimensional annotation of the *Escherichia coli* K-12 genome. *Nucleic Acids Res.* 2007;35(22):7577–7590.
- Davis MS, Cronan JE Jr. Inhibition of *Escherichia coli* acetyl coenzyme A carboxylase by acyl-acyl carrier protein. *J Bacteriol.* 2001;183(4):1499–1503.
- Heath RJ, Rock CO. Inhibition of beta-ketoacyl-acyl carrier protein synthase III (FabH) by acyl-acyl carrier protein in *Escherichia coli*. *J Biol Chem.* 1996;271(18):10996–11000.
- Umbarger HE. Amino acid biosynthesis and its regulation. *Annu Rev Biochem.* 1978;47:532–606.
- Favre R, Wiater A, Puppo S, Iaccarino M. Expression of a valine-resistant acetolactate synthase activity mediated by the ilvO and ilvG genes of *Escherichia coli* K-12. *Mol Gen Genet.* 1976;143(3):243–252.
- Beyer A, Hollunder J, Nasheuer HP, Wilhelm T. Post-transcriptional expression regulation in the yeast *Saccharomyces cerevisiae* on a genomic scale. *Mol Cell Proteomics.* 2004;3(11):1083–1092.
- Ishihama Y, Schmidt T, Rappsilber J, et al. Protein abundance profiling of the *Escherichia coli* cytosol. *BMC Genomics.* 2008;9:102.
- Ishii N, Nakahigashi K, Baba T, et al. Multiple high-throughput analyses monitor the response of *E. coli* to perturbations. *Science.* 2007;316(5824):593–597.
- D W. *The Physiology and Biochemistry of Prokaryotes*. 2nd edition. Oxford University Press, USA; 1999.
- Vali S, Chinta SJ, Peng J, et al. Insights into the effects of alpha-synuclein expression and proteasome inhibition on glutathione metabolism through a dynamic *in silico* model of Parkinson's disease: validation by cell culture data. *Free Radic Biol Med.* 2008;45(9):1290–1301.
- Funahashi A, Morohashi M, Kitano H, Tanimura N. CellDesigner: a process diagram editor for gene-regulatory and biochemical networks. *BIOILICO.* 2003;1(5):159–162.

39. Funahashi A, Matsuoka Y, Jouraku A, et al. CellDesigner 3.5: a versatile modeling tool for biochemical networks. *Proceedings of the IEEE*. 2008;96(8):1254–1265.
40. Kholodenko BN. Negative feedback and ultrasensitivity can bring about oscillations in the mitogen-activated protein kinase cascades. *Eur J Biochem*. 2000;267(6):1583–1588.
41. Peng L, Shimizu K. Global metabolic regulation analysis for Escherichia coli K-12 based on protein expression by 2-dimensional electrophoresis and enzyme activity measurement. *Appl Microbiol Biotechnol*. 2003; 61(2):163–178.
42. Liu M, Durfee T, Cabrera JE, et al. Global transcriptional programs reveal a carbon source foraging strategy by Escherichia coli. *J Biol Chem*. 2005;280(16):15921–15927.
43. Petranovic D, Mijakovic I. Photometric assay for measuring the intracellular concentration of branched-chain amino acids in bacteria. *J Microbiol Methods*. 2004;56(1):133–136.
44. LaRossa RA, Schloss JV. The sulfonyleurea herbicide sulfometuron methyl is an extremely potent and selective inhibitor of acetolactate synthase in Salmonella typhimurium. *J Biol Chem*. 1984;259(14): 8753–8757.
45. Heinrikson RL, Meredith SC. Amino acid analysis by reverse-phase high-performance liquid chromatography: precolumn derivatization with phenylisothiocyanate. *Anal Biochem*. 1984;136(1):65–74.

Advances and Applications in Bioinformatics and Chemistry

Dovepress

Publish your work in this journal

Advances and Applications in Bioinformatics and Chemistry is an international, peer-reviewed open-access journal that publishes articles in the following fields: Computational biomodelling; Bioinformatics; Computational genomics; Molecular modelling; Protein structure modelling and structural genomics; Systems Biology; Computational

Biochemistry; Computational Biophysics; Chemoinformatics and Drug Design; In silico ADME/Tox prediction. The manuscript management system is completely online and includes a very quick and fair peer-review system, which is all easy to use. Visit <http://www.dovepress.com/testimonials.php> to read real quotes from published authors.

Submit your manuscript here: <http://www.dovepress.com/advances-and-applications-in-bioinformatics-and-chemistry-journal>