

Integrative DNA Methylation and Gene Expression Analysis of Cognitive Behavioral Therapy Response in Children and Adolescents with Obsessive-Compulsive Disorder; a Pilot Study

Natalia Rodriguez^{1,*}
 Albert Martinez-Pinteño^{1,*}
 Ana Blázquez^{2,3}
 Ana Encarnación Ortiz^{2,3}
 Elena Moreno²
 Patricia Gassó^{1,3}
 Amalia Lafuente^{1,3,4}
 Luisa Lazaro²⁻⁵
 Sergi Mas^{1,3,4}

¹Department of Basic Clinical Practice, Pharmacology Unit, University of Barcelona, Barcelona, Spain;

²Department of Child and Adolescent Psychiatry and Psychology, Institute of Neurosciences, Hospital Clinic de Barcelona, Barcelona, Spain; ³Clinical and Experimental Neuroscience Area, The August Pi i Sunyer Biomedical Research Institute (IDIBAPS), Barcelona, Spain;

⁴G04 Group, Centro de Investigación Biomédica en Red de Salud Mental (CIBERSAM), Carlos III Health Institute, Madrid, Spain; ⁵Department of Medicine, University of Barcelona, Barcelona, Spain

*These authors contributed equally to this work

Correspondence: Sergi Mas
 Department of Basic Clinical Practice,
 Pharmacology Unit, University of
 Barcelona, Casanova 143, Barcelona,
 E-08036, Spain
 Tel +34934024526
 Fax +34934035881
 Email sergimash@ub.edu

Purpose: Here, we propose an integrative analysis of genome-wide methylation and gene expression to provide new insight into the biological mechanisms of Cognitive behavioral therapy (CBT) in pediatric obsessive-compulsive disorder (OCD).

Patients and Methods: Twelve children and adolescents with OCD receiving CBT for the first time were classified as responders or non-responders after eight weeks of CBT. Differentially methylated positions (DMPs) and gene co-expression modules were identified using specific R software packages. Correlations between the DMPs and gene co-expression modules were investigated.

Results: Two genes were enriched with significant DMPs ($\Delta\beta > \pm 0.2$, FDR-adjusted p-value < 0.05): *PIWIL1* and *MIR886*. The yellowgreen module of co-expressed genes was associated with CBT response (FDR-adjusted p-value = 0.0003). Significant correlations were observed between the yellowgreen module and the CpGs in *PIWIL1* and *MIR886* (p < 0.008). Patients showing hypermethylation in these CpGs presented an upregulation in the genes in the yellowgreen module.

Conclusion: Taken together, the preliminary results of this systems-level approach, despite the study limitations, provide evidence that the epigenetic regulation of ncRNAs could be a predictor of CBT response.

Limitations: The sample size limited the statistical power, and given that the study was hypothesis-driven, our results should be seen as preliminary.

Keywords: cognitive behavioral therapy, CBT, obsessive-compulsive disorder, OCD, Epigenetics, DNA methylation, gene expression

Introduction

Obsessive-compulsive disorder (OCD) is a serious and common mental disorder with an estimated prevalence of 1% to 3% in children and adolescents.¹ Pediatric OCD is associated with significant distress and marked interpersonal, academic, and occupational impairments,² which can have a detrimental impact on psychosocial development.³

Treatments for OCD include pharmacological approaches using selective serotonin reuptake inhibitors (SSRI) and psychological approaches involving cognitive behavioral

therapy (CBT). The recommended first-line treatment for pediatric OCD is CBT. It has been proven to be more effective than no intervention and while comparable to treatment with SSRIs, CBT has a lower risk-to-benefit ratio compared to medication and a higher acceptability among patients and their families.⁴ However, there is significant variability in how children and adolescents with OCD respond to CBT, with 39% of patients showing adequate remission of their symptoms.⁵ Similar variability is observed when patients with early-onset OCD are treated with SSRI monotherapy (22% remission rates) or when CBT is combined with an SSRI (54% remission rates).⁶

Clinical guidelines recommend CBT as the first-line treatment for patients with mild to moderate symptoms. It can be combined with an SSRI as the initial treatment in more severe cases or when there is no adequate response to CBT alone.^{7,8} Although the severity of OCD symptoms may help in guiding treatment selection, the observed variability in remission rates highlights the importance of identifying moderators and predictors of response to help clinicians optimize the initial treatment for a particular patient.

Several factors have been proposed as predictors of a poorer outcome to CBT in pediatric OCD, such as an older age, the severity of symptoms and impairment, co-morbidities and a family history of OCD.⁹ However, their importance and validity as predictors remain controversial. Genetic variants represent a potential source of predictors, with the study of such variants referred to as therapy genetics. The first evidence of the contribution of genetic variants to psychological therapy response came from candidate gene studies; however, these findings have proven to be difficult to replicate.^{10,11} Recently, genome-wide association studies (GWAS) on outcomes following psychological therapy were published for both children and adults with anxiety disorders.^{12,13} However, these studies were underpowered to detect the small effect size of single genetic variants with genome-wide significance.

Several investigations have explored the epigenetic process of DNA methylation and differential gene expression in treatment response. Early studies using candidate gene (*BDNF*, *NGF*, *FKBP5*, and *MAO-A*) approaches have demonstrated that changes in DNA methylation may underlie response to psychological therapies in a variety of disorders including OCD.^{14–21} A small number of studies have examined the role of gene expression and the response to psychological therapy: two studies using *FKBP5* as a candidate gene in post-traumatic stress disorder and two studies using genome-wide expression analysis in anxiety disorders.^{12,22–24}

Here, we performed a genome-wide methylation analysis using peripheral blood obtained after eight weeks of CBT from a cohort of children and adolescents with a diagnosis of OCD who were drug-naïve and never previously treated with psychological interventions. Furthermore, we integrated the methylation and gene expression profiles using samples from the same individuals. The main objective of the present study was to provide new insight into the biological mechanisms of CBT and to identify new candidate biomarkers of CBT response.

Materials and Methods

Subjects

Twelve children and adolescents aged between 8 and 16 years who were receiving CBT for the first time participated in the present study. None of the participants had been treated previously with antidepressants or other psychotropic drugs, or with psychological therapies. Patients were diagnosed using the Diagnostic and Statistical Manual of Mental Disorders-V (DSM-V).²⁵ The study was carried out at the Child and Adolescent Psychiatry and Psychology Service of the Institute of Neuroscience at the Hospital Clinic of Barcelona. The study was naturalistic and the treatment was established according to the Clinical Guidelines for the Treatment of Obsessive-Compulsive Disorder of the Child and Adolescent Psychiatry and Psychology Service. All procedures were approved by the Hospital Clínic ethics committee. Written informed consent was obtained from all the parents and verbal informed consent was given by all the participants following explanation of the procedures involved. All experiments were performed in accordance with relevant guidelines and regulations. This study was conducted in accordance with the Declaration of Helsinki.

Cognitive-behavioral therapy counseling consisted of one session that covered the psycho-educational aspects of OCD (nature of OCD, clinical characteristics and principles of behavior therapy) and twelve sessions (two sessions every week during the first month and a weekly session during the second month) based on exposure and response prevention.

Information on illness severity was obtained during the initial phase of the study using the *Children's Yale-Brown Obsessive Compulsive Scale* (CYBOCS).²⁶ The same scale was administered after 8 weeks of CBT. Treatment response was evaluated using the percentage of improvement as follows: $((\text{CYBOCS}_{8\text{weeks}} - \text{CYBOCS}_{\text{basal}}) / \text{CYBOCS}_{\text{basal}}) * 100$.

Patients were classified as responders or non-responders according to the percentage of improvement after 8 weeks of CBT. Responders were patients with an improvement > 35%, while non-responders were those with an improvement < 25%. Patients with an improvement > 25% and < 35% were classified as partial responders.²⁷

Biological Samples

Two blood samples from each participant were collected before the start of CBT: one in EDTA (BD Vacutainer K2EDTA tubes; Becton Dickinson, Franklin Lakes, New Jersey, USA) and another in PAXgene Blood RNA tubes (Qiagen, Valencia, CA). Genomic DNA was extracted using the MagNA Pure LC DNA Isolation Kit and a MagNA Pure LC 2.0 instrument (Roche Diagnostics GmbH, Mannheim, Germany). DNA concentration and quality were measured using a NanoDrop 2000 spectrophotometer (Thermo Fisher Scientific, Surrey, CA). Genome-wide DNA methylation was profiled at the CEGEN-PRB3-ISCI using the Illumina Infinium MethylationEPIC BeadChip Kit. Total RNA was isolated in accordance with the manufacturer's protocol (PAXgene Blood RNA kit). RNA quality and quantity were measured by an Agilent Bioanalyzer 2100 (Santa Clara, CA). 1 µg of purified RNA from each of the samples was submitted to the Kompetenzzentrum für Fluoreszenz Bioanalytik Microarray Technology (KFB, BioPark Regensburg GmbH, Regensburg, Germany) for labeling and hybridization using Human Genome U219 array plates (Affymetrix, Santa Clara, CA, USA), following the manufacturer's protocols.

Genome-Wide DNA Methylation Profiling

Raw intensity data (.IDAT) files were received and bioinformatics processes were conducted in house using the Chip Analysis Methylation Pipeline (*ChAMP*) Bioconductor package.²⁸ Raw IDAT files were used to load the data into the R environment with the *champ.load* function, which also allows for the probe QC and removal steps to occur simultaneously. Probes with weak signals ($p < 0.01$) ($n = 3103$), cross-reactive probes ($n = 11$), non-CpG probes ($n = 2952$), probes with < 3 beads in at least 5% of the samples per probe ($n = 10,683$), probes that bound to SNP sites ($n = 96,500$), and sex chromosome probes ($n = 61,734$) were all considered problematic for the accurate detection of downstream methylation. After removing these probes, 736,109 probes remained for downstream analysis. β values were then

normalized using the *champ.norm* function, specifically with the beta-mixture quartile method (BMIQ function). Cell counts were measured using the *champ.refbase* function. The following cells were counted: CD8+ T cells, CD4+ T cells, natural killer (NK) cells, B cells, monocytes, and granulocytes. Next, the singular value decomposition (SVD) method was performed by *champ.SVD* to assess the amount and significance of the technical batch components, along with any potential confounding variables (eg, sex, age, and cell count) in our dataset. Using the *champ.runCombat* function, Combat algorithms were applied to correct for slide and array (significant components detected by the SVD method). No effect of sex, age or cell count was detected.

After filtering, normalization, and the detection of batches and covariates, differentially methylated positions (DMPs) were identified using the *champ.DMP* function, which implements the limma package to calculate the p-value for differential methylation using a linear model (FDR-adjusted p-values < 0.05). An absolute value of the difference between the β -value medians ($\Delta\beta$) of responders and non-responders higher than 0.2 was set as the cut-off value to decrease the number of significant CpGs and identify sites with the more biologically relevant methylation differences.

Genome-Wide Expression Analysis and the WGCNA Procedure

Microarray data preprocessing was performed using the Babelomics 5 suite (<http://www.babelomics.org/>).²⁹ The data were standardized using robust multichip analysis. Multiple probes mapping to the same gene were merged using the average as the summary of the hybridization values. Co-expression modules were identified using the R software package for weighted gene co-expression network analysis (WGCNA).³⁰ The co-expression analysis involved constructing a matrix of pairwise correlations between all pairs of genes across all selected samples. Next, the matrix was raised to a soft-thresholding power ($\beta = 8$ in this study) to obtain an adjacency matrix. To identify modules of co-expressed genes, we constructed the topological overlap-based dissimilarity, which was then used as input to average linkage hierarchical clustering. This step resulted in a clustering tree (dendrogram) whose branches were identified for cutting based on their shape, using the dynamic tree-cutting algorithm. The above steps were performed using the automatic network construction and module detection function (*blockwiseModules* in WGCNA), with the following parameters: *minModuleSize* of 30, *reassignThreshold* of 0,

and *mergeCutHeight* of 0.25. The modules were then tested for their associations with the trait by correlating module eigengenes with trait measurements.

We then used ClueGO v2.1, a Cytoscape plug-in, to perform a gene set enrichment analysis, as described previously.³¹ Briefly, we selected the unstructured terms of biological processes from Gene Ontology (GO). Only terms with an adjusted p-value < 0.05 and experimental evidence were selected for analysis. Genes involved in significant modules were mapped to their enriched term based on the hypergeometric test (two-sided), with the p-value being corrected by the Benjamini-Hochberg method. ClueGO created a functional module network in which the different GO terms were clustered according to the strength of the association between the terms calculated using chance-corrected kappa statistics.

Statistical Analysis

Data were analyzed using the SPSS 22.0 software (IBM, Chicago, IL, USA). The normality of continuous variables was tested using the Kolmogorov–Smirnov and Shapiro–Wilk tests, while the equality of the variance between the groups was assessed using Levene’s test. Two-tailed p-values < 0.05 were considered to be of statistical significance. In genes enriched with DMPs significantly associated with CBT response ($\Delta\beta > 0.2$, FDR-adjusted p-values < 0.05), the β values of the most significant DMPs in each gene were tested for correlation, using Spearman’s rank correlation coefficient, with the eigengene values of the modules significantly associated with CBT response in the WGCNA.

Results

An overview of the study design is shown in Figure 1. Table 1 shows the demographic and clinical characteristics of the study participants. As can be observed, there were non-significant differences between the responders and non-responders for age, sex, symptom severity at baseline and family history of OCD. Although non-significant, a higher percentage of non-responders (100%) than responders (50%) presented co-morbidities.

Genome-Wide Methylation Analysis

We classified 55,149 probes as significant DMPs (FDR-adjusted p-values < 0.05). However, this included DMPs with very small differences in methylation between responders and non-responders. Therefore, a cut-off of $\Delta\beta > \pm 0.2$ was applied, which identified 89 DMPs with

methylation changes that were more likely to be biologically relevant (Supplementary Table 1).

The 89 significant CpGs mapped to 70 genes. Two of these genes were enriched with significant DMPs (FDR-adjusted p-value < 0.05, $\Delta\beta > \pm 0.2$) and were selected for subsequent analysis: *PIWIL1* and *MIR886*. *PIWIL1* was enriched with five CpGs that were significantly hypermethylated in the non-responders. These DMPs were upstream of the transcription start site (from +1500 to +200 bp), in a region that, according to the UCSC browser, includes a CpG island and a DNase hypersensitive site (Figure 2A). The most significant CpG in *PIWIL1* (cg13861644) is included in the Blood Brain DNA Methylation Comparison Tool (<https://epigenetics.essex.ac.uk/bloodbrain/>),³² showing a significant correlation (p < 0.05) between methylation levels in the blood and in the prefrontal cortex (r = 0.76), entorhinal cortex (r = 0.83), superior temporal gyrus (r = 0.77) and cerebellum (r = 0.73) (Supplementary Figure 1).

MIR886 was enriched with four DMPs that were significantly hypomethylated in the responders. These CpGs were upstream of the transcription start site (from +1500 to +200 bp), a region that, according to the UCSC browser, includes a promoter region enriched with H3K27AC marks in all the cell lines considered by ENCODE (Figure 2B). The four CpGs in *MIR886* are included in the Blood Brain DNA Methylation Comparison Tool, showing a significant correlation (p < 0.05) between methylation levels in the blood and in the prefrontal cortex (r > 0.89), entorhinal cortex (r = 0.95), superior temporal gyrus (r > 0.92) and cerebellum (r > 0.52) (Supplementary Figure 2).

Genome-Wide Expression Analysis

We applied WGCNA to genome-wide expression data, which identified 70 gene co-expression modules (Supplementary Figure 3). One module, the yellowgreen (197 genes), showed a significant correlation with CBT response (r = -0.85, FDR-corrected p-value = 0.0003). The yellowgreen module contained genes that were upregulated in non-responders to CBT (Figure 2C).

To explore the biological mechanism associated with the genes of the yellowgreen module, we performed a gene set enrichment analysis using the unstructured terms of biological processes from Gene Ontology (GO). We identified five clusters involving ten significant terms (Bonferroni-corrected p-value < 0.05) (Table 2) that were related to DNA replication, chemotaxis, hormone metabolism and catecholamine transport.

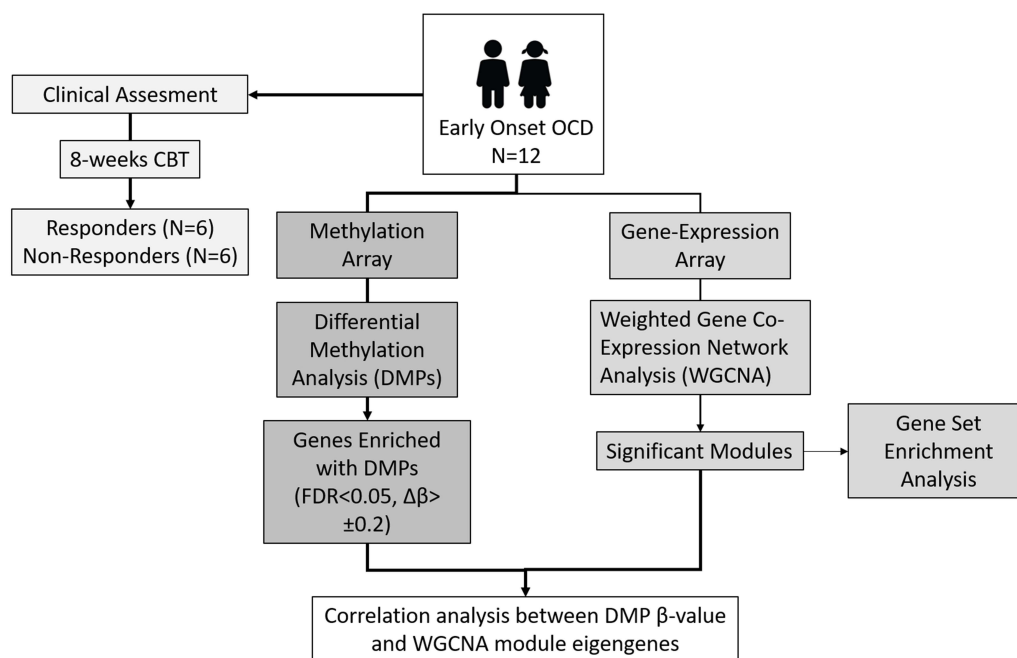


Figure 1 Overview of the study.

Integrative Analysis of Methylation and Gene Expression

We next investigated the possible relationship between the differences in DNA methylation between the responders and non-responders and the gene co-expression modules that were associated with CBT response. We analyzed the correlation between the β values of the most significant DMP in the *PIWIL1* and *MIR886* genes and the module

eigengene values. There were significant correlations between the yellowgreen module and the cg13861644 in *PIWIL1* ($r = 0.74$, $p = 0.005$) and the cg04481923 in *MIR886* ($r = 0.72$, $p = 0.008$). Patients showing higher methylation in these CpGs showed an upregulation of the genes in the yellowgreen module (Figure 2D and E).

We also analyzed the correlation between the β values of the most significant DMP in the *PIWIL1* and its

Table 1 Demographic and Clinical Characteristics of the Study Participants

	Non-Responders (n = 6)	Responders (n = 6)	Statistical Analysis, p-value
Age at baseline (mean \pm SD)	13.3 \pm 2.1	11.8 \pm 3.1	U = 13.5, p = 0.485
Gender (female) (n, %)	3/6 (50.0%)	3/6 (50.0%)	$\chi^2_7 = 0.0$, p = 1.0
Family history of psychiatric disease (n, %)	5/6 (83.3%)	5/6 (83.3%)	$\chi^2_1 = 0.0$, p = 1.0
Family history of OCD (n, %)	2/6 (33.3%)	1/6 (16.6%)	$\chi^2_1 = 0.0$, p = 1.0
Comorbid diagnoses (n, %)	6/6 (100.0%)	3/6 (50.0%)	$\chi^2_1 = 4.0$, p = 0.182
Anxiety disorders (n, %)	5/6 (83.3%)	0/6 (0.0%)	
Simple phobia (n, %)	0/6 (0.0%)	1/6 (16.6%)	
Anorexia nervosa (n, %)	0/6 (0.0%)	1/6 (16.6%)	
ADHD (n, %)	0/6 (0.0%)	1/6 (16.6%)	
Oppositional defiant disorder (n, %)	1/6 (16.6%)	0/6 (0.0%)	
CYBOCS at baseline (mean \pm SD)	21.3 \pm 7.0	19.8 \pm 4.0	U = 13.5, p = 0.485
CYBOCS at follow-up (mean \pm SD)	19.3 \pm 6.1	9.8 \pm 2.8	U = 4.0, p = 0.026
Percentage of CYBOCS improvement (mean \pm SD)	8.6 \pm 9.1	50.5 \pm 2.1	U = 36.0, p = 0.002

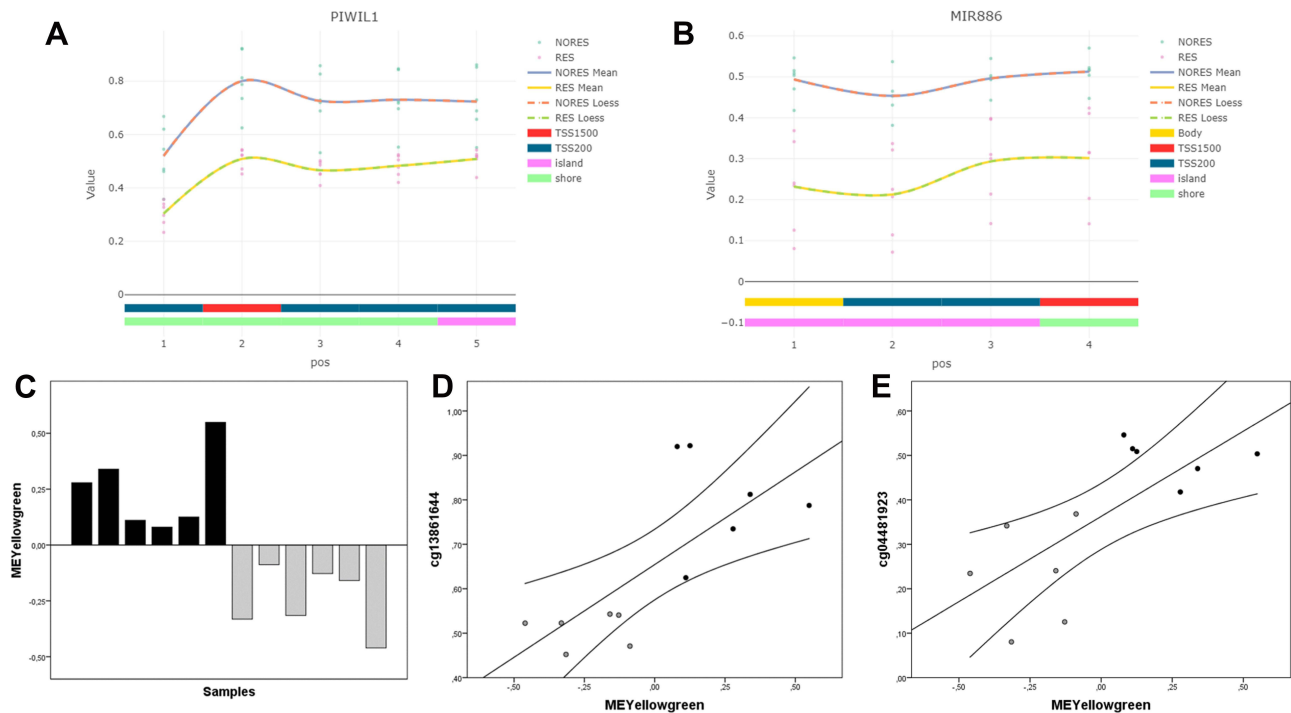


Figure 2 (A) Distribution of significant DMPs (FDR-adjusted p-value < 0.05, $\Delta\beta > \pm 0.2$) in the *PIWIL1* gene and methylation β values in responders and non-responders. (B) Distribution of significant DMPs (FDR-adjusted p-value < 0.05, $\Delta\beta > \pm 0.2$) in the *MIR886* gene and methylation β values in responders and non-responders. (C) Module eigengene values (y-axis) for the yellowgreen module in individual samples (x-axis). Black bars indicate non-responders, while gray bars indicate responders. (D) Scatter plots showing correlations between yellowgreen module eigengene values (x-axis) and methylation β values of the cg13861644 in *PIWIL1* (y-axis). Black points correspond to non-responders, while gray points correspond to responders. (E) Scatter plots showing correlations between yellowgreen module eigengene values (x-axis) and methylation β values of the cg04481923 in *MIR886* (y-axis). Black points correspond to non-responders, while gray points correspond to responders.

expression. The Human Genome U219 array plates only includes probes for the *PIWIL1* gene but not for the *MIR886*. Non-significant correlation between methylation and expression was detected between cg13861644, the most significant DMP in the *PIWIL1* gene, and its expression in the microarray. Although non-responders showed lower gene expression of *PIWIL1* (4.5 ± 1.9), in agreement

with the observed hypermethylation, than responders (5.3 ± 0.3), the difference was not significant ($p > 0.05$).

Discussion

To our knowledge, the present study is the first to analyze and integrate differences in DNA methylation and gene expression in association with CBT response in the peripheral blood of

Table 2 Gene Set Enrichment Analysis of Biological Processes from Gene Ontology (GO) Obtained for the Yellowgreen Module. The Table Shows the GO Terms Identified, Their Cluster Distribution According to ClueGO, Their Bonferroni-Corrected p-values and the Associated Genes Found in the Yellowgreen Module

GO ID	GO Term	p-value	Cluster	Associated Genes Found
GO:0019985	Translesion synthesis	0.02	Cluster 0	PCLAF, POLK, RFC4
GO:0033260	Nuclear DNA replication	0.02	Cluster 1	DONSON, RAD51, RFC4
GO:0050927	Positive regulation of positive chemotaxis	0.02	Cluster 2	CASR, CXCL12, CXCL8
GO:0034754	Cellular hormone metabolic process	0.02	Cluster 3	AKR1C4, CRABP2, CYP11B1, PNPLA4, RBPI, STAR
GO:0008207	C21-steroid hormone metabolic process	0.03	Cluster 3	AKR1C4, CYP11B1, STAR
GO:0016101	Diterpenoid metabolic process	0.01	Cluster 3	AKR1C4, CRABP2, PNPLA4, RBPI, SDC4, STAR
GO:2001023	Regulation of response to drug	0.02	Cluster 4	AGXT, CXCL12, HDAC6, KCNA2, TACR2
GO:0051952	Regulation of amine transport	0.02	Cluster 4	AGXT, CXCL12, GRM7, KCNA2, TACR2
GO:0051954	Positive regulation of amine transport	0.02	Cluster 4	AGXT, CXCL12, TACR2
GO:0050433	Regulation of catecholamine secretion	0.02	Cluster 4	AGXT, CXCL12, KCNA2

children and adolescents with early-onset OCD. We identified two genes, *PIWIL1* and *MIR886*, that were enriched in significant CpG sites that showed meaningful differences ($\Delta\beta > \pm 0.2$) in the methylation level between responders and non-responders and also a strong correlation in DNA methylation between the blood and brain. These CpGs showed higher methylation levels in non-responders and were associated with a module of 197 genes that were co-expressed and upregulated in the non-responders. Interestingly, *PIWIL1* and *MIR886* are involved in the tight control of gene expression with non-coding RNAs (ncRNAs). Small ncRNAs have roles in neuronal function, cognition, learning and memory.³³

PIWIL1 encodes a Piwi-like protein that forms an evolutionarily-conserved gene regulatory mechanism together with the Piwi-interacting RNAs (piRNAs), a class of small ncRNAs. Piwi proteins and piRNAs are found primarily within the male germline, where they are necessary for germ cell maintenance and spermatogenesis because they protect the genome by silencing transposon expression at both the epigenetic and post-transcriptional levels.^{34–37} In addition to their role in germline genome defence, there is growing recognition that the Piwi pathway is involved in neuronal development throughout the lifespan and in neuronal gene regulation in the adult brain.^{38–42} Moreover, functional disruption of the Piwi pathway has indicated that it is also involved in learning and memory and in the regulation of behavioral responses to the environment.⁴³ These findings are consistent with the strong association between coding mutations in the Piwi genes in humans and autism.⁴⁴

MIR886 is a Pol III non-coding RNA 886 gene (nc886), which was previously proposed to encode a pre-miR-886 or an RNA component of the vault complex referred to as vtRNA2-1.⁴⁵ However, a later study did not find any evidence that nc886 gives rise to microRNAs or that it associates with the vault complex.⁴⁶ This gene was previously shown to be elevated in Friedreich's ataxia and differentially methylated in Parkinson's disease.^{47–49} nc886 has a CpG island in its upstream region that is maternally imprinted.⁵⁰ Genomic imprinting is the monoallelic expression of a subset of genes in a conserved, parent-of-origin fashion. The frequency of imprinting of the nc886 CpG island in children has been associated with the genetic background and has also been linked to the mother's age and season of conception, indicating that genetic and environmental factors may affect the establishment of imprinting, which is closely associated with human physiology.^{50,51} Changes in gene expression of imprinted sites within the placenta, including of *MIR886*, that

are suggestive of an altered imprinting status have been linked to newborn neurobehavioral outcomes.⁵²

The genes in the yellowgreen module are associated with several biological processes such as DNA replication, chemotaxis, hormone metabolism and catecholamine transport. These results agree with those of one of the two studies using genome-wide expression analysis of CBT response in anxiety disorders, which identified similar GO terms of “DNA transcription and elongation” and “positive regulation of chemotaxis”.¹²

Although correlations between DNA methylation in promoter regions and gene expression have been reported,⁵³ in our study we did not observe this effect. This could be due to the small sample size of our study. However, it could also be related to the complex mechanisms implicated in the epigenetic regulation of gene expression. The hypermethylation observed in the promoter region of *PIWIL1* could not affect the basal expression of this gene but could modify its regulation by transcription factors that participate in the modulatory effects exerted by CBT therapy.

The findings of this study should be interpreted by bearing in mind several important limitations. The sample size limited the statistical power of the study and made it difficult to detect small or modest effects on DNA methylation or gene expression. Given that the study was hypothesis-driven and due to the small sample size, our results should be seen as preliminary and should be considered as exploratory findings that require further confirmation. However, it should be noted that our sample comprised patients with early-onset OCD. Thus, the sample represented a homogeneous clinical population who had not been previously treated and who were at the initial stages of the illness. Moreover, several potential confounders were controlled for, such as age, smoking status, pharmacological treatment and the course of the disease. We also controlled for blood cell composition, as DNA methylation is cell type-specific and different cell compositions between samples could affect the methylation data obtained.

In conclusion and despite the study limitations, our results provide evidence that the epigenetic regulation of ncRNAs could be a predictor of CBT response and might be related to differences in the expression of genes involved in biological processes associated with CBT response. Our results have to be replicated in large samples before using the methylation level of these specific genes as predictive biomarkers with clinical application.

Data Sharing Statement

The data that support the findings of this study are available from the corresponding author upon reasonable request.

Role of Funding Sources

Funding sources had no further role in study design; in the collection, analysis and interpretation of data; in the writing of the report; and in the decision to submit the paper for publication.

Acknowledgments

This work was supported by the Alicia Koplowitz Foundation; Ministerio de Economía y Competitividad-Instituto de Salud Carlos III- Fondo Europeo de Desarrollo Regional (FEDER)-Unión Europea (PI16/01086, PI19/01122). Support was also given by the CERCA Programme/the Government of Catalonia, Secretaria d'Universitats i Recerca del Departament d'Economia i Coneixement to the "Child Psychiatry and Psychology Group" (2017SGR881) and to the "Clinical Pharmacology and Pharmacogenetics Group" (2017SGR1562). The authors thank the Language Advisory Service at the University of Barcelona for manuscript revision. The authors also thank all subjects and their families for the time and effort spent on this study.

Author Contributions

All authors made a significant contribution to the work reported, whether that is in the conception, study design, execution, acquisition of data, analysis and interpretation, or in all these areas; took part in drafting, revising or critically reviewing the article; gave final approval of the version to be published; have agreed on the journal to which the article has been submitted; and agree to be accountable for all aspects of the work.

Disclosure

The authors declare no conflicts of interest for this work.

References

- Heyman I, Fombonne E, Simmons H, et al. Prevalence of obsessive-compulsive disorder in the British nationwide survey of child mental health. *Br J Psychiatry*. 2001;179(4):324–329. doi:10.1192/bjp.179.4.324
- Piacentini J, Bergman RL, Keller M, McCracken J. Functional impairment in children and adolescents with obsessive-compulsive disorder. *J Child Adolesc Psychopharmacol*. 2003;13(Suppl 1):S61–S69. doi:10.1089/104454603322126359
- Stewart SE, Geller DA, Jenike M, et al. Long-term outcome of pediatric obsessive-compulsive disorder: a meta-analysis and qualitative review of the literature. *Acta Psychiatr Scand*. 2004;110(1):4–13. doi:10.1111/j.1600-0447.2004.00302.x
- Uhre CF, Uhre VF, Lønfeldt NN, et al. Systematic Review and Meta-Analysis: cognitive-Behavioral Therapy for Obsessive-Compulsive Disorder in Children and Adolescents. *J Am Acad Child Adolesc Psychiatry*. 2020;59(1):64–77. doi:10.1016/j.jaac.2019.08.480
- de Haan E. Effective treatment Of OCD? *J Am Acad Child Adolesc Psychiatry*. 2006;45(4):383. doi:10.1097/01.chi.0000205697.73873.c1
- March J, Silva S, Petrycki S, et al. Fluoxetine, cognitive-behavioral therapy, and their combination for adolescents with depression: treatment for Adolescents With Depression Study (TADS) randomized controlled trial. *JAMA*. 2004;292(7):807–820.
- Geller DA, March J, American Academy of Child and Adolescent Psychiatry (AACAP). Practice parameter for the assessment and treatment of children and adolescents with obsessive-compulsive disorder. *J Am Acad Child Adolesc Psychiatry*. 2012;51(1):98–113. doi:10.1016/j.jaac.2011.09.019
- National Institute for Health and Clinical Excellence (NICE). *Obsessive-Compulsive Disorder: Core Interventions in the Treatment of Obsessive-Compulsive Disorder and Body Dysmorphic Disorder*. London: NICE; 2005.
- Turner C, O'Gorman B, Nair A, O'Kearney R. Moderators and predictors of response to cognitive behaviour therapy for pediatric obsessive-compulsive disorder: a systematic review. *Psychiatry Res*. 2018;261:50–60. doi:10.1016/j.psychres.2017.12.034
- Lester KJ, Eley TC. Therapygenetics: using genetic markers to predict response to psychological treatment for mood and anxiety disorders. *Biol Mood Anxiety Disord*. 2013;3(1):4. doi:10.1186/2045-5380-3-4
- Lester KJ, Roberts S, Keers R, et al. Non-replication of the association between 5HTTLPR and response to psychological therapy for child anxiety disorders. *Br J Psychiatry*. 2016;208(2):182–188. doi:10.1192/bjp.bp.114.154997
- Coleman JR, Lester KJ, Roberts S, et al. Separate and combined effects of genetic variants and pre-treatment whole blood gene expression on response to exposure-based cognitive behavioural therapy for anxiety disorders. *World J Biol Psychiatry*. 2017;18(3):215–226. doi:10.1080/15622975.2016.1208841
- Rayner C, Coleman JRI, Purves KL, et al. A genome-wide association meta-analysis of prognostic outcomes following cognitive behavioural therapy in individuals with anxiety and depressive disorders. *Transl Psychiatry*. 2019;9(1):150. doi:10.1038/s41398-019-0481-y
- Perroud N, Salzmann A, Prada P, et al. Response to psychotherapy in borderline personality disorder and methylation status of the BDNF gene. *Transl Psychiatry*. 2013;3(1):e207. doi:10.1038/tp.2012.140
- Roberts S, Lester KJ, Hudson JL, et al. Serotonin transporter methylation and response to cognitive behaviour therapy in children with anxiety disorders. *Transl Psychiatry*. 2014;4(9):e444. doi:10.1038/tp.2014.83
- Ziegler C, Richter J, Mahr M, et al. MAOA gene hypomethylation in panic disorder-reversibility of an epigenetic risk pattern by psychotherapy. *Transl Psychiatry*. 2016;6(4):e773. doi:10.1038/tp.2016.41
- Schiele MA, Thiel C, Deckert J, Zaudig M, Berberich G, Domschke K. Monoamine Oxidase A Hypomethylation in Obsessive-Compulsive Disorder: reversibility By Successful Psychotherapy? *Int J Neuropsychopharmacol*. 2020;23(5):319–323. doi:10.1093/ijnp/pyaa016
- Roberts S, Keers R, Breen G, et al. DNA methylation of FKBP5 and response to exposure-based psychological therapy. *Am J Med Genet B Neuropsychiatr Genet*. 2019;180(2):150–158. doi:10.1002/ajmg.b.32650

19. Schiele MA, Thiel C, Kollert L, et al. Oxytocin Receptor Gene DNA Methylation: a Biomarker of Treatment Response in Obsessive-Compulsive Disorder? *Psychother Psychosom.* 2020;1–7. doi:10.1159/000509910
20. Schiele MA, Thiel C, Weidner M, et al. Serotonin transporter gene promoter hypomethylation in obsessive-compulsive disorder - Predictor of impaired response to exposure treatment? *J Psychiatr Res.* 2020;132:18–22. doi:10.1016/j.jpsychires.2020.09.034
21. Schiele MA, Ziegler C, Kollert L, et al. Plasticity of Functional MAOA Gene Methylation in Acrophobia. *Int J Neuropsychopharmacol.* 2018;21(9):822–827. doi:10.1093/ijnp/pyy050
22. Levy-Gigi E, Szabó C, Kelemen O, Kéri S. Association among clinical response, hippocampal volume, and FKBP5 gene expression in individuals with posttraumatic stress disorder receiving cognitive behavioral therapy. *Biol Psychiatry.* 2013;74(11):793–800. doi:10.1016/j.biopsych.2013.05.017
23. Szabó C, Kelemen O, Kéri S. Changes in FKBP5 expression and memory functions during cognitive-behavioral therapy in posttraumatic stress disorder: a preliminary study. *Neurosci Lett.* 2014;569:116–120. doi:10.1016/j.neulet.2014.03.059
24. Roberts S, Wong CCY, Breen G, et al. Genome-wide expression and response to exposure-based psychological therapy for anxiety disorders. *Transl Psychiatry.* 2017;7(8):e1219. doi:10.1038/tp.2017.177
25. American Psychiatric Association. *Diagnostic and Statistical Manual of Mental Disorders. Fifth ed.* Arlington, VA: American Psychiatric Association; 2013.
26. Scahill L, Riddle MA, McSwiggin-Hardin M, et al. Children's Yale-Brown Obsessive Compulsive Scale: reliability and validity. *J Am Acad Child Adolesc Psychiatry.* 1997;36(6):844–852. doi:10.1097/00004583-199706000-00023
27. Mataix-Cols D, de la Cruz LF, Nordsletten AE, Lenhard F, Isomura K, Simpson HB. Towards an international expert consensus for defining treatment response, remission, recovery and relapse in obsessive-compulsive disorder. *World Psychiatry.* 2013;15(1):80–81. doi:10.1002/wps.20299
28. Tian Y, Morris TJ, Webster AP, et al. ChAMP: updated methylation analysis pipeline for Illumina BeadChips. *Bioinformatics.* 2017;33(24):3982–3984. doi:10.1093/bioinformatics/btx513
29. Alonso R, Salavert F, Garcia-Garcia F, et al. Babelomics 5.0: functional interpretation for new generations of genomic data. *Nucleic Acids Res.* 2015;43(W1):W117–121. doi:10.1093/nar/gkv384
30. Langfelder P, Horvath S. WGCNA: an R package for weighted correlation network analysis. *BMC Bioinform.* 2008;9(1):559. doi:10.1186/1471-2105-9-559
31. Bindea G, Mlecnik B, Hackl H, et al. ClueGO: a Cytoscape plug-in to decipher functionally grouped gene ontology and pathway annotation networks. *Bioinformatics.* 2009;25(8):1091–1093. doi:10.1093/bioinformatics/btp101
32. Hannon E, Lunnon K, Schalkwyk L, Mill J. Interindividual methylomic variation across blood, cortex, and cerebellum: implications for epigenetic studies of neurological and neuropsychiatric phenotypes. *Epigenetics.* 2015;10(11):1024–1032. doi:10.1080/15592294.2015.1100786
33. Fiorenza A, Barco A. Role of Dicer and the miRNA system in neuronal plasticity and brain function. *Neurobiol Learn Mem.* 2016;135:3–12. doi:10.1016/j.nlm.2016.05.001
34. Deng W, Lin H. miwi, a murine homolog of piwi, encodes a cytoplasmic protein essential for spermatogenesis. *Dev Cell.* 2002;2(6):819–830. doi:10.1016/S1534-5807(02)00165-X
35. Kuramochi-Miyagawa S, Kimura T, Ijiri TW, et al. Mili, a mammalian member of piwi family gene, is essential for spermatogenesis. *Development.* 2004;131(4):839–849. doi:10.1242/dev.00973
36. Carmell MA, Girard A, van de Kant HJ, et al. MIWI2 is essential for spermatogenesis and repression of transposons in the mouse male germline. *Dev Cell.* 2007;12(4):503–514. doi:10.1016/j.devcel.2007.03.001
37. Iwasaki YW, Siomi MC, Siomi H. PIWI-Interacting RNA: its Biogenesis and Functions. *Annu Rev Biochem.* 2015;84:405–433.
38. Zhao PP, Yao MJ, Chang SY, et al. Novel function of PIWIL1 in neuronal polarization and migration via regulation of microtubule-associated proteins. *Mol Brain.* 2015;8:39. doi:10.1186/s13041-015-0131-0
39. Ponnusamy M, Yan KW, Liu CY, Li PF, Wang K. PIWI family emerging as a decisive factor of cell fate: an overview. *Eur J Cell Biol.* 2017;96(8):746–757. doi:10.1016/j.ejcb.2017.09.004
40. Lee KS, Park JL, Lee K, et al. nc886, a non-coding RNA of anti-proliferative role, is suppressed by CpG DNA methylation in human gastric cancer. *Oncotarget.* 2014;5(11):3944–3955. doi:10.18632/oncotarget.2047
41. Nandi S, Chandramohan D, Fioriti L, et al. Roles for small noncoding RNAs in silencing of retrotransposons in the mammalian brain. *Proc Natl Acad Sci U S A.* 2016;113(45):12697–12702. doi:10.1073/pnas.1609287113
42. Leighton LJ, Zhao Q, Li X, et al. A Functional Role for the Epigenetic Regulator ING1 in Activity-induced Gene Expression in Primary Cortical Neurons. *Neuroscience.* 2018;369:248–260. doi:10.1016/j.neuroscience.2017.11.018
43. Leighton LJ, Wei W, Marshall PR, et al. Disrupting the hippocampal Piwi pathway enhances contextual fear memory in mice. *Neurobiol Learn Mem.* 2019;161:202–209. doi:10.1016/j.nlm.2019.04.002
44. Iossifov I, O'Roak BJ, Sanders SJ, et al. The contribution of de novo coding mutations to autism spectrum disorder. *Nature.* 2014;515(7526):216–221. doi:10.1038/nature13908
45. Landgraf P, Rusu M, Sheridan R, et al. A mammalian microRNA expression atlas based on small RNA library sequencing. *Cell.* 2007;129(7):1401–1414. doi:10.1016/j.cell.2007.04.040
46. Lee EJ, Banerjee S, Zhou H, et al. Identification of piRNAs in the central nervous system. *RNA.* 2011;17(6):1090–1099. doi:10.1261/rna.2565011
47. Mahishi LH, Hart RP, Lynch DR, Ratan RR. miR-886-3p levels are elevated in Friedreich ataxia. *J Neurosci.* 2012;32(27):9369–9373. doi:10.1523/JNEUROSCI.0059-12.2012
48. Masliah E, Dumaop W, Galasko D, Desplats P. Distinctive patterns of DNA methylation associated with Parkinson disease: identification of concordant epigenetic changes in brain and peripheral blood leukocytes. *Epigenetics.* 2013;8(10):1030–1038. doi:10.4161/epi.25865
49. Kaut O, Schmitt I, Tost J, et al. Epigenome-wide DNA methylation analysis in siblings and monozygotic twins discordant for sporadic Parkinson's disease revealed different epigenetic patterns in peripheral blood mononuclear cells. *Neurogenetics.* 2017;18(1):7–22. doi:10.1007/s10048-016-0497-x
50. Silver MJ, Kessler NJ, Hennig BJ, et al. Independent genomewide screens identify the tumor suppressor VTRNA2-1 as a human epiallele responsive to periconceptional environment. *Genome Biol.* 2015;16(1):118. doi:10.1186/s13059-015-0660-y
51. Carpenter BL, Zhou W, Madaj Z, et al. Mother-child transmission of epigenetic information by tunable polymorphic imprinting. *Proc Natl Acad Sci U S A.* 2018;115(51):E11970–E11977. doi:10.1073/pnas.1815005115
52. Green BB, Kappil M, Lambertini L, et al. Expression of imprinted genes in placenta is associated with infant neurobehavioral development. *Epigenetics.* 2015;10(9):834–841. doi:10.1080/15592294.2015.1073880
53. Chen C, Zhang C, Cheng L, et al. Correlation between DNA methylation and gene expression in the brains of patients with bipolar disorder and schizophrenia. *Bipolar Disord.* 2014;16(8):790–799. doi:10.1111/bdi.12255

Pharmacogenomics and Personalized Medicine

Dovepress

Publish your work in this journal

Pharmacogenomics and Personalized Medicine is an international, peer-reviewed, open access journal characterizing the influence of genotype on pharmacology leading to the development of personalized treatment programs and individualized drug selection for improved safety, efficacy and sustainability. This journal is indexed

on the American Chemical Society's Chemical Abstracts Service (CAS). The manuscript management system is completely online and includes a very quick and fair peer-review system, which is all easy to use. Visit <http://www.dovepress.com/testimonials.php> to read real quotes from published authors.

Submit your manuscript here: <https://www.dovepress.com/pharmacogenomics-and-personalized-medicine-journal>