



FOUNDED BY BRIGHAM AND WOMEN'S HOSPITAL
AND MASSACHUSETTS GENERAL HOSPITAL

Partners HealthCare Energy Sustainability & Resiliency Initiatives

Dennis Villanueva
Manager, Energy & Sustainability

Partners Sustainable Initiatives - Goals

To support Partners Healthcare System in becoming a leader for promoting a **healthy environment**, optimizing the **care of our patients** and the **well-being of our employees** while **conserving resources**

Partners cannot be viewed as contributing to the health problems manifested in the patients we are treating.



Leaner Energy



Energy price
fluctuation



20 M
in additional
energy costs due
to fluctuations in
energy prices in
2008/2009



Accounted for
12%
of operating
income in
FY2009



10-year Strategic
Energy Master Plan

1



Reduce energy
consumption through
conservation

2



Convert to on-site
energy production

3



Move to renewable
energy sources

%

Cost savings &
stability



273

energy conservation
projects identified

\$20 M
in returns



35%

of power from
renewables



5 IN 13

hospitals have
cogeneration



25%

energy reduction
goal achieved

New goal to
reduce by

40%



Major capital
projects improving
energy efficiency
and operating costs



MGH 500 kW



Assembly Row 1,250 kW

Solar Installations



Spaulding Rehab Cape Cod 1,100 kW



Newton_Wellesley Hospital 1,340 kW

PARTNERS
HEALTHCARE

FOUNDED BY BRIGHAM AND WOMEN'S HOSPITAL
AND MASSACHUSETTS GENERAL HOSPITAL

Antrim Wind Power – 28,800 kW



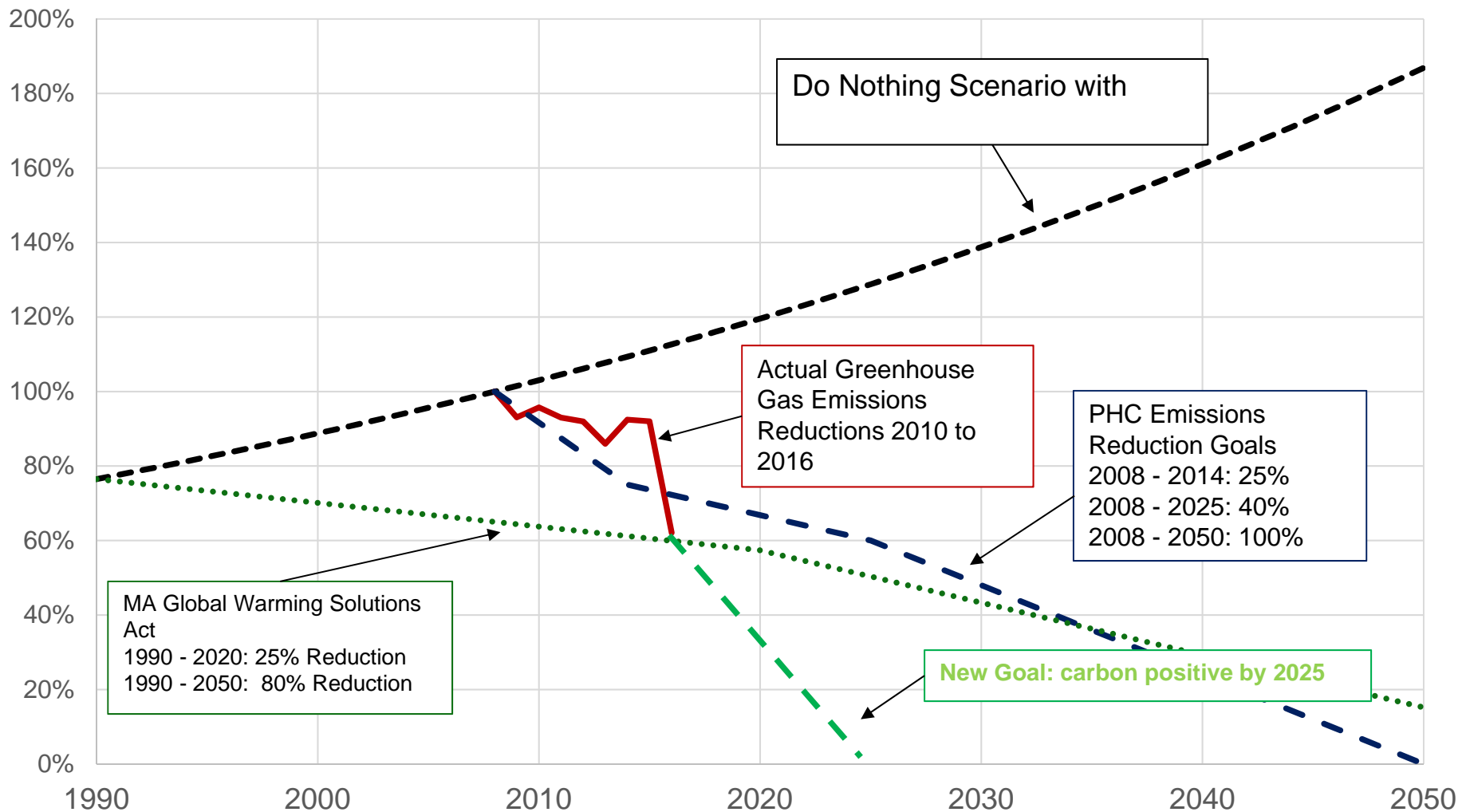
Results

Site	Renewable Energy Type	Commercial Operation Date	Commercial Model	Nameplate Capacity (kW)	Annual Output (kWh)	% of Partners Load
Partners -Antrim Energy	Wind	June 2019	Power and RECs	28,800	70,000,000	19.7%
Massachusetts General Hospital	Solar -On site	Dec 2016	NMC and RECs	475	570,000	0.16%
Assembly Row	Solar -On site	April 2017	NMC	1,250	1,471,618	0.41%
Spaulding Cape	Solar -On site	June 2017	NMC and RECs	1,160	1,392,000	0.39%
Newton-Wellesley Hospital	Solar -On site	Dec 2017	NMC and RECs	1,288	1,545,600	0.44%
Cooley Dickinson Hospital	Solar -Off Site	May 2017	NMC and RECs	3,240	1,862,102	0.52%
Total				36,213	76,841,320	21.65%

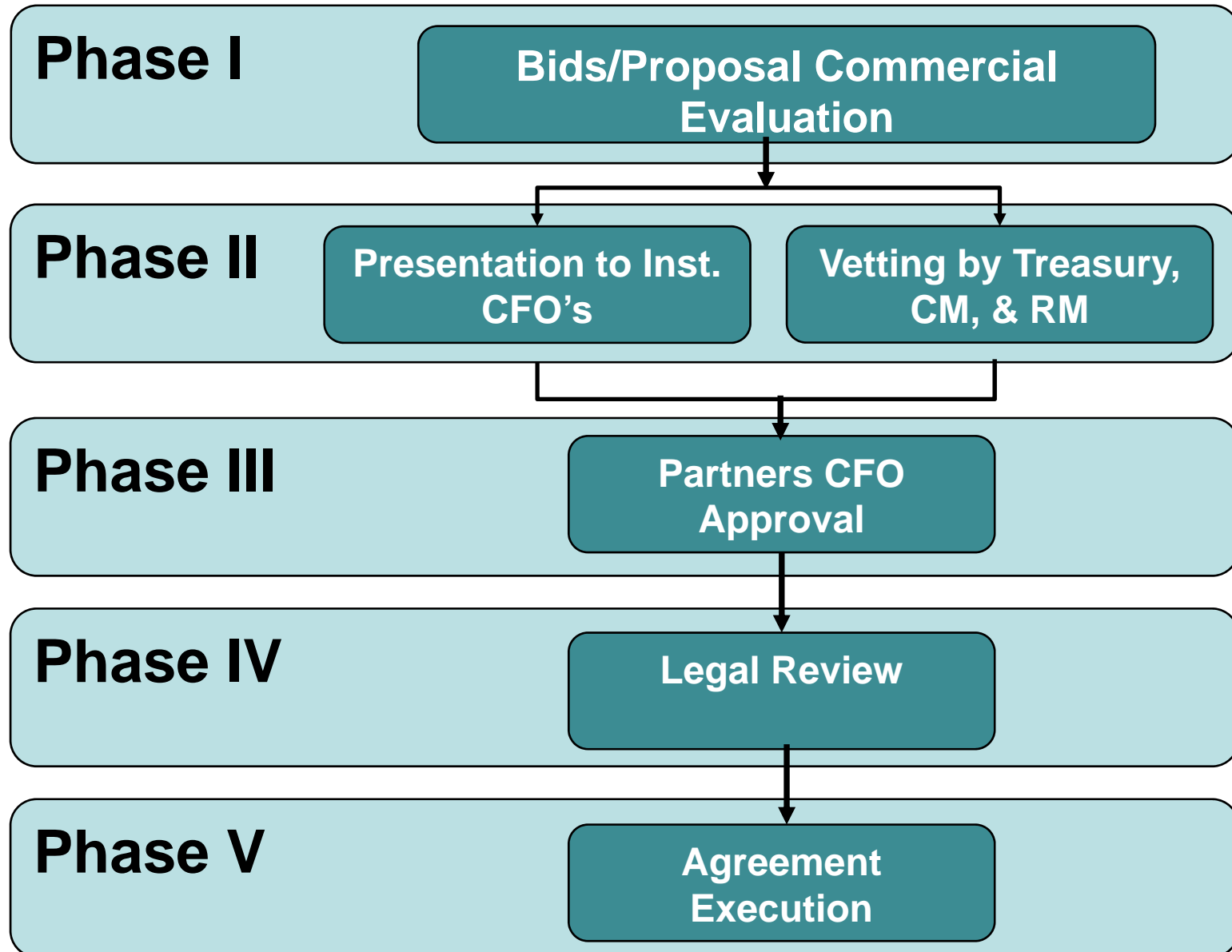
- Enabled over \$80M in renewable energy installations
- About 40% GHG emissions reduction since 2010, and about 65% since 2000

Path to Energy and Greenhouse Gas Targets

Percent Reduction of Carbon Dioxide Emissions Compared to 2008 Baseline



Executive Approval Process



Questions?

